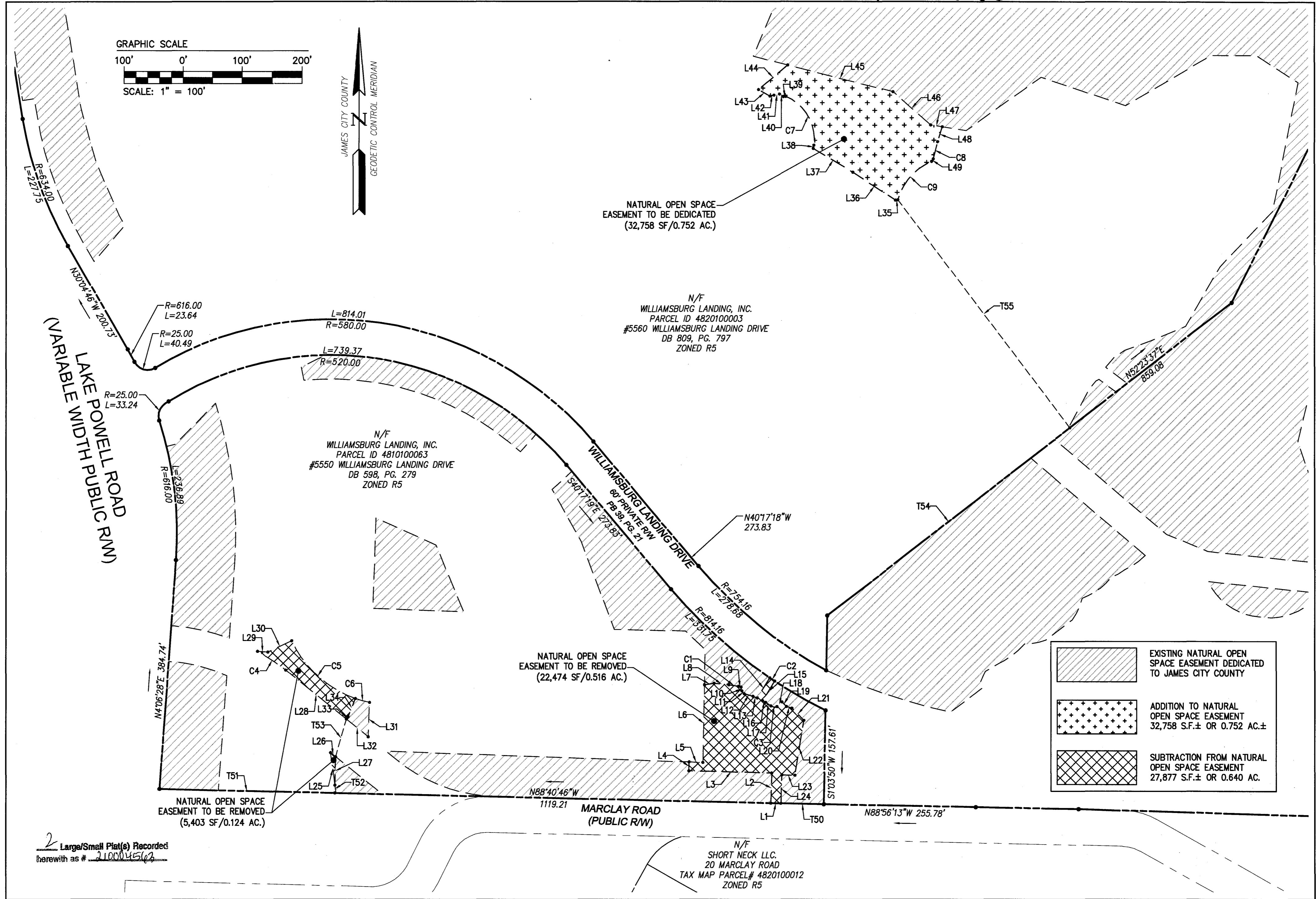
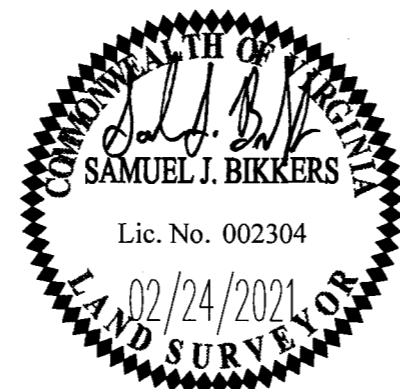


210004563



2 Large/Small Plat(s) Recorded
herewith as # 210004563

City of Williamsburg & County of James City		
Circuit Court: This PLAT was recorded on		
March 10, 2021		
at 1:51 AM/PM	PB	PG
Document #	210004563	
MONA A. FOLEY, CLERK		
Mona A. Foley, Clerk		
Rev.	Date	Description



AES
CONSULTING ENGINEERS

5248 Olde Towne Road, Suite 1
Williamsburg, Virginia 23188
Phone: (757) 253-0040
www.aesva.com

Hampton Roads | Central Virginia | Middle Peninsula

JCC NATURAL OPEN SPACE
EASEMENT ADJUSTMENTS

FROM: WILLIAMSBURG LANDING, INC.
TO: JAMES CITY COUNTY

JAMES CITY DISTRICT COUNTY OF JAMES CITY VIRGINIA

Project Contacts:	SJB/TRS
Project Number:	8162-38
Scale:	1"=100'
Date:	11/23/2020
Sheet Number	2 OF 2