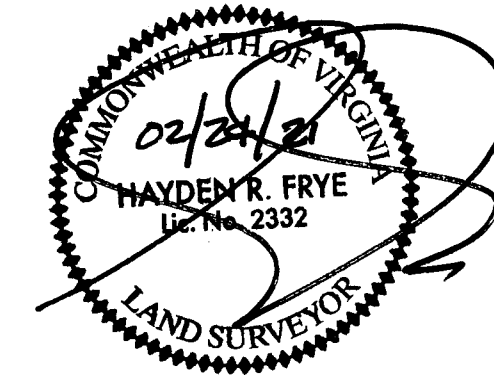
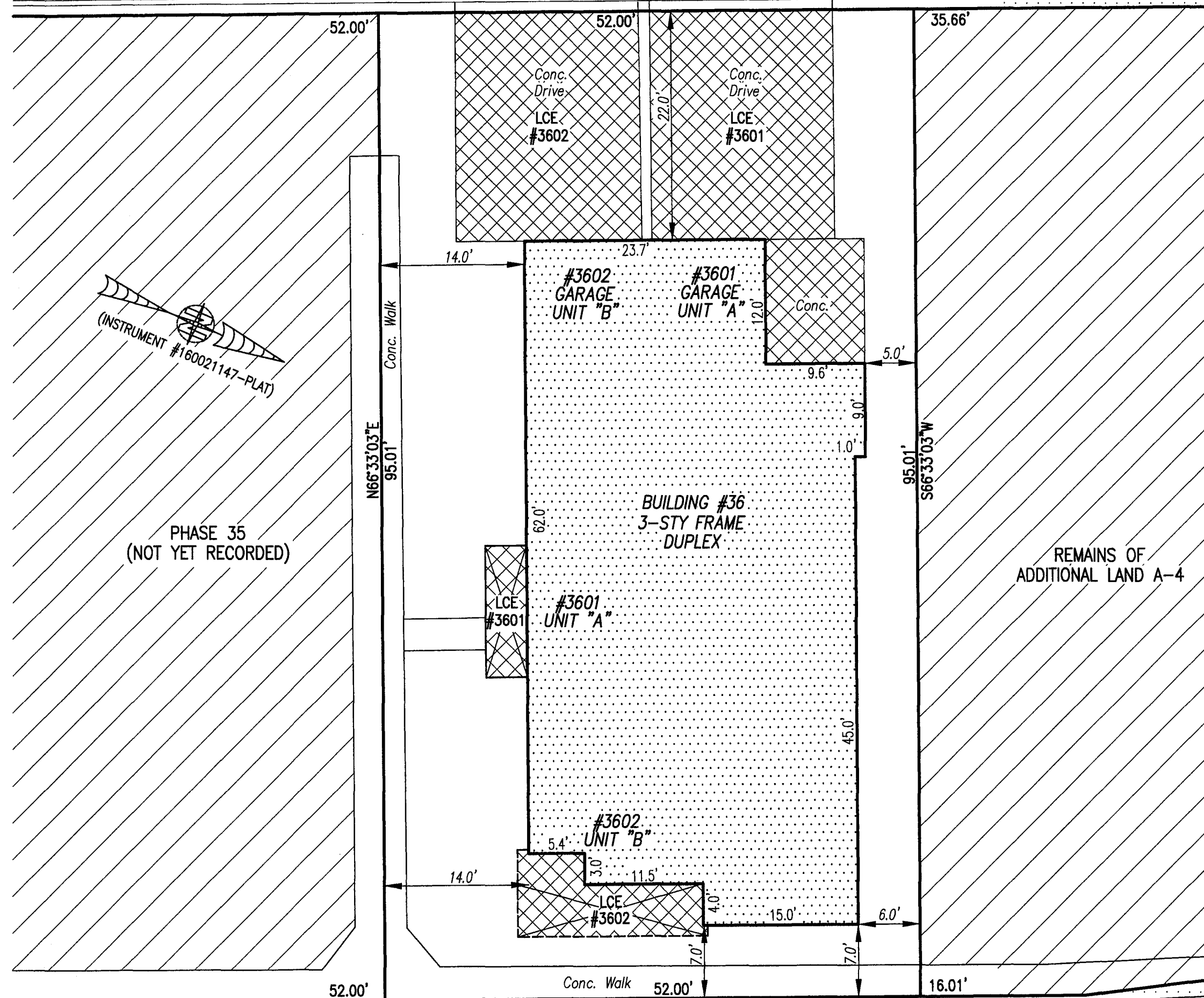


210004049

I HEREBY CERTIFY THAT THIS PLAT IS ACCURATE AND THAT IT COMPLIES WITH THE PROVISIONS OF THE CODE OF VIRGINIA OF 1950 AS AMENDED, § 55.1-1920A & B AND I FURTHER CERTIFY THAT ALL IMPROVEMENTS THEREOF DEPICTED HEREON, PURSUANT TO THE CODE OF VIRGINIA § 55.1-1920A, ARE SUBSTANTIALLY COMPLETE.



DEARBORN (PRIVATE) ROAD
(PHASE 1 INSTR. #170011679)
(FORMERLY ALLEY "C")
(PREVIOUSLY SUBMITTED LAND)
Asphalt
N23°26'57"W 317.18'(O/A)



- INDICATES PREVIOUSLY SUBMITTED LAND
- INDICATES BUILDING AREA (SEE PLANS FOR UNIT DIMENSIONS)
- INDICATES LIMITED COMMON ELEMENT (LCE) ASSIGNED TO A UNIT # UNIT ASSIGNED
- INDICATES COMMON ELEMENT (EXCLUDING AREAS OUTSIDE SUBMITTED LAND)
- INDICATES ADDITIONAL LAND

5 Large Small Plat(s) Recorded
herewith as # 210004049

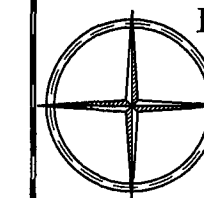
City of Williamsburg & County of James City
Circuit Court: This PLAT was recorded on
March 3, 2021
at 2:13 AM PM PB PG
Document # 210004049
MONA A. FOLEY, CLERK
Mona A. Foley, Clerk

THIS SHEET: BUILDING DETAIL

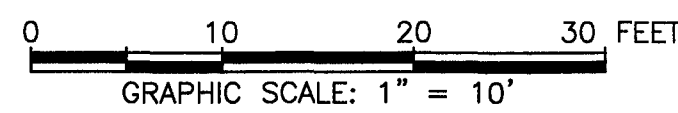
PHASE 36
CONDOMINIUM PLAT AND PLAN
OF
THE PROMENADE
AT
JOHN TYLER
A CONDOMINIUM
JAMES CITY COUNTY, VIRGINIA

Jo# 160921

Hayden Frye and Associates, Inc.
Land Surveyors



DATE: FEBRUARY 17, 2021
333 KELLAM ROAD, SUITE 200
VIRGINIA BEACH, VA, 23462
PH: (757) 491-7228 FX: (757) 491-7229
SCALE: 1"=10'
SHEET 3 OF 5 THIS PHASE



QUEEN'S (PRIVATE) PATH
(PHASE 1 INSTR. #170011679)
(PREVIOUSLY SUBMITTED LAND)
Asphalt
S23°26'49"E 310.88'(O/A)