

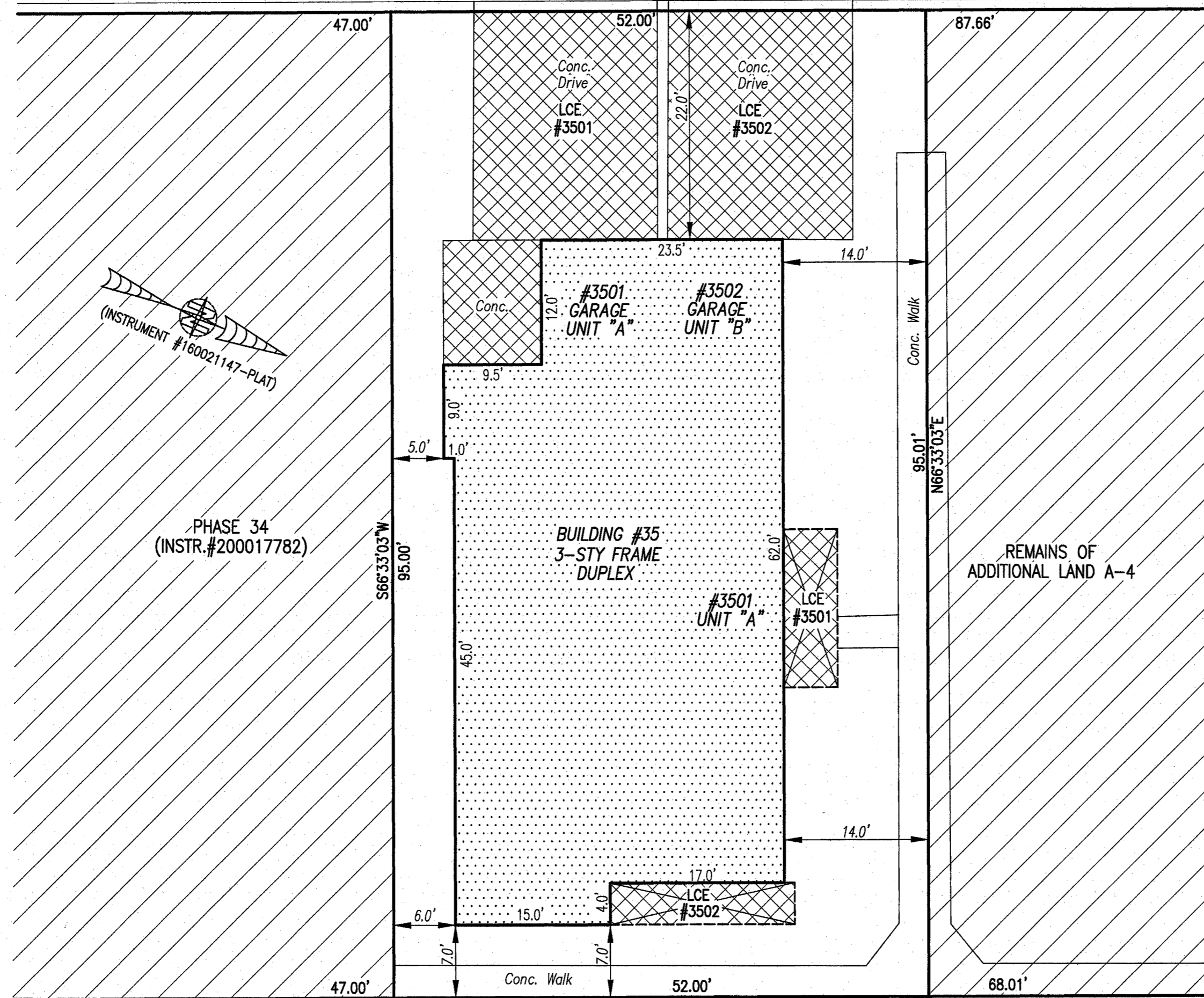
210004048

I HEREBY CERTIFY THAT THIS PLAT IS ACCURATE AND THAT IT COMPLIES WITH THE PROVISIONS OF THE CODE OF VIRGINIA OF 1950 AS AMENDED, § 55.1-1920A & B AND I FURTHER CERTIFY THAT ALL IMPROVEMENTS THEREOF DEPICTED HEREON, PURSUANT TO THE CODE OF VIRGINIA § 55.1-1920A, ARE SUBSTANTIALLY COMPLETE.



DEARBORN (PRIVATE) ROAD

(PHASE 1 INSTR.#170011679)
(FORMERLY ALLEY "C")
(PREVIOUSLY SUBMITTED LAND)
Asphalt
N23°26'57"W 317.18'(O/A)



- INDICATES PREVIOUSLY SUBMITTED LAND
- INDICATES BUILDING AREA (SEE PLANS FOR UNIT DIMENSIONS)
- INDICATES LIMITED COMMON ELEMENT (LCE) ASSIGNED TO A UNIT # UNIT ASSIGNED
- INDICATES COMMON ELEMENT (EXCLUDING AREAS OUTSIDE SUBMITTED LAND)
- INDICATES ADDITIONAL LAND

5 Large/Small Plat(s) Recorded
herewith as # 210004048

City of Williamsburg & County of James City
Circuit Court: This PLAT was recorded on
March 3, 2021
at 2:13 AM (PM) PB PG
Document # 210004048
MONA A. FOLEY, CLERK
Mona A. Foley, Clerk

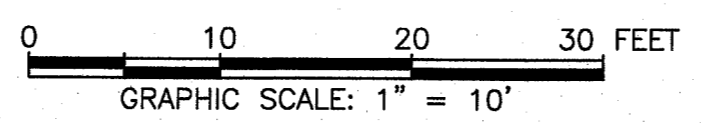
THIS SHEET: BUILDING DETAIL

PHASE 35
CONDOMINIUM PLAT AND PLAN
OF
THE PROMENADE
AT
JOHN TYLER
A CONDOMINIUM
JAMES CITY COUNTY, VIRGINIA

Jo# 160921

Hayden Frye and Associates, Inc.
Land Surveyors
333 KELLAM ROAD, SUITE 200
VIRGINIA BEACH, VA., 23462
PH: (757) 491-7228 FX:(757) 491-7229

DATE: FEBRUARY 16, 2021
SCALE: 1"=10'
SHEET 3 OF 5 THIS PHASE



S23°26'49"E 310.88'(O/A)
Asphalt
QUEEN'S (PRIVATE) PATH
(PHASE 1 INSTR.#170011679)
(PREVIOUSLY SUBMITTED LAND)