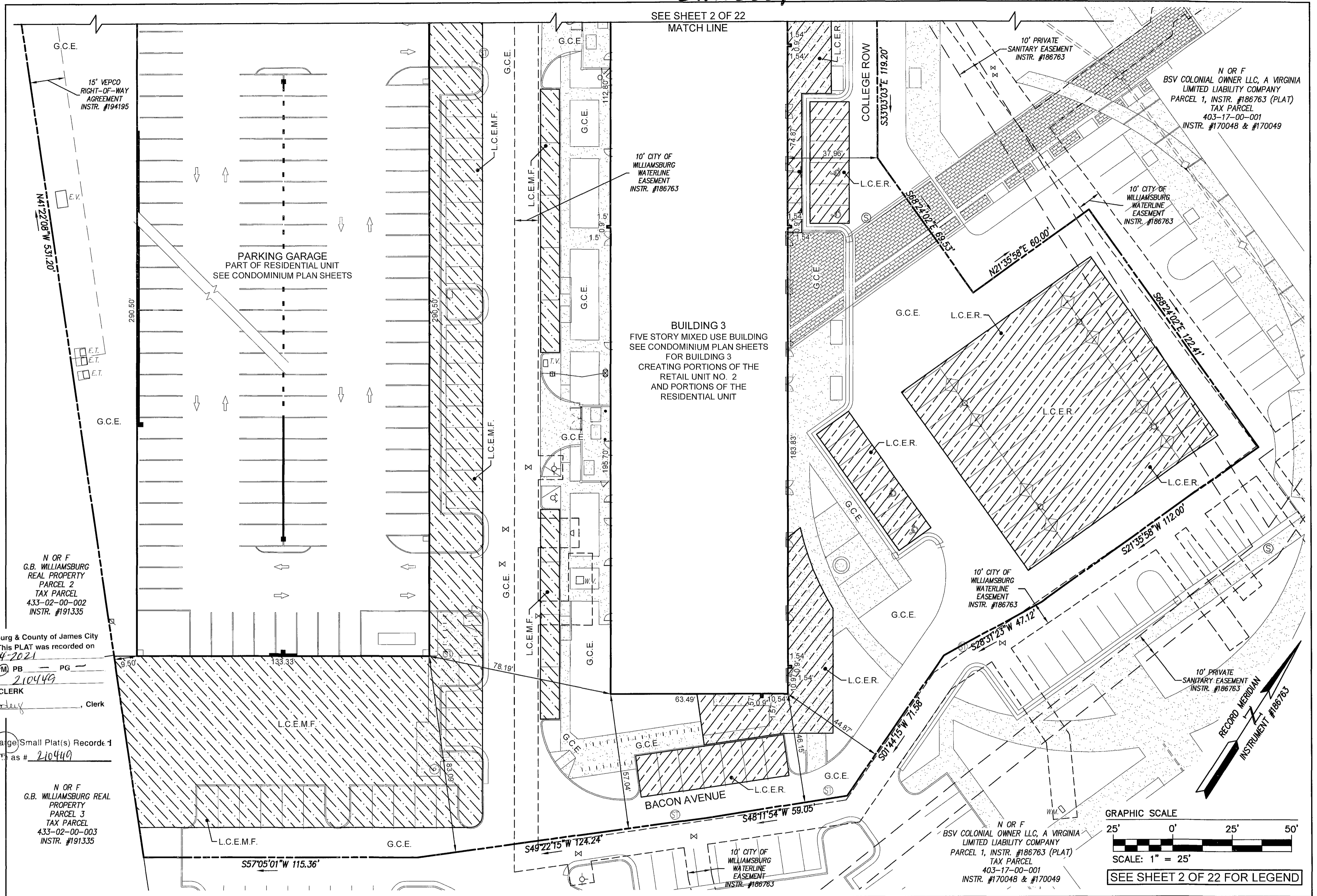


210002257

210449



City of Williamsburg & County of James City
 Circuit Court: This PLAT was recorded on
 2-4-2021
 1:41 AM/PM PB PG
 Document # 210449
 MONA A. FOLEY, CLERK
 Clerk

22 Large/Small Plat(s) Recorded
 herewith as # 210449

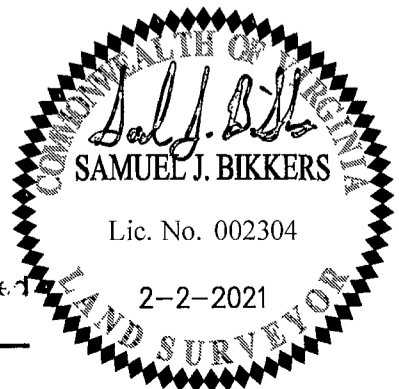
N OR F
 G.B. WILLIAMSBURG REAL
 PROPERTY
 PARCEL 3
 TAX PARCEL
 433-02-00-003
 INSTR. #191335

SURVEYOR'S CERTIFICATE
 I, SAMUEL J. BIKKERS, A DULY LICENSED LAND SURVEYOR IN THE COMMONWEALTH OF VIRGINIA, DO HEREBY CERTIFY THAT THIS PLAT IS ACCURATE AND COMPLIES WITH SECTION 55.1-1920(A) OF THE VIRGINIA CONDOMINIUM ACT AS AMENDED, AND THAT ALL UNITS OR PORTIONS OF SUCH UNITS SHOWN HEREON ARE SUBSTANTIALLY COMPLETE.

Samuel J. Bickers
 SAMUEL J. BIKKERS, L.S. #002304

2-2-2021
 DATE

22 Large/Small Plat(s) Recorded
 herewith as # 210002257



City of Williamsburg & County of James City
 Circuit Court: This PLAT was recorded on
 2-4-2021
 at 1:55 AM/PM PB PG
 Document # 210002257
 MONA A. FOLEY, CLERK
 Clerk

ad. Suite 1
 23188
 0
 insula

EXHIBIT C-1
 CONDOMINIUM PLATS SHOWING
 SUBMITTED LAND, IMPROVEMENTS AND EXISTING EASEMENTS
MIDTOWN ROW COMMERCIAL CONDOMINIUM
 CITY OF WILLIAMSBURG VIRGINIA

Project Contacts: SJB / CMA
 Project Number: W09042-12
 Scale: 1" = 25'
 Date: 02-02-2021
 Sheet Number
3 OF 22

GRAPHIC SCALE
 25' 0' 25' 50'
 SCALE: 1" = 25'
 SEE SHEET 2 OF 22 FOR LEGEND