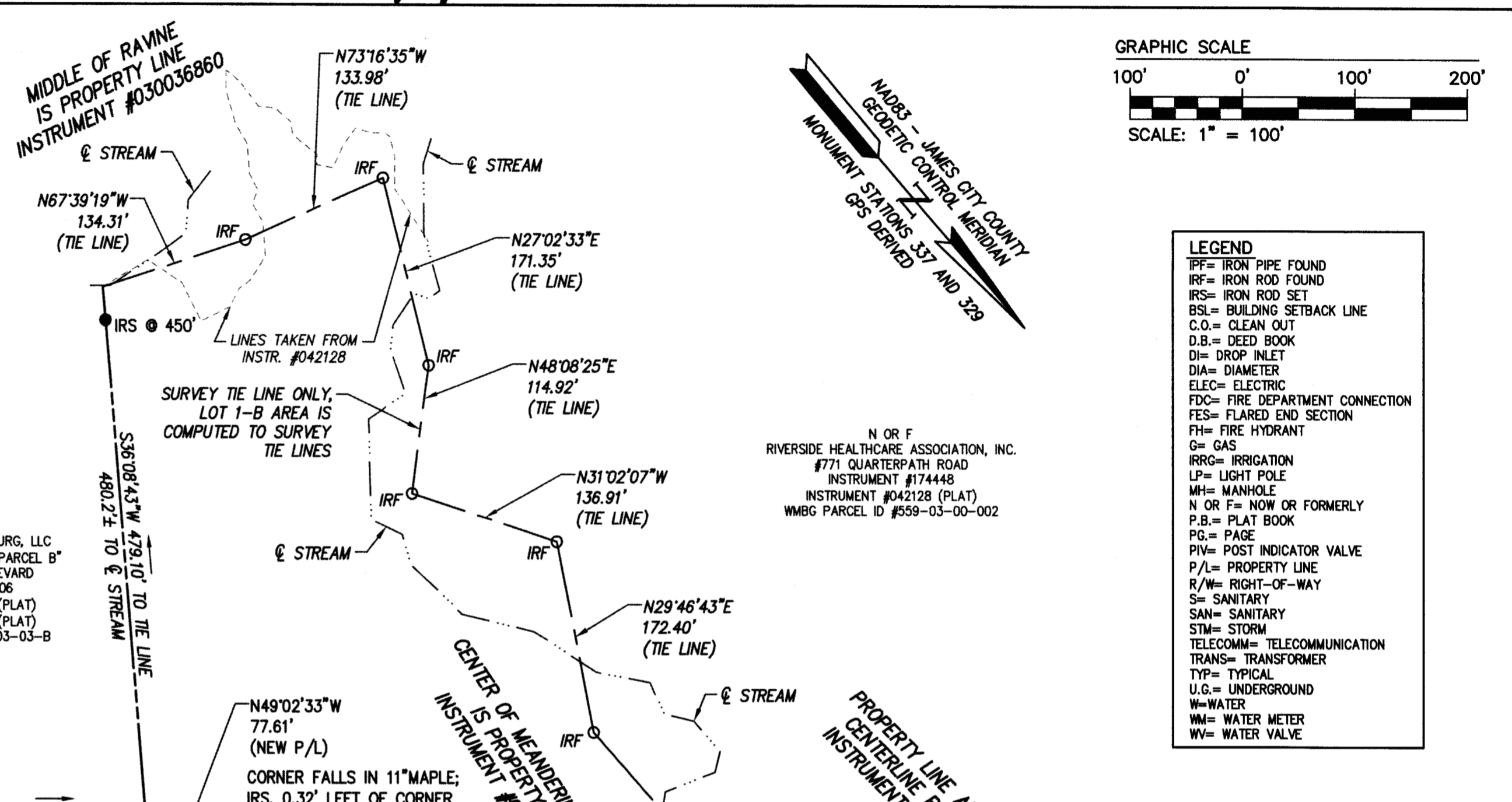
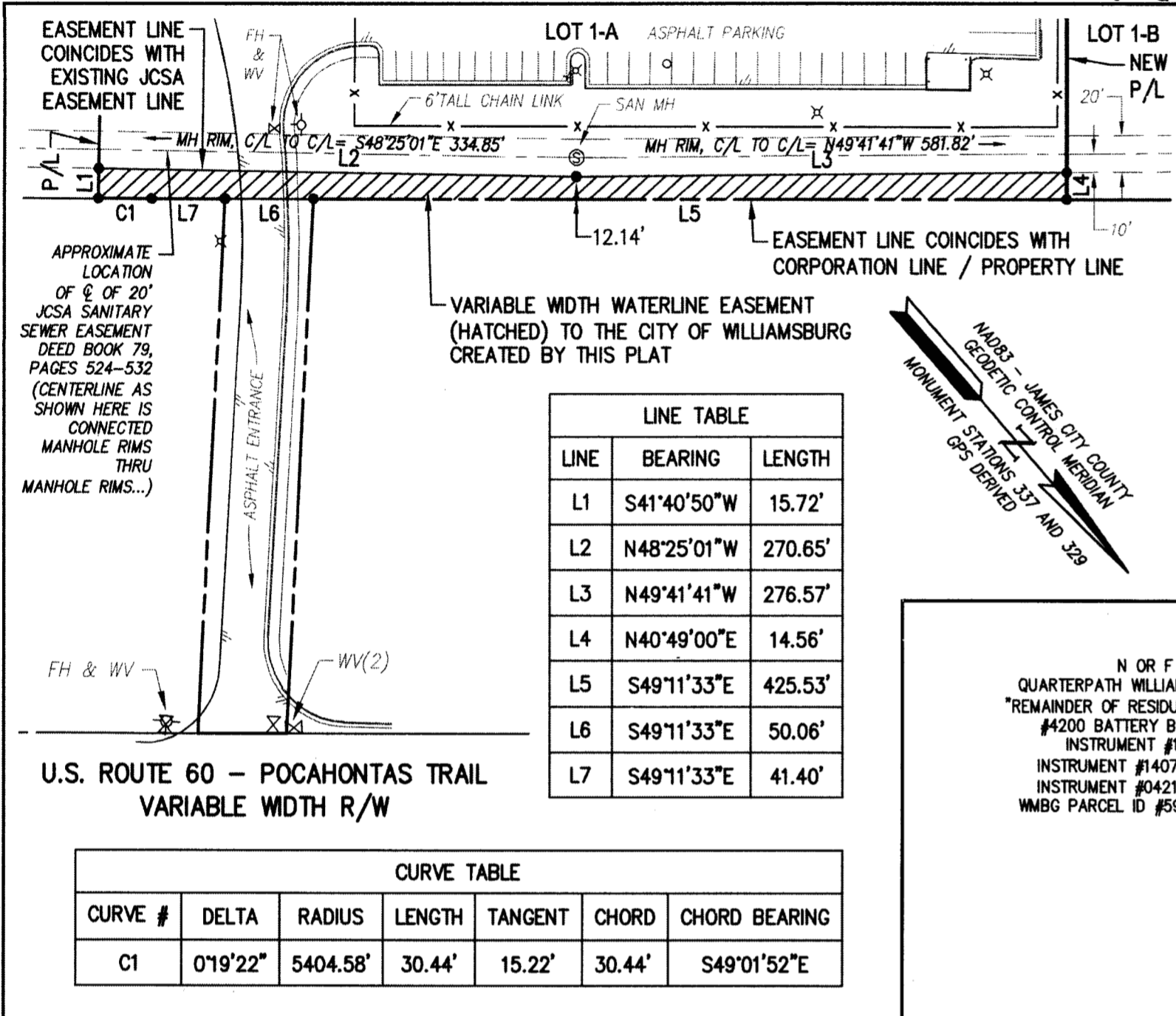


200011516

203217



**VARIABLE WIDTH WATERLINE EASEMENT FOR THE CITY OF WILLIAMSBURG**  
SCALE: 1" = 80'

**BRAFFORD TRACT - LOT 1-A**  
TOTAL AREA= 598,204 S.F.  
13.7329 ACRES  
WITHIN CITY OF WILLIAMSBURG = 13.3882 AC.  
WITHIN JAMES CITY COUNTY = 0.3447 AC.

**BRAFFORD TRACT LOT 1-B**  
TOTAL AREA= 882,016 S.F.±  
20.2483 ACRES±  
WITHIN CITY OF WILLIAMSBURG = 19.6967 AC.±  
WITHIN JAMES CITY COUNTY = 0.5516 AC.

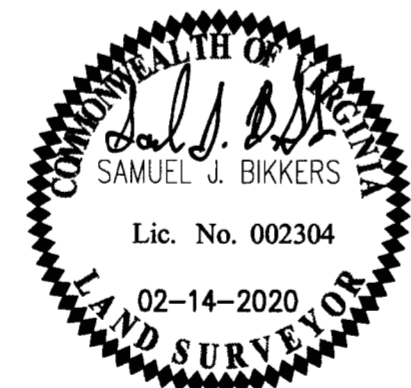
3 Large/Small Plat(s) Recorded herewith as # 203217

3 Large/Small Plat(s) Recorded herewith as # 200011516

City of Williamsburg & County of James City Circuit Court: This PLAT was recorded on July 20, 2020 at 3:10 AM (PM) PG. Document # 203217 MONA A. FOLEY, CLERK

STATE OF VIRGINIA  
CITY OF WILLIAMSBURG & COUNTY OF JAMES CITY CIRCUIT COURT.  
THIS 28 DAY OF July, 2020 THE PLAT SHOWN  
HEREON WAS PRESENTED AND ADMITTED TO RECORD AS THE LAW  
DIRECTS @ 3:10 AM (PM)  
INSTRUMENT # 200011516  
TESTE: MONA A. FOLEY, CLERK

Rev.	Date	Description	Revised By
2	2-10-2020	EASEMENT REFERENCES FROM TITLE REPORT	SJB
1	2-10-2020	ADDRESSED JCC COMMENTS	SJB



**AES**  
CONSULTING ENGINEERS  
5248 Olde Towne Road, Suite 1  
Williamsburg, Virginia 23188  
Phone: (757) 253-0040  
Fax: (757) 220-8994  
www.aesva.com

JCC Case No. S-19-0108  
**SUBDIVISION PLAT**  
**THE BRAFFORD TRACT, LOT 1-A AND LOT 1-B**  
**AND BOUNDARY LINE ADJUSTMENT PLAT**  
BETWEEN JAMES CITY COUNTY PARCEL I.D. #4130640001 AND  
CITY OF WILLIAMSBURG PARCEL I.D. # 560-01-00-001  
FOR  
**THE COLONIAL WILLIAMSBURG FOUNDATION**  
CITY OF WILLIAMSBURG / ROBERTS DISTRICT, JAMES CITY COUNTY VIRGINIA

Project Contacts:	SJB / CMA
Project Number:	W10601-00
Scale:	NOTED
Date:	10-14-2019
Sheet Number	3 OF 3