

202507078

GENERAL SHEET NOTES

EXHIBIT
B

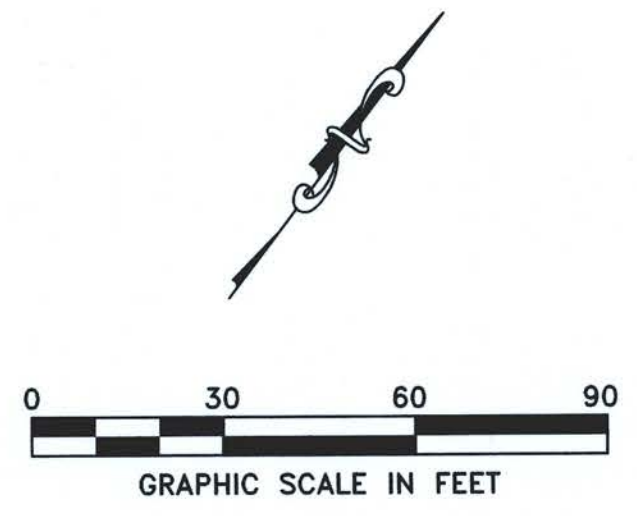
- REFER TO CIVIL GENERAL SHEETS FOR CONSTRUCTION SEQUENCING, CIVIL GENERAL NOTES, EROSION CONTROL NOTES, EXISTING LEGEND, AND ABBREVIATIONS.
- CONTRACTOR IS RESPONSIBLE FOR COORDINATING CIVIL CONSTRUCTION WITH ALL OTHER DISCIPLINES.
- BUILDING FOOTPRINTS AND UTILITY TIE CONNECTIONS ARE APPROXIMATE AND SHOWN FOR REFERENCE ONLY. CONTRACTOR SHALL REFER TO THE LATEST SET OF ARCHITECTURAL AND MEP PLANS FOR EXACT DIMENSIONS AND DETAILS. IT IS THE RESPONSIBILITY OF THE CONTRACTOR TO COORDINATE THE BUILDING UTILITY STUBS WITH THE CONNECTIONS OUTSIDE OF THE BUILDING FOOTPRINT.
- HATCHING SHOWN IS FOR GENERAL INFORMATIONAL PURPOSES.
- DIMENSIONS SHOWN ARE FROM FACE OF CURB, EDGE OF PAVEMENT, OR FACE OF STRUCTURE UNLESS OTHERWISE NOTED.
- ALL BUILDING ENTRANCES, SIDEWALKS, CURB RAMPS, RAMPS AND ACCESSIBLE PARKING SPACES SHALL BE CONSTRUCTED IN ACCORDANCE WITH THE CURRENT ADA AND ADA GUIDELINES AS THEY PERTAIN TO THE REQUIRED GRADES, CONSTRUCTION MATERIALS, SPECIFICATIONS, AND SIGNAGE. IF ANY CONFLICT OCCURS BETWEEN THE ABOVE INFORMATION AND THE PLANS, THE ADA AND ADA GUIDELINES SHALL TAKE PRECEDENCE AND THE CONTRACTOR, PRIOR TO ANY CONSTRUCTION, SHALL NOTIFY THE PROJECT ENGINEER.
- SEE TRAFFIC CONTROL SHEET CT100 FOR SIGN LOCATIONS AND DETAILS.

SITE PLAN KEYNOTES

- ADA RAMP, TYPICAL. SEE DETAIL D1/C-508
- PAINTED CROSSWALK, TYPICAL. SEE DETAIL D2/C-509
- 6" CURB, TYPICAL. SEE DETAIL B2/C-510
- 24" CURB & GUTTER, TYPICAL. SEE DETAIL B1/C-510
- WIPEDOWN CURB OVER 3.0 FT. SEE DETAIL D3/C-509
- 6.0 FT CONCRETE WHEEL STOP, TYPICAL. SEE DETAIL D3/C-508
- PERMEABLE PAVER PARKING, TYPICAL. SEE DETAIL D3/C-507
- 18" CONCRETE BAND FOR PERMEABLE PAVERS, TYPICAL. SEE DETAIL D2/C-507
- 9.0 FT x 18.0 FT STANDARD PARKING SPACE, TYPICAL. SEE DETAIL B1/C-508
- 9.0 FT x 18.0 FT HANDICAP PARKING SPACE, TYPICAL. SEE DETAIL B2/C-508
- STOP BAR, TYPICAL. SEE DETAIL B1/C-509
- 2-20 CY DUMPSTERS & ENCLOSURE. 10'x10' EA. SEE ARCH SHEET AS204 FOR DETAILS
- TIE TO EXISTING ASPHALT PAVEMENT, TYPICAL.
- TIE TO EXISTING CONCRETE SIDEWALK, TYPICAL.
- CONCRETE RETAINING WALL, SEE STRUCTURAL PLANS FOR DETAILS
- BLOCK RETAINING WALL, SEE STRUCTURAL PLANS FOR DETAILS
- 6.0 FT CHAIN LINK FENCE WITH 10.0 FT LOCKED GATE, TYPICAL. SEE DETAIL D3/C-503
- 4.0 FT BLACK IRON FENCE WITH 10.0 FT LOCKED GATE, TYPICAL. SEE DETAIL D1/C-510
- CONCRETE BOLLARD, TYPICAL. SEE DETAIL D1/C-509
- VDOT COMMERCIAL ENTRANCE, EXIT ONLY. SEE DETAIL D3/C-510

SITE PLAN LEGEND

SYMBOL	DESCRIPTION	DETAIL
---	PROPERTY LINE	
---	PERIMETER BUFFER	
---	CENTERLINE ROAD/ AISLE	
---	BUILDING COLLAPSE ZONE	
---	RETAINING WALL	
[Hatched Box]	HEAVY DUTY ASPHALT PAVEMENT	DETAIL B2/ C-507
[Dotted Box]	LIGHT DUTY ASPHALT PAVEMENT	DETAIL D1/ C-507
[Cross-hatched Box]	HEAVY DUTY CONCRETE PAVEMENT	DETAIL B3/ C-507
[Solid Grey Box]	CONCRETE SIDEWALK	DETAIL B4/ C-510
[Patterned Box]	DECORATIVE CONCRETE	DETAIL D2/ C-508
[Patterned Box]	PERMEABLE PAVERS	DETAIL D3/ C-507
[Patterned Box]	GRAVEL PAVEMENT	DETAIL B4/ C-507
---	EASEMENT	



Williamsburg James City County Public Schools

BRIGHT BEGINNINGS SOUTH

at Clara Byrd Baker ES
3131 Ironbound Road
Williamsburg, VA 23185

Architect of Record

Ballou Justice Upton
Architects
2402 N. Parham Rd, Richmond, VA 23229
T: 804 270 0909

Civil Engineer

295 Bendix Road
Suite 340
Virginia Beach, VA 23452
T: 757 533 9368

Structural Engineer

21000 Atlantic Boulevard
Suite 400
Dulles, VA 20166
T: 703 405 0800

MEP Engineers

7814 Carousel Lane
Suite 200
Richmond, VA 23294
T: 804-270-7222

Seal

Key Information

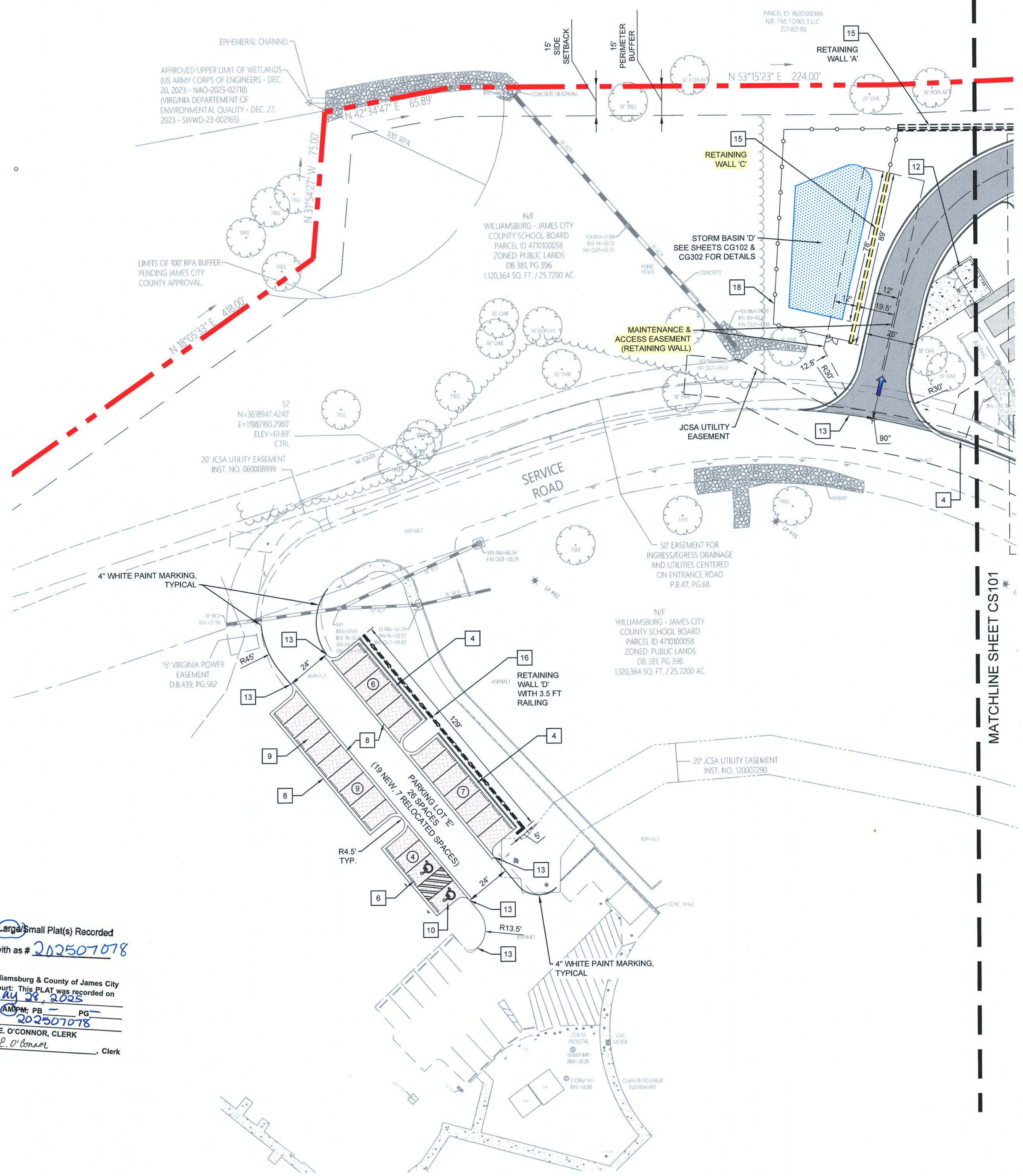
FOR REVIEW PURPOSES ONLY
NOT FOR CONSTRUCTION

No.	Revision	Date
Sheet Title:		

SITE PLAN

Drawn By: HBA
Issue Date: MAY 08, 2025
Scale: 1"=30'
BJUA Project No.: 23002.00
SDE No.: 131-04-00-100
Sheet No.: **CS102**

CONSTRUCTION DOCUMENTS



Large Small Plat(s) Recorded
herewith as # 202507078

City of Williamsburg & County of James City
Circuit Court: This PLAT was recorded on
May 28, 2025
at 1:52 AM PM; PB PG
Document # 202507078
ELIZABETH E. O'CONNOR, CLERK
Elizabeth E. O'Connor, Clerk

