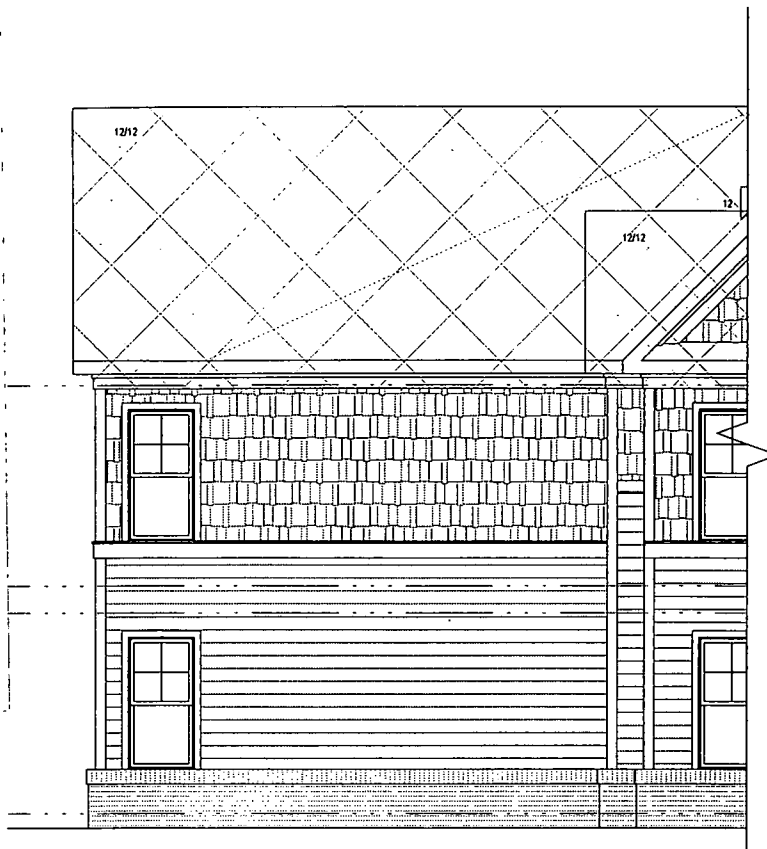
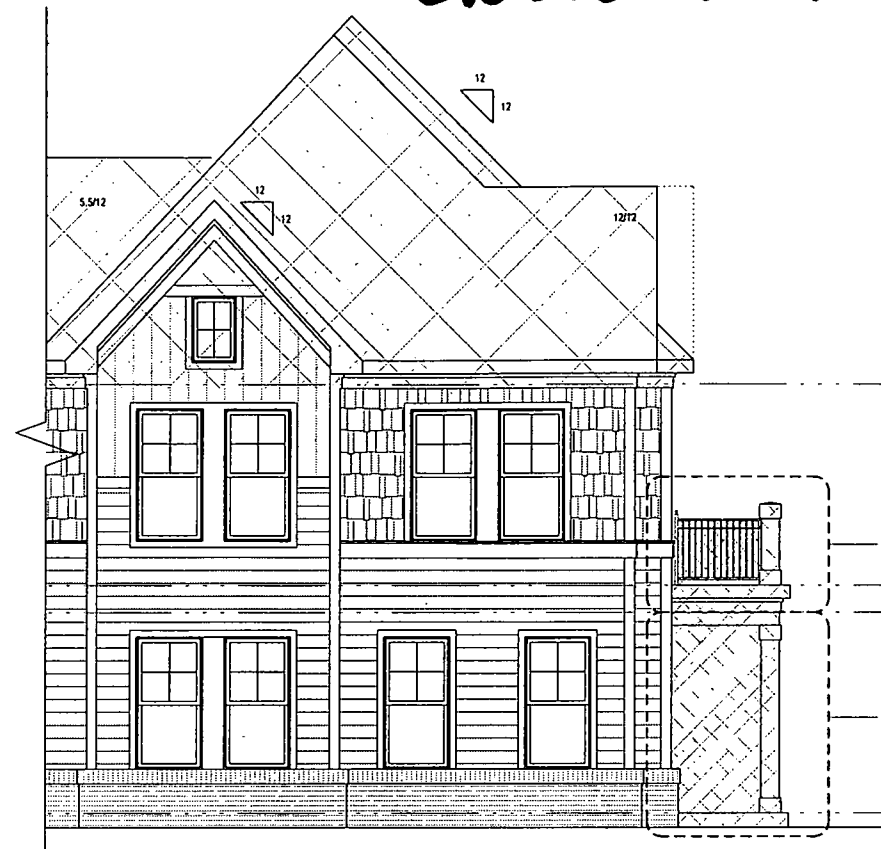


20232770

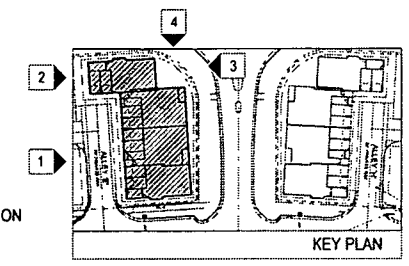


4 SIDE ELEVATION  
A-3b SCALE: 1/8" = 1'-0"

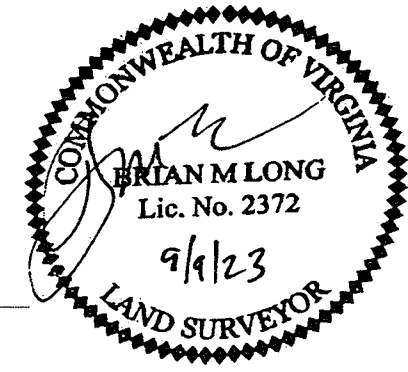


3 REAR ELEVATION  
A-3b SCALE: 1/8" = 1'-0"

CERTIFICATION OF PLANS  
I, BRIAN LONG, A DULY LICENSED LAND SURVEYOR, IN THE COMMONWEALTH OF VIRGINIA, DO HEREBY CERTIFY THAT THIS PLAN IS ACCURATE AND COMPLIES WITH SECTION 55.1-1920(B) OF THE VIRGINIA CONDOMINIUM ACT AS AMENDED, AND THAT ALL UNITS OR PORTIONS OF SUCH UNITS SHOWN HEREON ARE SUBSTANTIALLY COMPLETED.  
DATE: 9/5/23 NAME: BRIAN LONG LIC. NO. 2372  
SQUARE FOOTAGES ARE CALCULATED BY THE SUM OF HORIZONTAL INTERIOR AREAS MEASURED FROM THE BACKSIDE OF SHEETROCK.

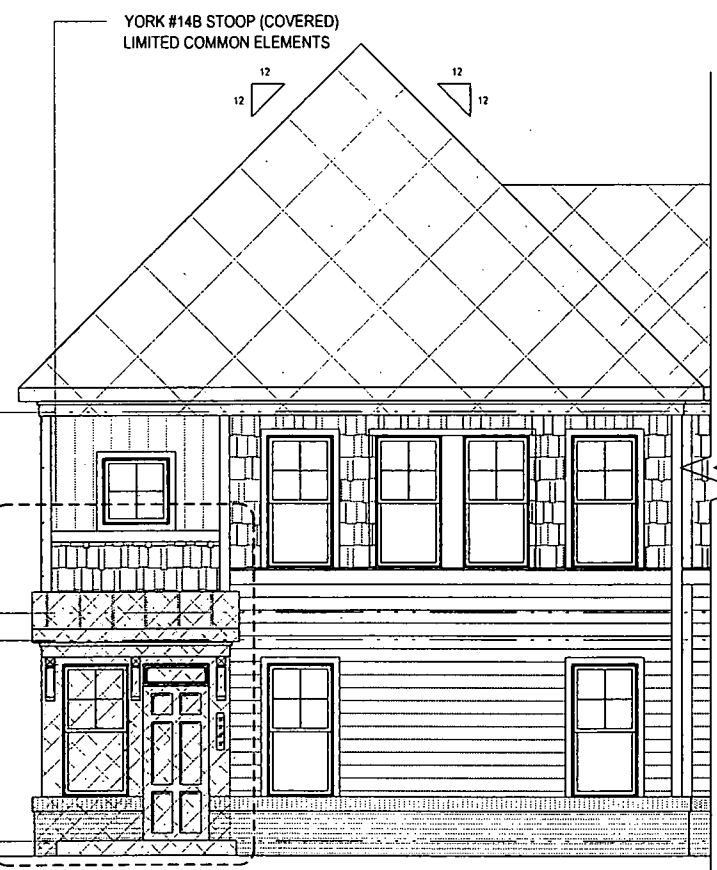


YORK #14B BALCONY (UPPER) LIMITED COMMON ELEMENTS  
LINCOLN #14A & YORK #14B VERANDA (LOWER) LIMITED COMMON ELEMENTS



City of Williamsburg & County of James City  
Circuit Court: This PLAT was recorded on  
at 3:14 AM PM, PG  
Document # 20232770  
ELIZABETH E. O'CONNOR, CLERK  
Elizabeth E. O'Connor, Clerk

17 Large/Small Plat(s) Recorded  
herewith as # 20232770



2 REAR ELEVATION  
A-3b SCALE: 1/8" = 1'-0"



1 REAR ELEVATION  
A-3b SCALE: 1/8" = 1'-0"

16A-KENT COVERED ENTRY  
16B-WINCHESTER COVERED ENTRY

LEGEND

- [Pattern] UNIT 14A LINCOLN
- [Pattern] UNIT 14B YORK
- [Pattern] UNIT 15A KENT
- [Pattern] UNIT 15B WINCHESTER
- [Pattern] UNIT 16A KENT
- [Pattern] UNIT 16B WINCHESTER
- [Pattern] UNIT 17A LINCOLN
- [Pattern] UNIT 17B YORK
- [Pattern] COMMON ELEMENTS
- [Pattern] LIMITED COMMON ELEMENTS

NOTE: THE EXTERIOR OF THE BUILDING SHALL BE CONSIDERED A COMMON ELEMENT EXCEPT FOR PORCHES AND BALCONIES THAT ARE OTHERWISE NOTED AS LIMITED COMMON ELEMENTS.

ARCHITECT: **lessard DESIGN**  
8521 Leesburg Pike | Suite 700 | Vienna, VA 22182  
P: 571.830.1800 | F: 571.830.1801 | www.lessarddesign.com

SEAL & SIGNATURE:

OWNER: **HHHUNT**  
1177 ALBERTA ROAD  
WILLIAMSBURG, VA 23182  
(804) 762-4800

CONSULTANTS:

PROJECT NAME: **VILLAGE GREEN NORTH AT QUARTERPATH, A CONDOMINIUM WILLIAMSBURG, VA**

SHEET TITLE: **CONDO DOCUMENTATION - BUILDING 74 ELEVATION**

ISSUE / REVISION:	DATE
1. CONDO DOCUMENTS	03.22.23

PROJECT No: **HHHUNDA**  
DRAWN BY: **LD**  
CHECKED BY: **LD**  
PLOT DATE: **Nov. 23, 2023**  
FILE NAME: **HHHUNDA\_A3b\_024.dwg**

**A-3b**