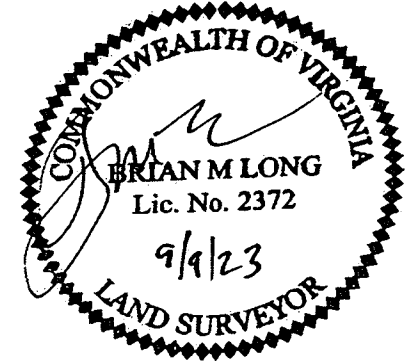
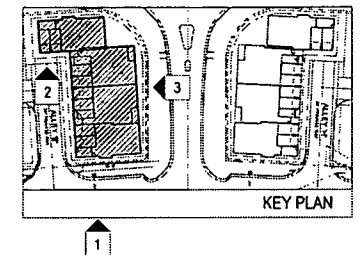


20232770

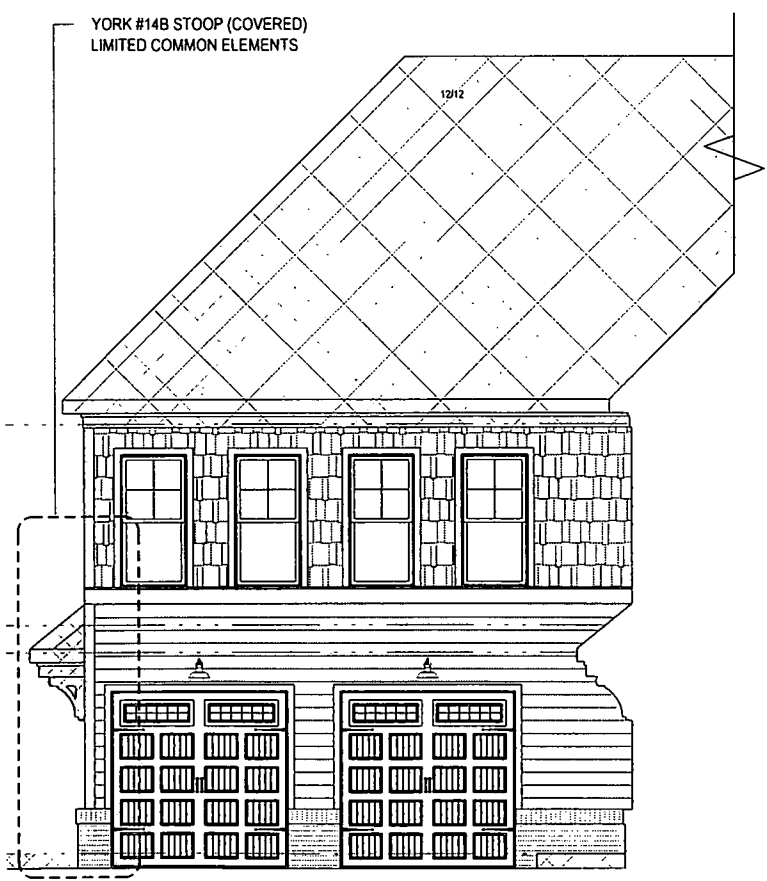
City of Williamsburg & County of James City
 Circuit Court: This PLAT was recorded on
Sept 14, 2023
 at 3:14 AM PM PB PG
 Document # 20232770
 ELIZABETH E. O'CONNOR, CLERK
Elizabeth E. O'Connor, Clerk

17 Large/Small Plat(s) Recorded
 herewith as # 20232770

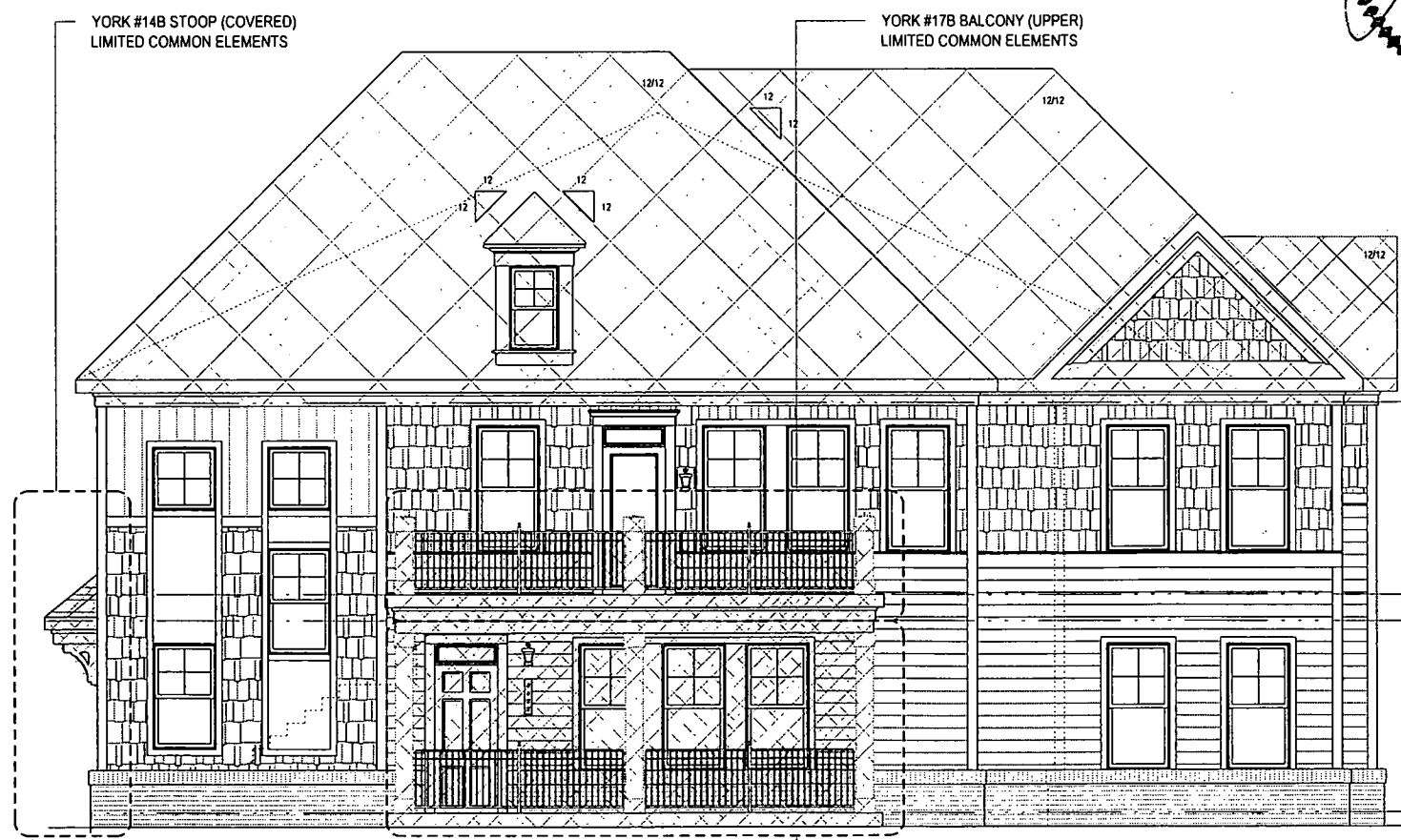
CERTIFICATION OF PLANS
 I, BRIAN LONG, A DULY LICENSED LAND SURVEYOR
 IN THE COMMONWEALTH OF VIRGINIA, DO HEREBY
 CERTIFY THAT THIS PLAN IS ACCURATE AND COMPLIES WITH
 SECTION 55.1-1920(B) OF THE VIRGINIA CONDOMINIUM ACT AS
 AMENDED, AND THAT ALL UNITS OR PORTIONS OF SUCH UNITS
 SHOWN HEREON ARE SUBSTANTIALLY COMPLETED.
Brian Long
 DATE: 9/5/23 NAME: BRIAN LONG
 LIC. NO. 2372
 SQUARE FOOTAGES ARE CALCULATED BY THE SUM OF HORIZONTAL
 INTERIOR AREAS MEASURED FROM THE BACKSIDE OF SHEETROCK.



3 FRONT ELEVATION
 A-3a SCALE: 1/8" = 1'-0"



2 SIDE ELEVATION
 A-3a SCALE: 1/8" = 1'-0"

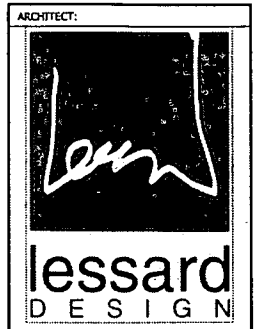


1 SIDE ELEVATION
 A-3a SCALE: 1/8" = 1'-0"

LEGEND

- [Pattern] UNIT 14A LINCOLN
- [Pattern] UNIT 14B YORK
- [Pattern] UNIT 15A KENT
- [Pattern] UNIT 15B WINCHESTER
- [Pattern] UNIT 16A KENT
- [Pattern] UNIT 16B WINCHESTER
- [Pattern] UNIT 17A LINCOLN
- [Pattern] UNIT 17B YORK
- [Pattern] COMMON ELEMENTS
- [Pattern] LIMITED COMMON ELEMENTS

NOTE: THE EXTERIOR OF THE BUILDING SHALL BE CONSIDERED A COMMON ELEMENT EXCEPT FOR PORCHES AND BALCONIES THAT ARE OTHERWISE NOTED AS LIMITED COMMON ELEMENTS.



8521 Leesburg Pike | Suite 700 |
 Vienna, VA 22182
 P: 571.830.1800 | F: 571.830.1801
 www.lessarddesign.com

SEAL & SIGNATURE:



CONSULTANTS:

PROJECT NAME:
 VILLAGE GREEN NORTH AT QUARTERPATH, A CONDOMINIUM
 WILLIAMSBURG, VA

SHEET TITLE:
 CONDO DOCUMENTATION - BUILDING 74
 ELEVATION

ISSUE / REVISION:		DATE
No.	DESCRIPTION	
1	CONDO DOCUMENTS	03.22.23

PROJECT No: HUR003A
 DRAWN BY: LD
 CHECKED BY: LD
 PLOT DATE: 09.22.2023
 FILE NAME: HUR003A_A3a_071.dwg

A-3a