

#20231630

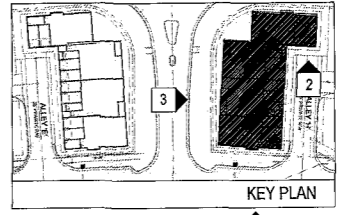
City of Williamsburg & County of James City
 Circuit Court: This PLAT was recorded on
 at 11:08 AM PM, PB
 Document # 20231630 PG
 ELIZABETH E. O'CONNOR, CLERK
 Elizabeth E. O'Connor, Clerk



3 FRONT ELEVATION
 A-3a SCALE: 1/8" = 1'-0"

KENT #11A & WINCHESTER #11B VERANDA (LOWER) LIMITED COMMON ELEMENTS

CERTIFICATION OF PLANS
 I, Brian Long, A DULY LICENSED ENGINEER ARCHITECT, IN THE COMMONWEALTH OF VIRGINIA, DO HEREBY CERTIFY THAT THIS PLAN IS ACCURATE AND COMPLIES WITH SECTION 55.1-1920(B) OF THE VIRGINIA CONDOMINIUM ACT AS AMENDED, AND THAT ALL UNITS OR PORTIONS OF SUCH UNITS SHOWN HEREON ARE SUBSTANTIALLY COMPLETED.
 DATE: 4-6-23 NAME: Brian Long LIC. NO. 2372
 SQUARE FOOTAGES ARE CALCULATED BY THE SUM OF HORIZONTAL INTERIOR AREAS MEASURED FROM THE BACKSIDE OF SHEETROCK.



KEY PLAN

- LEGEND
- UNIT 10A LINCOLN
 - UNIT 10B YORK
 - UNIT 11A KENT
 - UNIT 11B WINCHESTER
 - UNIT 12A KENT
 - UNIT 12B WINCHESTER
 - UNIT 13A LINCOLN
 - UNIT 13B YORK
 - COMMON ELEMENTS
 - LIMITED COMMON ELEMENTS
- NOTE: THE EXTERIOR OF THE BUILDING SHALL BE CONSIDERED A COMMON ELEMENT EXCEPT FOR PORCHES AND BALCONIES THAT ARE OTHERWISE NOTED AS LIMITED COMMON ELEMENTS.

ARCHITECT:

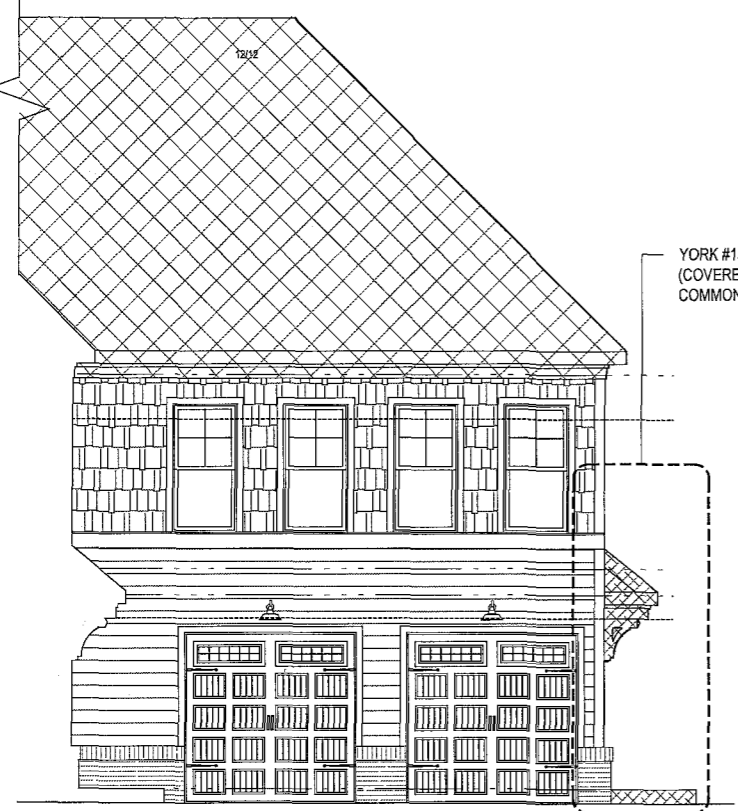
 8521 Leesburg Pike | Suite 700 |
 Vienna, VA 22182
 P: 571.830.1800 | F: 571.830.1801
 www.lessarddesign.com

SEAL & SIGNATURE:
 OWNER:

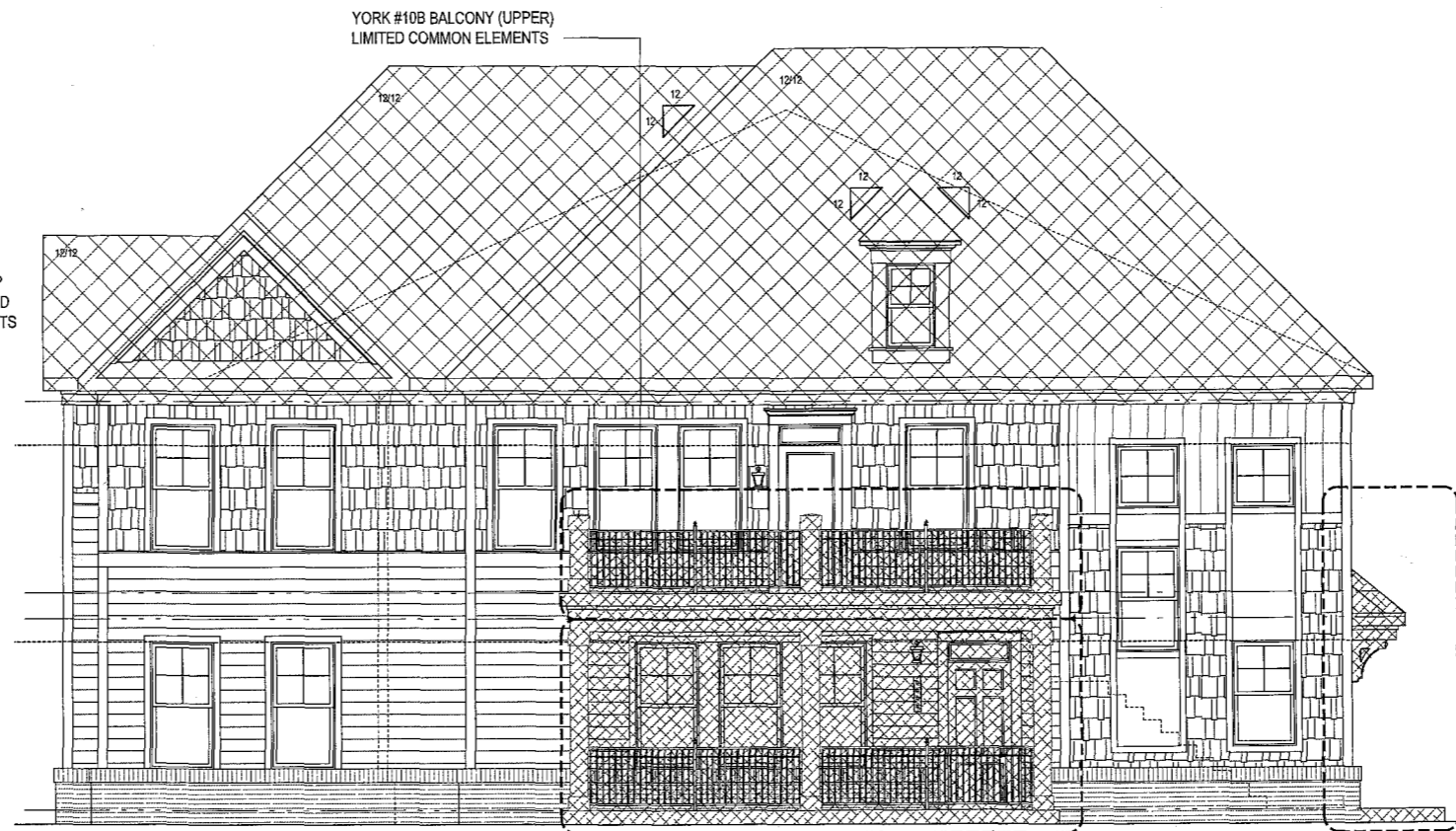
 HHHunt
 11227 NORTON ROAD
 FALLS CHURCH, VA 22040
 (804) 782-4800

CONSULTANTS:

17 Large/Small Plat(s) Recorded
 herewith as # 20231630



2 SIDE ELEVATION
 A-3a SCALE: 1/8" = 1'-0"



1 SIDE ELEVATION
 A-3a SCALE: 1/8" = 1'-0"

YORK #10B & LINCOLN #10A (LOWER) LIMITED COMMON ELEMENTS

YORK #10B STOOP (COVERED) LIMITED COMMON ELEMENTS

PROJECT NAME:
 HHHunt
 VILLAGE GREEN NORTH AT QUARTERPATH, A CONDOMINIUM
 WILLIAMSBURG, VA
 SHEET TITLE:
 CONDO DOCUMENTATION - BUILDING 71
 ELEVATION

ISSUE / REVISION:		
No.	DESCRIPTION	DATE
1	CONDO DOCUMENTS	03-22-23

PROJECT No: HUN003A
 DRAWN BY: LD
 CHECKED BY:
 PLOT DATE: 04-20-2023
 FILE NAME: HUN003A_A3a_071.dwg

A-3a

© 2023 LESSARD DESIGN INC. EXPRESSLY RESERVING ITS COMMON-LAW COPYRIGHT AND OTHER PROPERTY RIGHTS IN THESE PLANS. THESE PLANS ARE NOT TO BE REPRODUCED, CHANGED OR COPIED IN ANY FORM OR MANNER WHATSOEVER, NOR ARE THEY TO BE ASSIGNED TO ANY THIRD PARTY, WITHOUT FIRST OBTAINING THE EXPRESS WRITTEN PERMISSION AND CONSENT OF LESSARD DESIGN INC.