

17 Large/Small Plat(s) Recorded
herewith as # 20231630

City of Williamsburg & County of James City
Circuit Court: This PLAT was recorded on

July 6, 2023
at 11:08 AM PM, PB PG
Document # 20231630
ELIZABETH E. O'CONNOR, CLERK
Elizabeth E. O'Connor, Clerk

#20231630

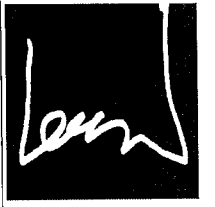
CERTIFICATION OF PLANS

I, Brian Long, A DULY LICENSED ENGINEER/ARCHITECT, IN THE COMMONWEALTH OF VIRGINIA, DO HEREBY CERTIFY THAT THIS PLAN IS ACCURATE AND COMPLIES WITH SECTION 55.1-1920(B) OF THE VIRGINIA CONDOMINIUM ACT AS AMENDED, AND THAT ALL UNITS OR PORTIONS OF SUCH UNITS SHOWN HEREON ARE SUBSTANTIALLY COMPLETED.

DATE: 4-6-23 NAME: Brian Long
LIC. NO. 2372

SQUARE FOOTAGES ARE CALCULATED BY THE SUM OF HORIZONTAL INTERIOR AREAS MEASURED FROM THE BACKSIDE OF SHEETROCK.

ARCHITECT:



**lessard
DESIGN**

8521 Leesburg Pike | Suite 700 |
Virginia, VA 22152
P: 571.830.1800 | F: 571.830.1801
www.lessarddesign.com

SEAL & SIGNATURE:

OWNER:



CONSULTANTS:

PROJECT NAME:
HHHunt
VILLAGE GREEN NORTH AT QUARTERPATH, A CONDOMINIUM
WILLIAMSBURG, VA

SHEET TITLE:
**CONDO DOCUMENTATION - BUILDING 71
KENT # 12A / WINCHESTER # 12B FLOOR PLANS**

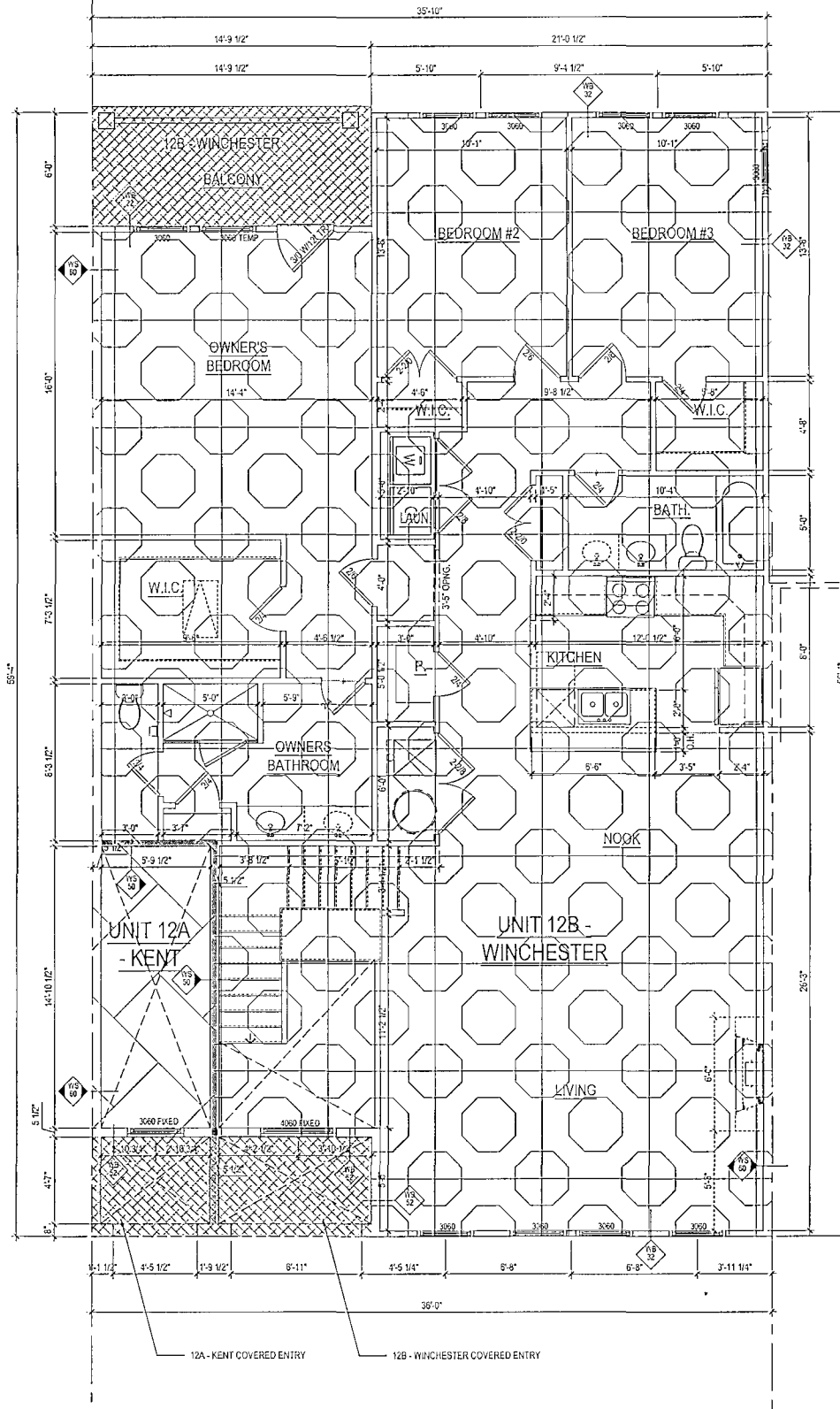
PROJECT No:

ISSUE / REVISION:

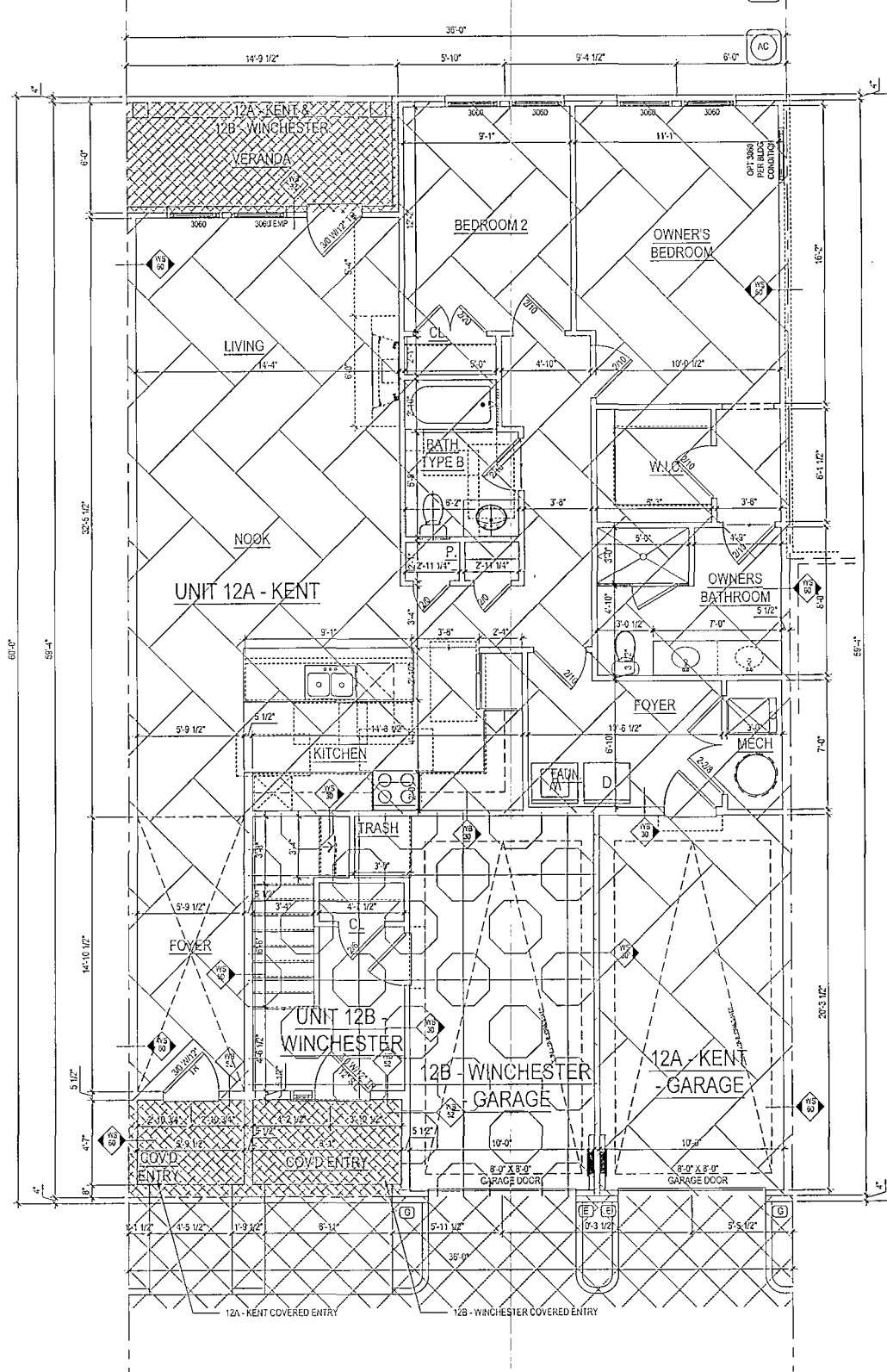
No.	DESCRIPTION	DATE
1	CONDO DOCUMENTS	03-22-23

DRAWN BY: LD
CHECKED BY: [Signature]
PLOT DATE: Mar. 22, 2023
FILE NAME: HUN003A_02_071.cdw

A-2b



2 SECOND FLOOR PLAN @ ALL ELEV.
SCALE: 1/8" = 1'-0"
WINCHESTER AREA: 1,936 SQ. FT.



1 GROUND FLOOR PLAN @ ALL ELEV.
SCALE: 1/8" = 1'-0"
KENT AREA: 1,429 SQ. FT.

LEGEND

- UNIT 10A LINCOLN
- UNIT 10B YORK
- UNIT 11A KENT
- UNIT 11B WINCHESTER
- UNIT 12A KENT
- UNIT 12B WINCHESTER
- UNIT 13A LINCOLN
- UNIT 13B YORK
- COMMON ELEMENTS
- LIMITED COMMON ELEMENTS

NOTE: THE EXTERIOR OF THE BUILDING SHALL BE CONSIDERED A COMMON ELEMENT EXCEPT FOR PORCHES AND BALCONIES THAT ARE OTHERWISE NOTED AS LIMITED COMMON ELEMENTS.