

202312239

MATCHLINE - SEE SHEET 3

MATCHLINE - SEE SHEET 5

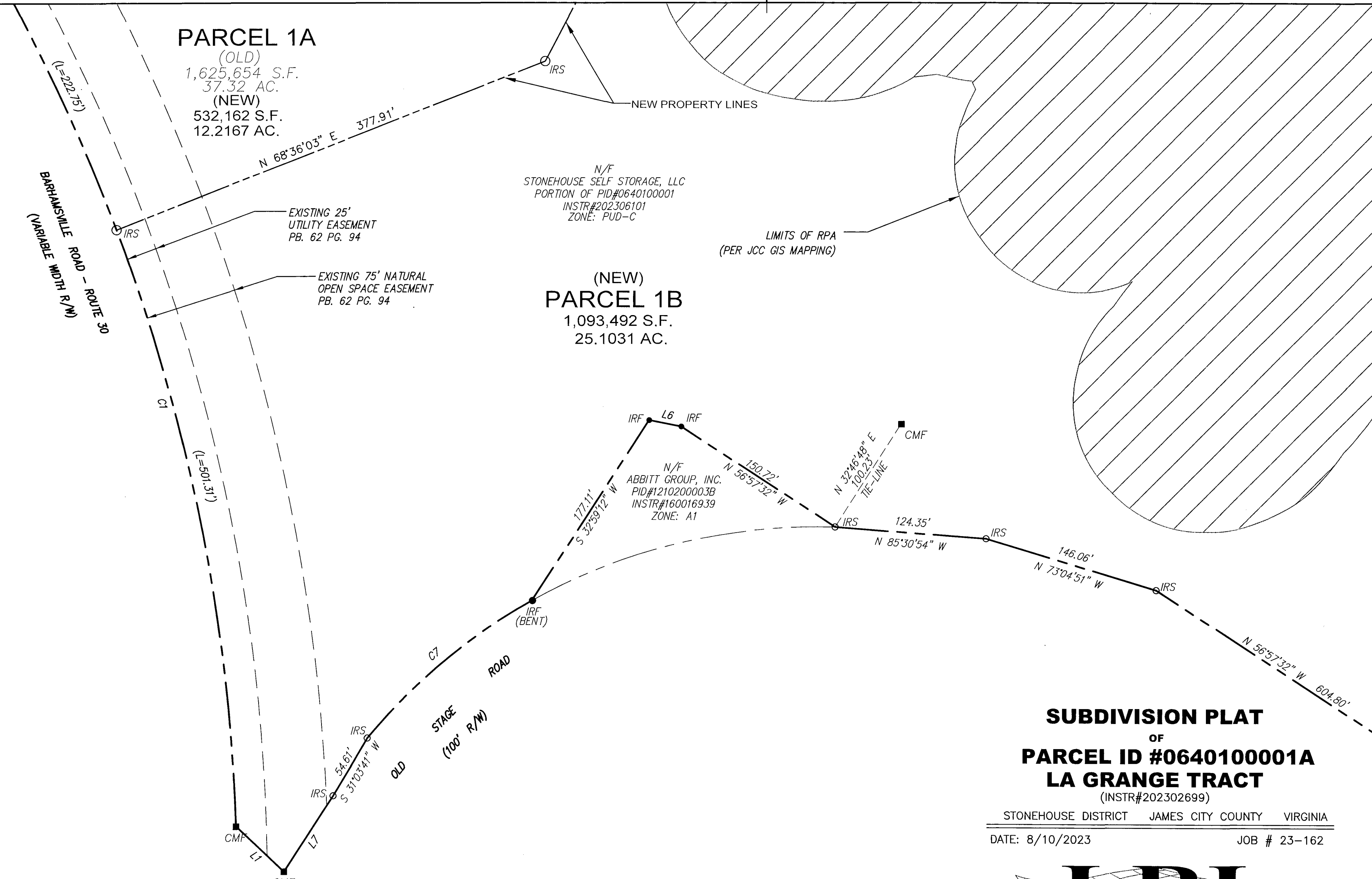
VIRGINIA COORDINATE SYSTEM
1983 (SOUTH ZONE)

PARCEL 1A

(OLD)
1,625,654 S.F.
37.32 AC.
(NEW)
532,162 S.F.
12.2167 AC.

**(NEW)
PARCEL 1B**

1,093,492 S.F.
25.1031 AC.

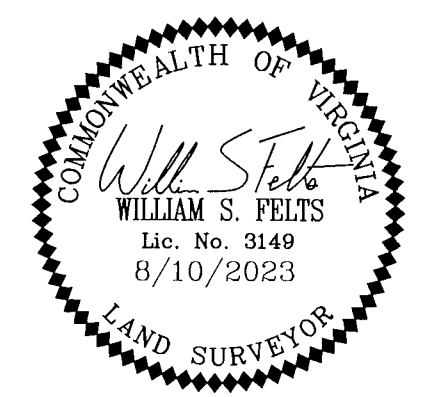


**SUBDIVISION PLAT
OF
PARCEL ID #064010001A
LA GRANGE TRACT**

(INSTR#202302699)
STONEHOUSE DISTRICT JAMES CITY COUNTY VIRGINIA

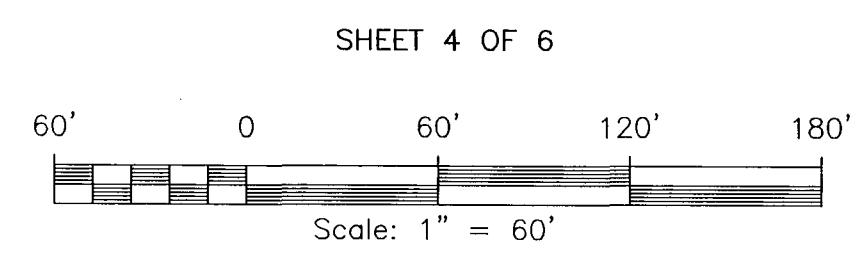
DATE: 8/10/2023 JOB # 23-162

**LRI
LANDTECH
RESOURCES, INC.**
ENGINEERING AND SURVEYING
CONSULTANTS
205E Bulifants Blvd., Williamsburg, VA 23188
Ph: (757) 565-1677 Fax: (757) 565-0782
web: landtechresources.com



6 Large/Small Plat(s) Recorded
herewith as #202312239

City of Williamsburg & County of James City
Circuit Court: This PLAT was recorded on
November 20, 2023
at 11:05 AM/PM, PB — PG —
Document # 202312239
ELIZABETH E. O'CONNOR, CLERK
Elizabeth E. O'Connor, Clerk



JCC-S-23-0025