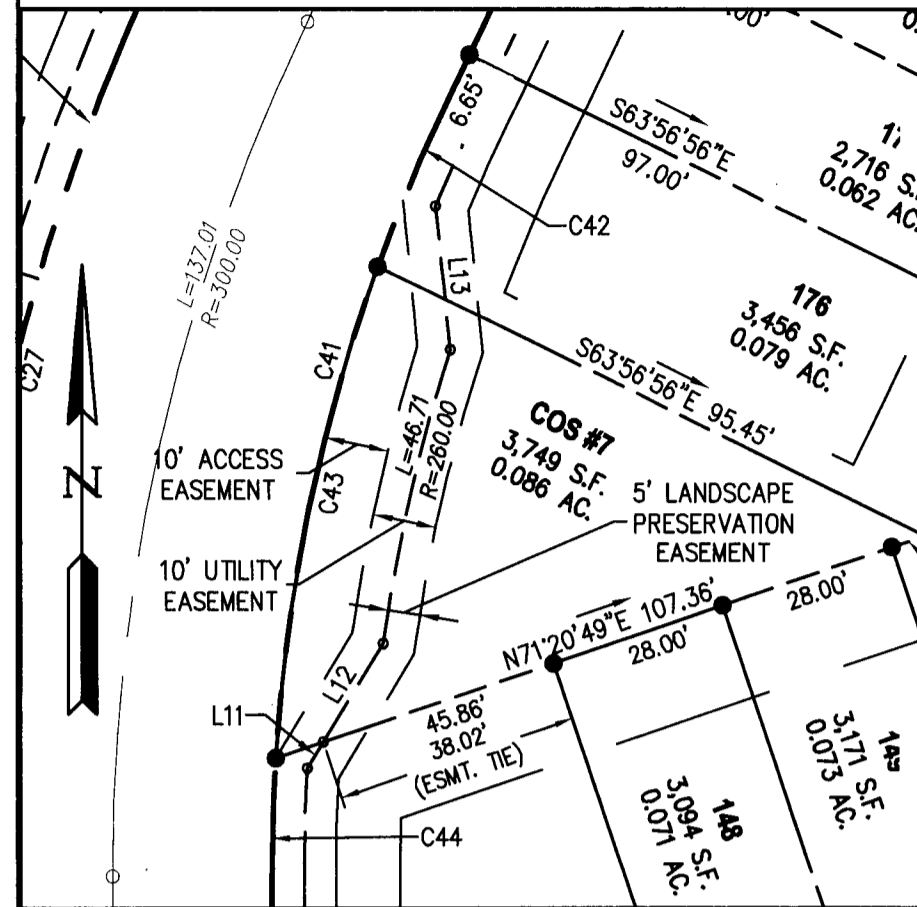
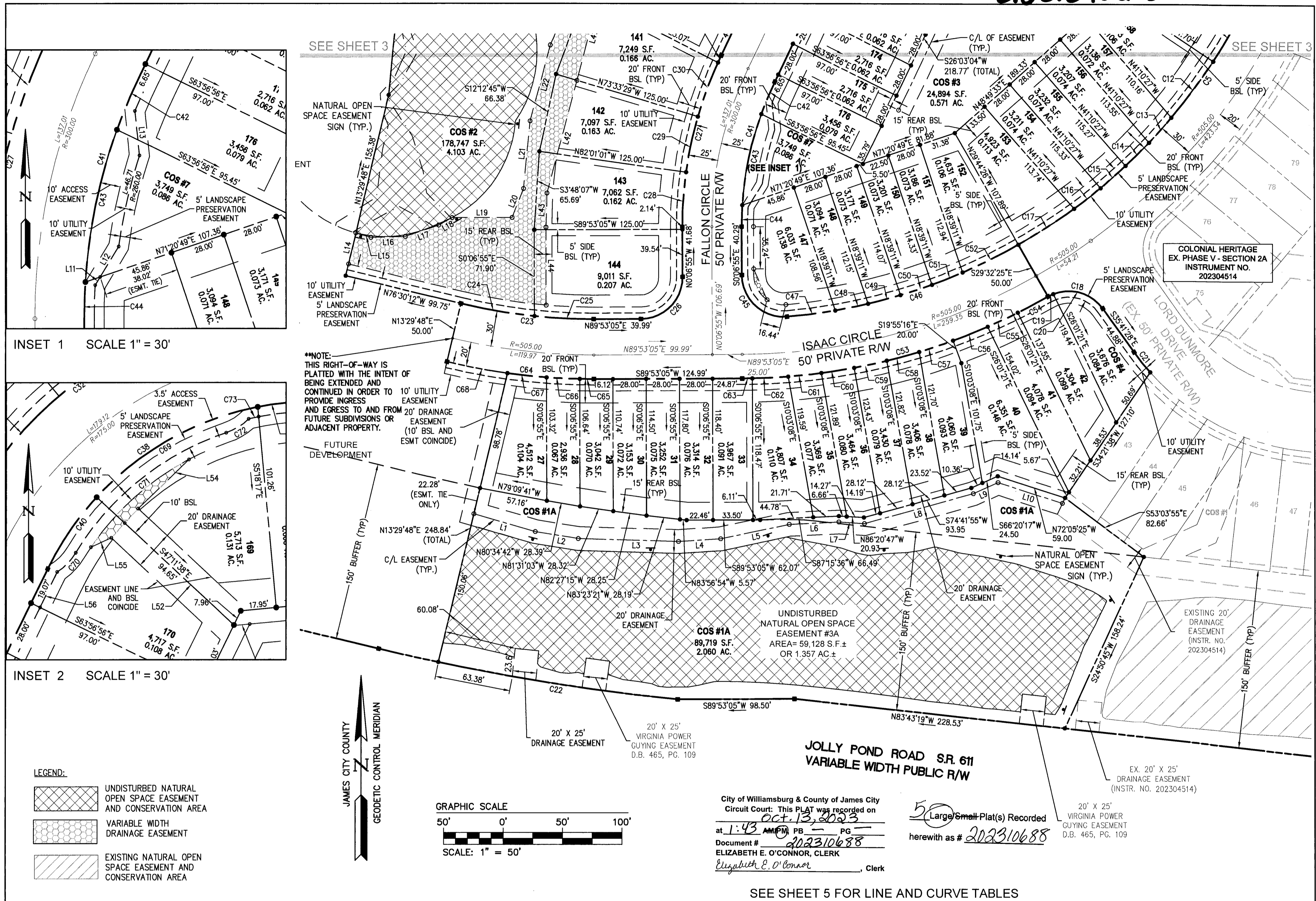
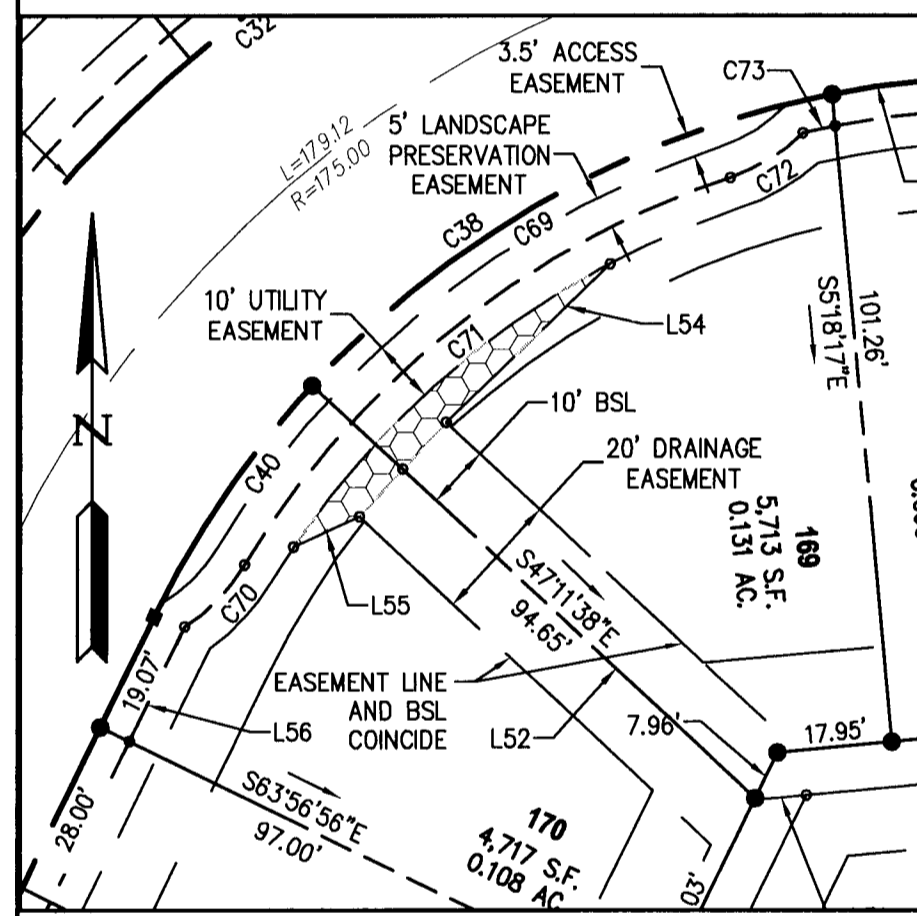


202310688



INSET 1 SCALE 1" = 30'



INSET 2 SCALE 1" = 30'

**\*\*NOTE:**  
THIS RIGHT-OF-WAY IS PLATTED WITH THE INTENT OF BEING EXTENDED AND CONTINUED IN ORDER TO PROVIDE INGRESS AND EGRESS TO AND FROM FUTURE SUBDIVISIONS OR ADJACENT PROPERTY.

FUTURE DEVELOPMENT

10' UTILITY EASEMENT  
20' DRAINAGE EASEMENT  
10' BSL AND ESMT COINCIDE

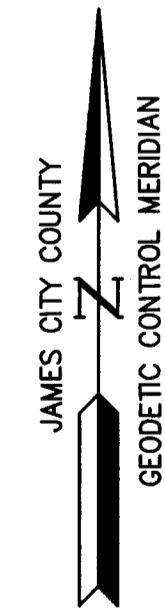
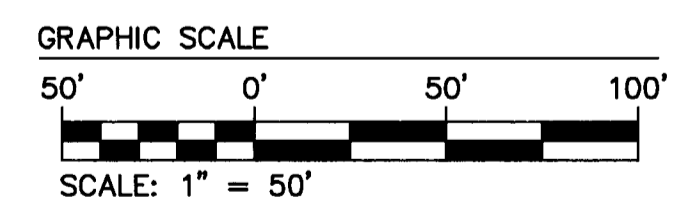
22.28' (ESMT. TIE ONLY)

150' BUFFER (TYP.)

20' X 25' DRAINAGE EASEMENT

20' X 25' VIRGINIA POWER GUYING EASEMENT D.B. 465, PG. 109

- LEGEND:**
- UNDISTURBED NATURAL OPEN SPACE EASEMENT AND CONSERVATION AREA
  - VARIABLE WIDTH DRAINAGE EASEMENT
  - EXISTING NATURAL OPEN SPACE EASEMENT AND CONSERVATION AREA

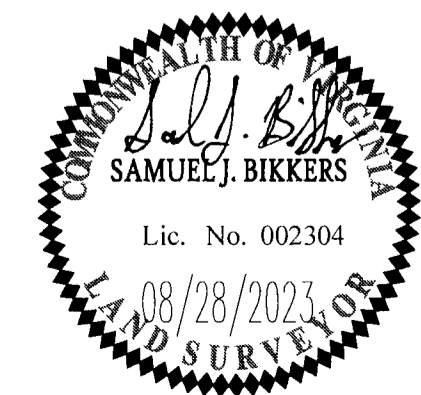


City of Williamsburg & County of James City  
Circuit Court: This PLAT was recorded on  
Oct 13, 2023  
at 1:43 AM PM PB PG  
Document # 202310688  
ELIZABETH E. O'CONNOR, CLERK  
Elizabeth E. O'Connor, Clerk

50 Large/Small-Plat(s) Recorded  
herewith as # 202310688

SEE SHEET 5 FOR LINE AND CURVE TABLES

Rev.	Date	Description	Revised by
1	8/28/23	REVISED PER COUNTY COMMENTS DATED AUGUST 24, 2023	JFS
			Revised by



**AES**  
CONSULTING ENGINEERS  
Hampton Roads | Central Virginia | Middle Peninsula

5248 Olde Towne Road, Suite 1  
Williamsburg, Virginia 23188  
Phone: (757) 253-0040  
Fax: (757) 220-8994  
www.aesva.com

PLAT OF SUBDIVISION  
LOTS 27-42, 129-144, 147-176  
COS #1A, COS #2, COS #3, COS #4 & COS #7  
**COLONIAL HERITAGE**  
PHASE V - SECTION 2B  
OWNER / DEVELOPER: COLONIAL HERITAGE, LLC

STONEHOUSE DISTRICT | JAMES CITY COUNTY | VIRGINIA

JCC CASE NO. S-23-0032

Project Contacts: SJBJ/JS  
Project Number: 8881-52C  
Scale: 1" = 50' Date: 08/26/23  
Sheet Number: 4 of 5