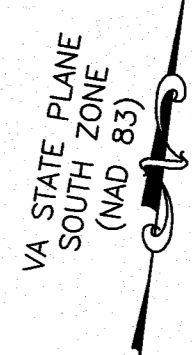
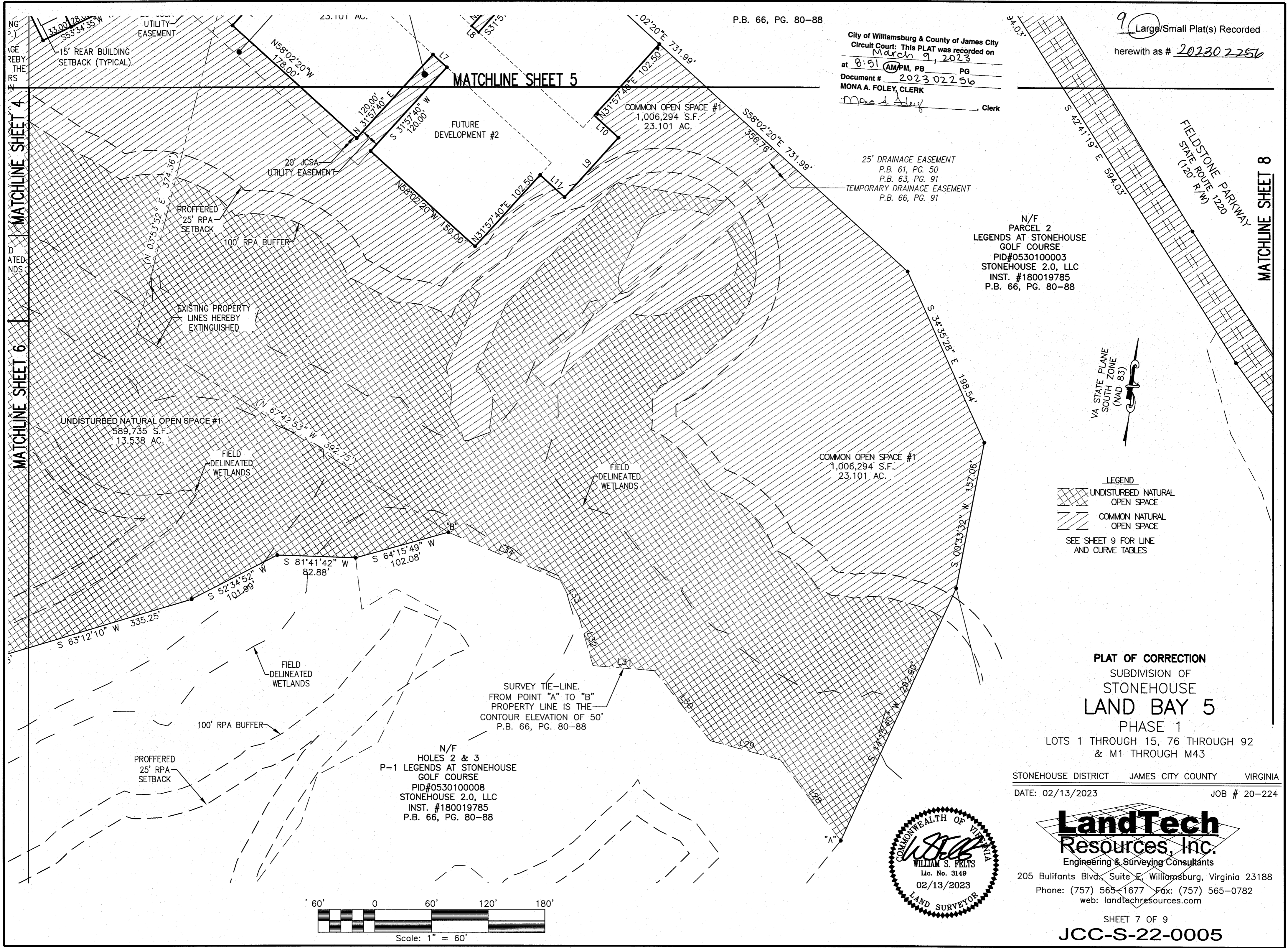


20 230 2256

P.B. 66, PG. 80-88

City of Williamsburg & County of James City  
Circuit Court: This PLAT was recorded on  
March 9, 2023  
at 8:51 AM/PM, PB PG  
Document # 2023 02256  
MONA A. FOLEY, CLERK  
Mona A. Foley, Clerk

9 Large/Small Plat(s) Recorded  
herewith as # 202302256

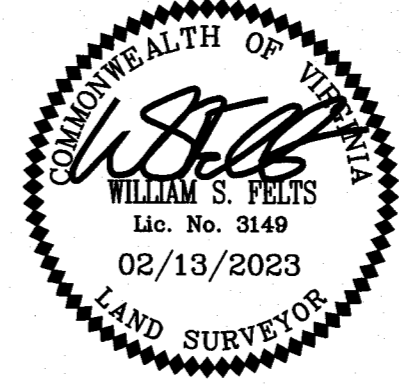


**LEGEND**  
[Cross-hatched pattern] UNDISTURBED NATURAL OPEN SPACE  
[Diagonal line pattern] COMMON NATURAL OPEN SPACE  
SEE SHEET 9 FOR LINE AND CURVE TABLES

**PLAT OF CORRECTION**  
SUBDIVISION OF  
**STONEHOUSE**  
**LAND BAY 5**  
PHASE 1

LOTS 1 THROUGH 15, 76 THROUGH 92  
& M1 THROUGH M43

STONEHOUSE DISTRICT JAMES CITY COUNTY VIRGINIA  
DATE: 02/13/2023 JOB # 20-224



**LandTech**  
Resources, Inc.  
Engineering & Surveying Consultants

205 Bulifants Blvd., Suite E, Williamsburg, Virginia 23188  
Phone: (757) 565-1677 Fax: (757) 565-0782  
web: landtechresources.com

