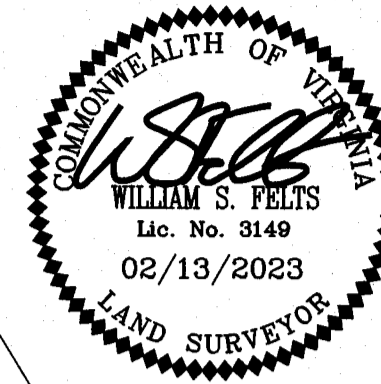


202302256

PLAT OF CORRECTION
SUBDIVISION OF
STONEHOUSE
LAND BAY 5
PHASE 1

LOTS 1 THROUGH 15, 76 THROUGH 92
& M1 THROUGH M43
STONEHOUSE DISTRICT JAMES CITY COUNTY VIRGINIA
DATE: 02/13/2023 JOB # 20-224

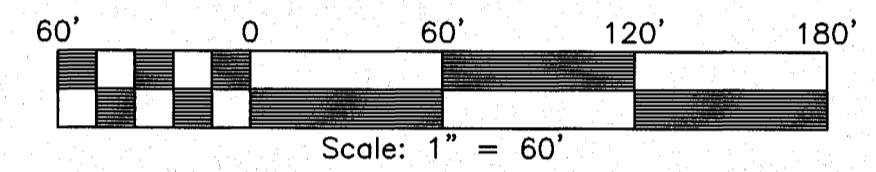


LandTech Resources, Inc.
Engineering & Surveying Consultants

205 Bulfants Blvd., Suite E, Williamsburg, Virginia 23188
Phone: (757) 565-1677 Fax: (757) 565-0782
web: landtechresources.com

SHEET 5 OF 9

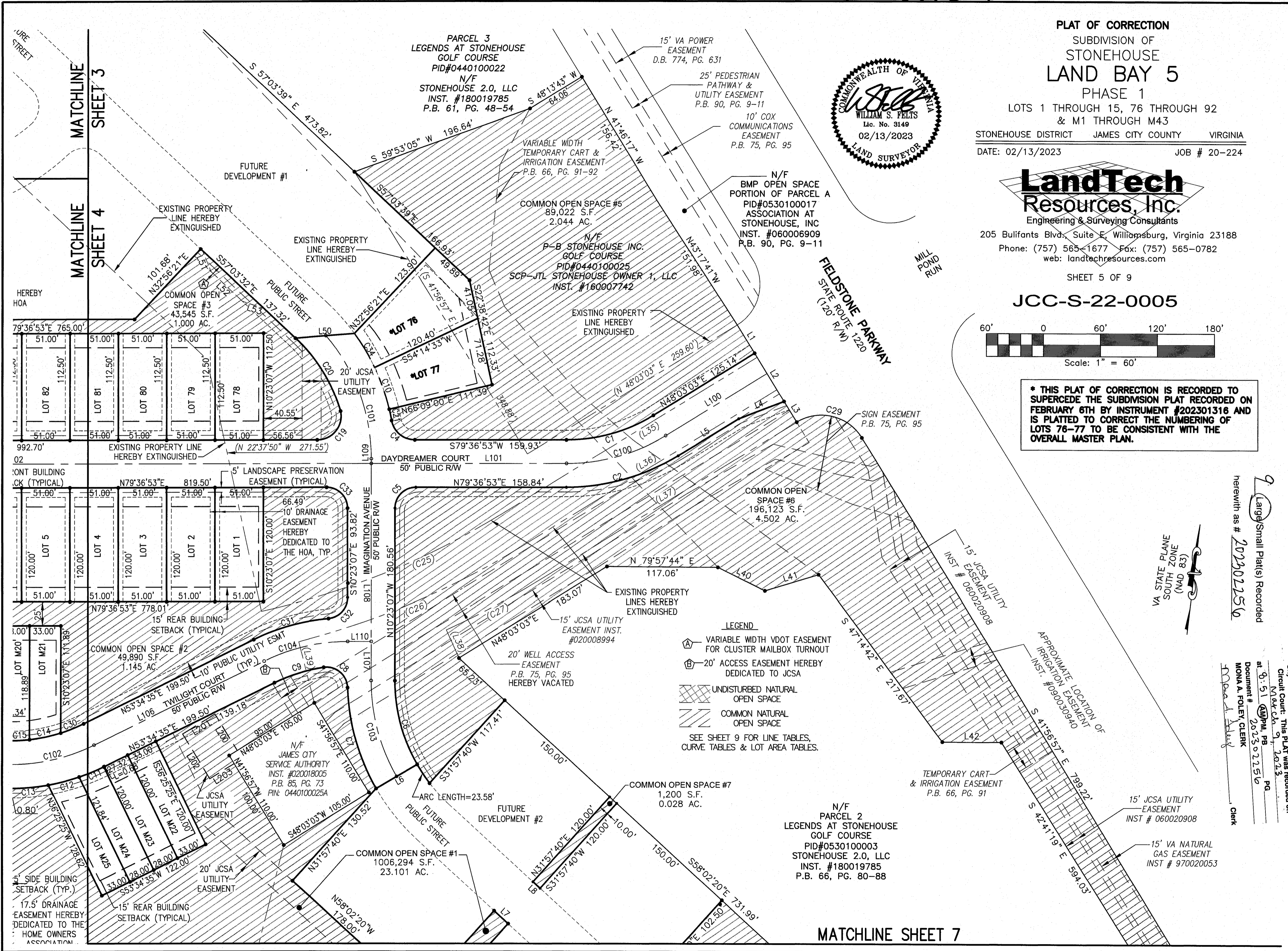
JCC-S-22-0005



* THIS PLAT OF CORRECTION IS RECORDED TO SUPERCEDE THE SUBDIVISION PLAT RECORDED ON FEBRUARY 6TH BY INSTRUMENT #202301316 AND IS PLATTED TO CORRECT THE NUMBERING OF LOTS 76-77 TO BE CONSISTENT WITH THE OVERALL MASTER PLAN.

Large/Small Plat(s) Recorded herewith as # 202302256

City of Williamsburg & County of James City
Circuit Court: This Plat was recorded on
MAY 24 2023
at 9:51 AM PM, PB
Document # 202302256
MONA A. FOLEY CLERK
Clerk



LEGEND
A VARIABLE WIDTH VDOT EASEMENT FOR CLUSTER MAILBOX TURNOUT
B 20' ACCESS EASEMENT HEREBY DEDICATED TO JCSA
UNDISTURBED NATURAL OPEN SPACE
COMMON NATURAL OPEN SPACE
SEE SHEET 9 FOR LINE TABLES, CURVE TABLES & LOT AREA TABLES.