

202301310

SUBDIVISION OF  
STONEHOUSE  
LAND BAY 5  
PHASE 1

LOTS 1 THROUGH 15, 76 THROUGH 92  
& M1 THROUGH M43

STONEHOUSE DISTRICT JAMES CITY COUNTY VIRGINIA

DATE: 01/10/2023

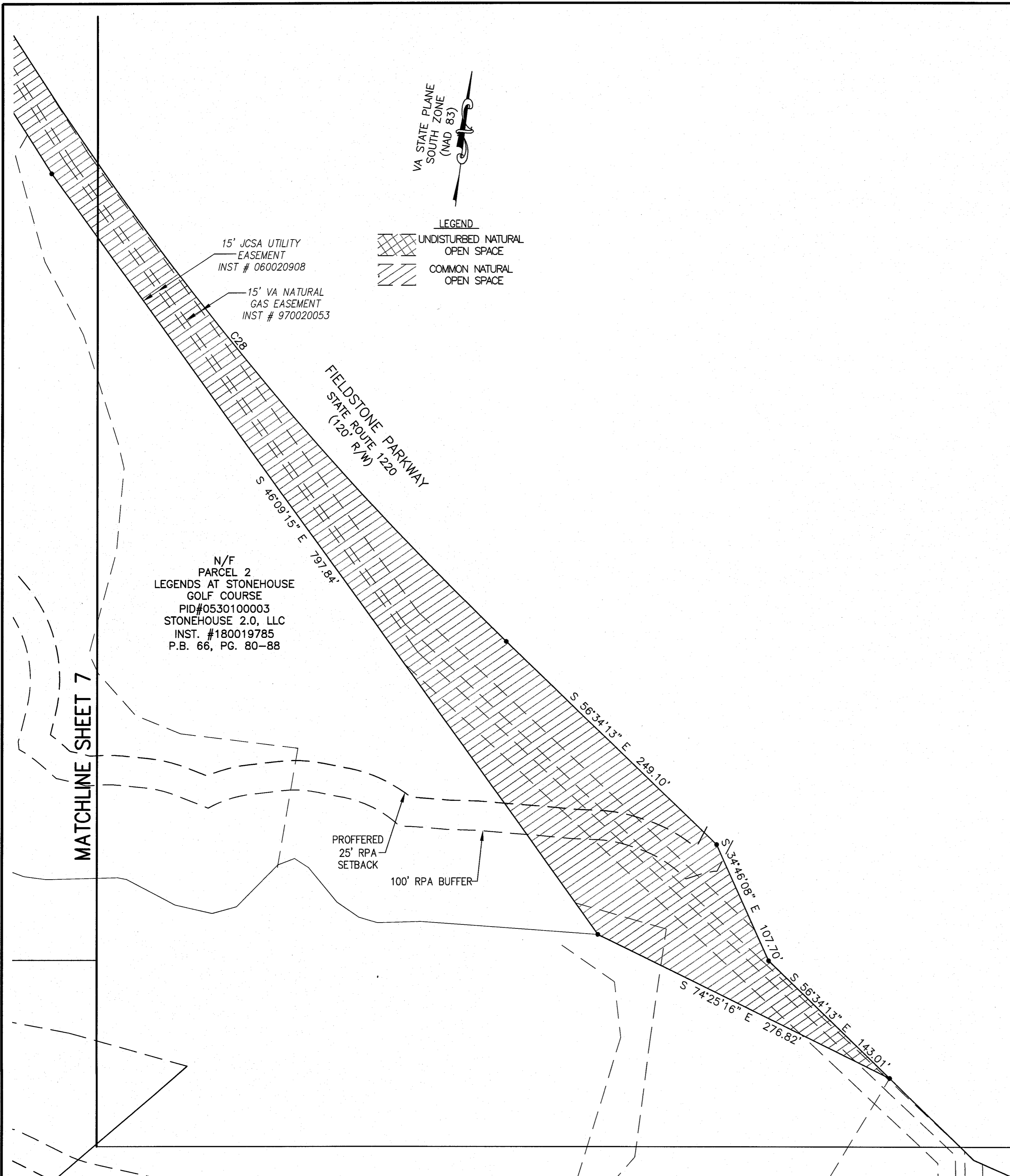
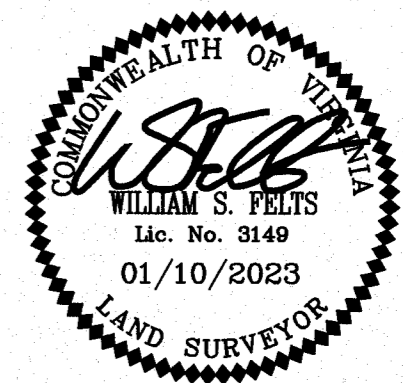
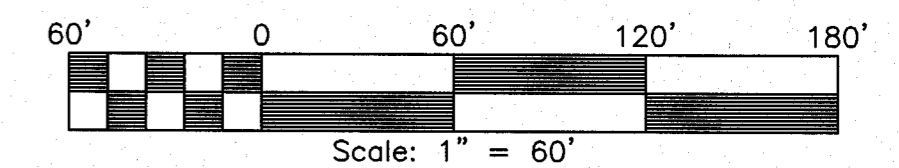
JOB # 20-224



Engineering & Surveying Consultants  
205 Bulifants Blvd., Suite E, Williamsburg, Virginia 23188  
Phone: (757) 565-1677 Fax: (757) 565-0782  
web: landtechresources.com

SHEET 8 OF 9

JCC-S-22-0005



LEGEND  
UNDISTURBED NATURAL OPEN SPACE  
COMMON NATURAL OPEN SPACE

MATCHLINE SHEET 7

9 Large/Small Plat(s) Recorded  
herewith as # 202301310

City of Williamsburg & County of James City  
Circuit Court: This PLAT was recorded on  
Feb 6, 2023  
at 8:57 AM, PG 1 PG 1  
Document # 202301310  
MONA A. FOLEY, CLERK  
Mona A. Foley, Clerk