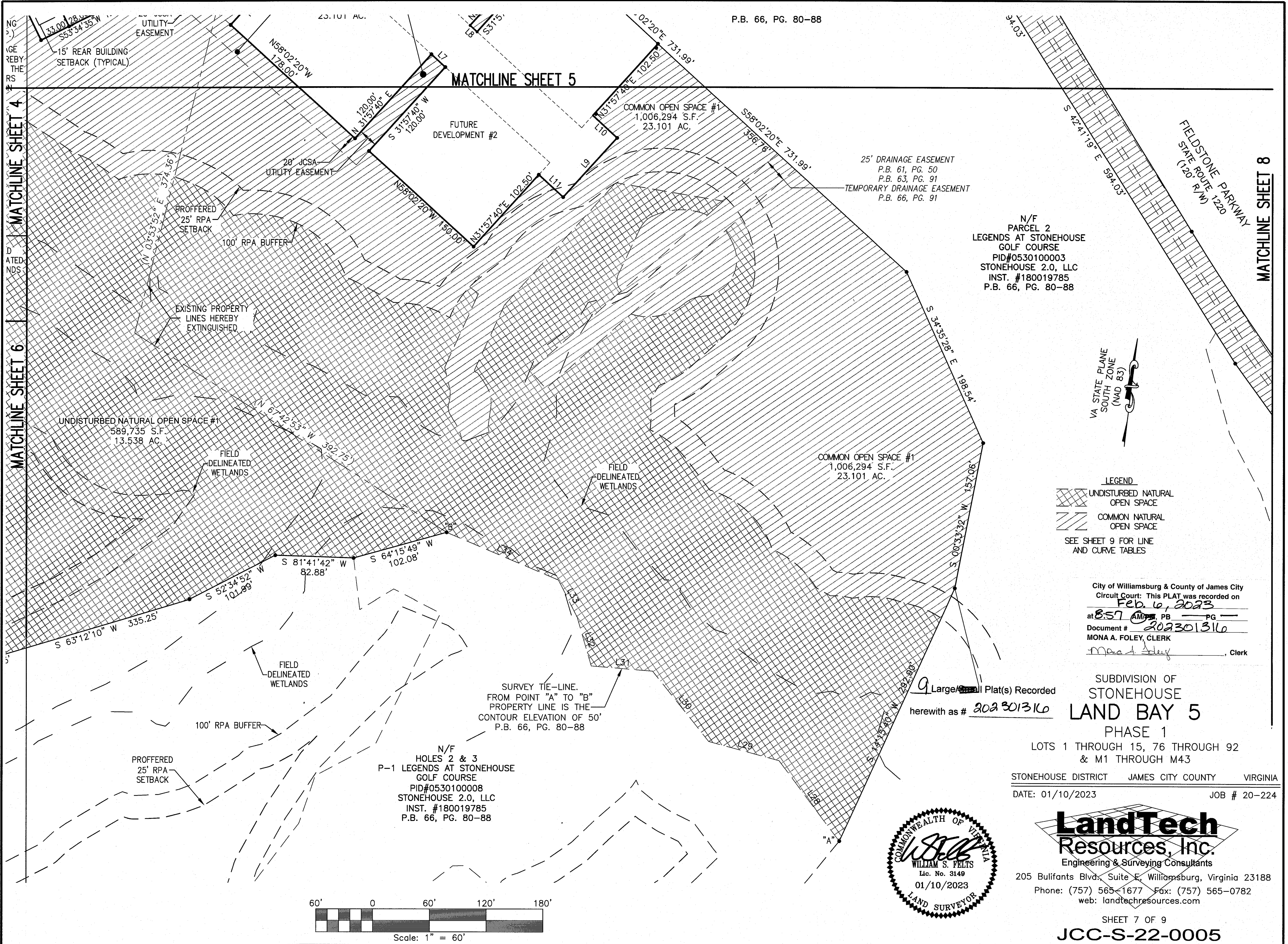
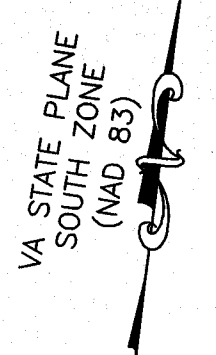


202301316

P.B. 66, PG. 80-88



N/F
PARCEL 2
LEGENDS AT STONEHOUSE
GOLF COURSE
PID#0530100003
STONEHOUSE 2.0, LLC
INST. #180019785
P.B. 66, PG. 80-88



LEGEND
 UNDISTURBED NATURAL OPEN SPACE
 COMMON NATURAL OPEN SPACE
 SEE SHEET 9 FOR LINE AND CURVE TABLES

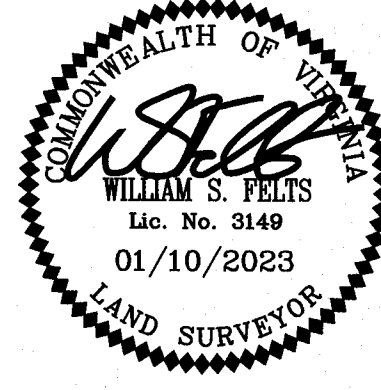
City of Williamsburg & County of James City
Circuit Court: This PLAT was recorded on
Feb. 6, 2023
at **8:57 AM**, PB **PG**
Document # **202301316**
MONA A. FOLEY, CLERK
Mona A. Foley, Clerk

9 Large Plats Recorded
herewith as # **202301316**

SUBDIVISION OF
**STONEHOUSE
LAND BAY 5
PHASE 1**

LOTS 1 THROUGH 15, 76 THROUGH 92
& M1 THROUGH M43

STONEHOUSE DISTRICT JAMES CITY COUNTY VIRGINIA
DATE: 01/10/2023 JOB # 20-224



LandTech Resources, Inc.
Engineering & Surveying Consultants
205 Bulifants Blvd., Suite E, Williamsburg, Virginia 23188
Phone: (757) 565-1677 Fax: (757) 565-0782
web: landtechresources.com