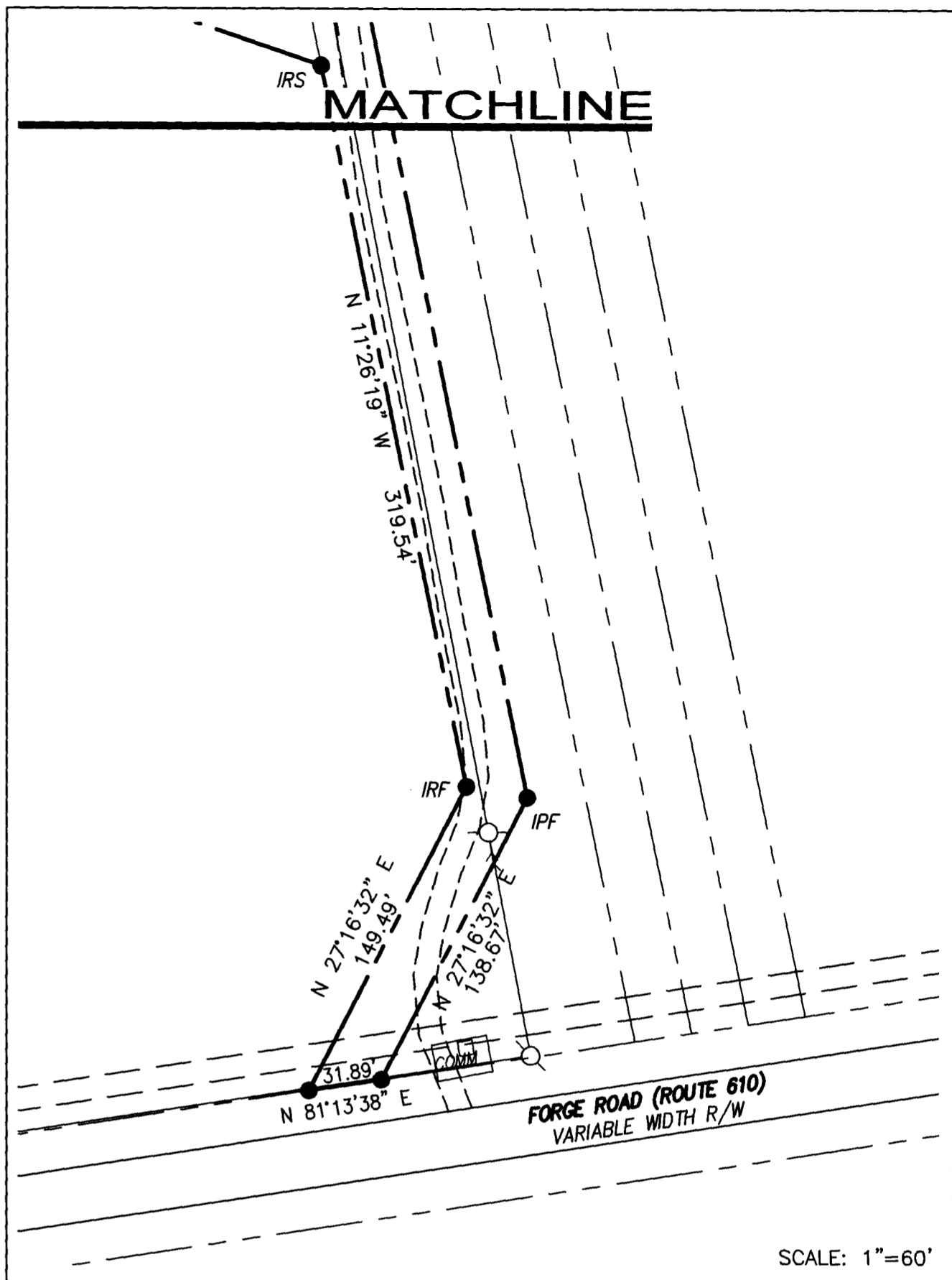
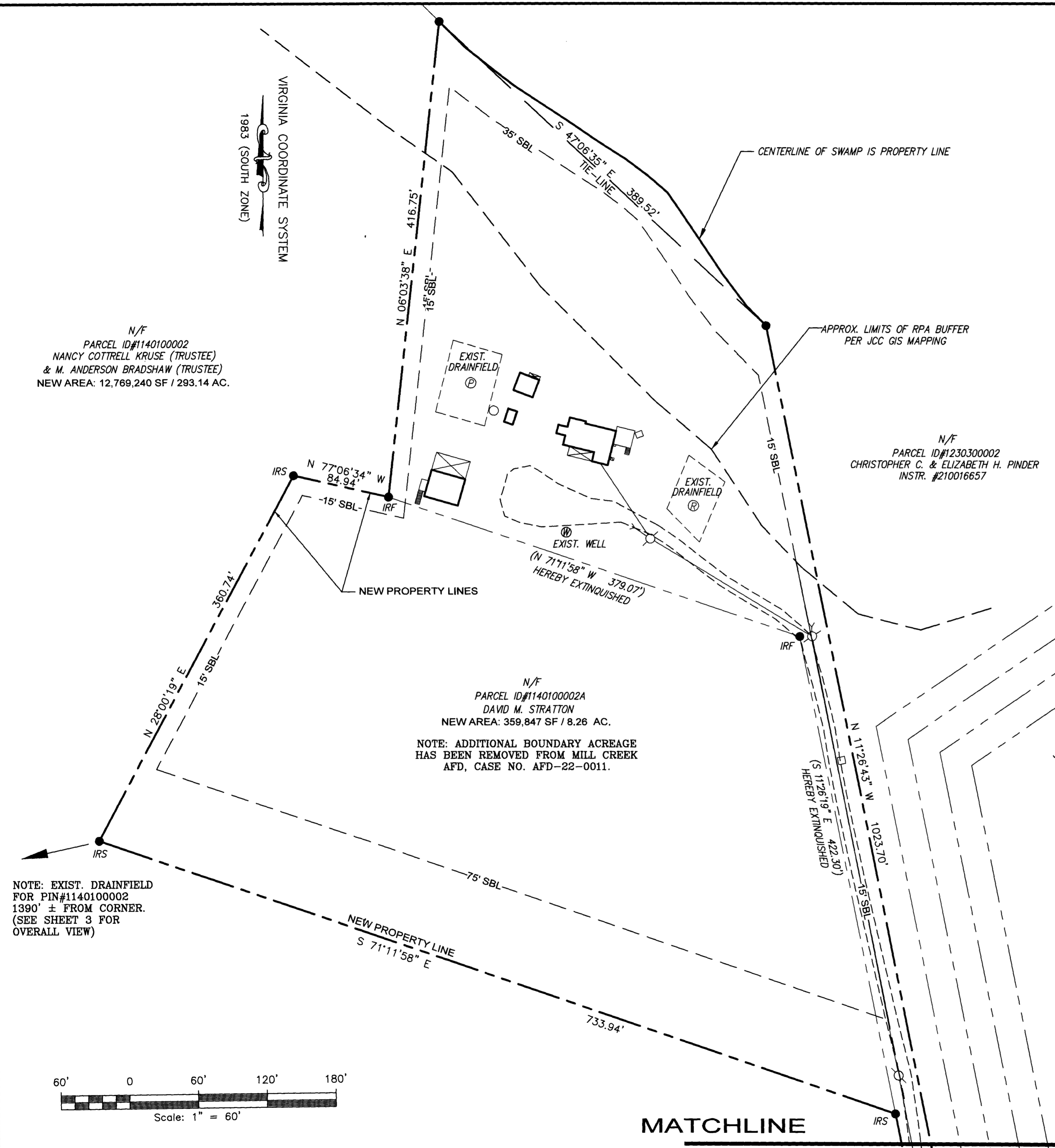


202300296

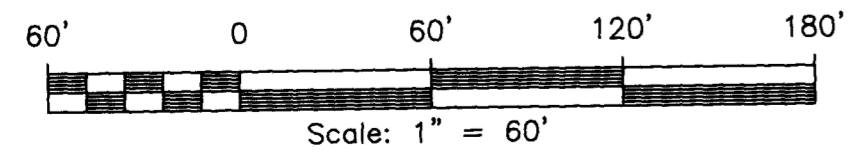


N/F
 PARCEL ID#1140100002
 NANCY COTTRELL KRUSE (TRUSTEE)
 & M. ANDERSON BRADSHAW (TRUSTEE)
 NEW AREA: 12,769,240 SF / 293.14 AC.

N/F
 PARCEL ID#1230300002
 CHRISTOPHER C. & ELIZABETH H. PINDER
 INSTR. #210016657

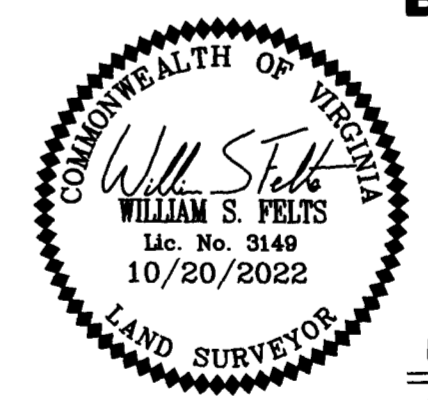
N/F
 PARCEL ID#1140100002A
 DAVID M. STRATTON
 NEW AREA: 359,847 SF / 8.26 AC.
 NOTE: ADDITIONAL BOUNDARY ACREAGE
 HAS BEEN REMOVED FROM MILL CREEK
 AFD, CASE NO. AFD-22-0011.

NOTE: EXIST. DRAINFIELD
 FOR PIN#1140100002
 1390' ± FROM CORNER.
 (SEE SHEET 3 FOR
 OVERALL VIEW)



City of Williamsburg & County of James City
 Circuit Court: This PLAT was recorded on
January 9, 2023
 at 9:42 (AM/PM) PB PG
 Document # 202300296
 MONA A. FOLEY, CLERK
Mona A. Foley, Clerk

3 Large/Small Plat(s) Recorded
 herewith as # 202300296



BOUNDARY LINE ADJUSTMENT
 BETWEEN
LOT 1, JOSEPH M. COTTRELL
SUBDIVISION
(PIN#1140100002A)
 AND
PIN#1140100002

POWHATAN DISTRICT JAMES CITY COUNTY VIRGINIA
 DATE: 10/20/2022 SCALE: 1"=60' JOB # 22-244

LandTech
Resources, Inc.
 Engineering & Surveying Consultants
 205 Bulifants Blvd., Suite E, Williamsburg, Virginia 23188
 Phone: (757) 565-1677 Fax: (757) 565-0782
 web: landtechresources.com