

20223716

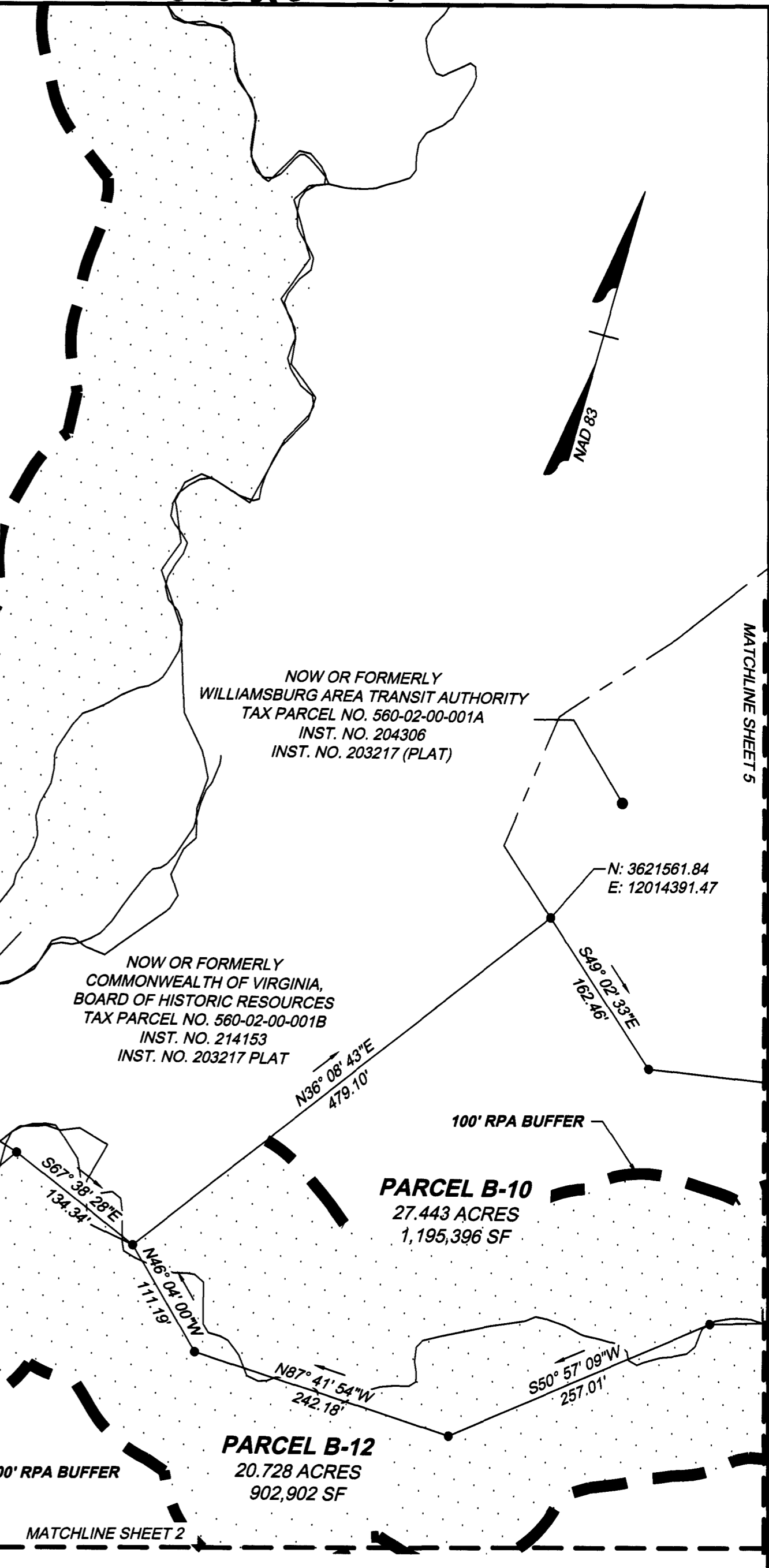
CURVE TABLE							LINE TABLE			LINE TABLE			LINE TABLE		
CURVE	RADIUS	LENGTH	TANGENT	DELTA	CHORD BEARING	CHORD	LINE	BEARING	LENGTH	LINE	BEARING	LENGTH	LINE	BEARING	LENGTH
C1	3000.00'	63.15'	31.58'	1°12'22"	S48°16'30"W	63.15'	L1	N88°00'41"W	106.97'	L27	N75°49'31"W	6.92'	L53	N56°16'43"W	49.19'
C2	476.50'	132.87'	66.87'	15°58'38"	N28°11'02"W	132.44'	L2	N42°35'43"W	16.14'	L28	N71°41'51"E	76.55'	L54	N18°12'34"E	34.32'
C3	476.50'	47.83'	23.93'	5°45'03"	N17°19'11"W	47.81'	L3	N67°56'55"W	26.92'	L29	N28°32'41"E	85.14'	L55	N14°56'36"W	82.06'
C4	523.50'	52.54'	26.29'	5°45'03"	S17°19'11"E	52.52'	L4	N36°10'21"W	137.67'	L30	N3°51'38"E	58.44'	L56	S58°35'12"E	42.49'
C5	523.50'	145.98'	73.47'	15°58'38"	S28°11'02"E	145.51'	L5	N14°26'40"W	230.98'	L31	N2°46'19"W	60.28'	L57	S83°22'16"E	92.45'
C6	2951.00'	240.61'	120.37'	4°40'18"	S58°22'31"W	240.54'	L6	S44°02'49"E	110.27'	L32	N22°38'24"E	82.90'	L58	S24°55'23"W	85.59'
C7	2951.00'	419.35'	210.03'	8°08'31"	S64°46'56"W	419.00'	L7	S67°29'26"E	33.85'	L33	S83°05'21"E	71.55'	L59	N65°04'37"W	171.10'
C8	464.00'	142.10'	71.61'	17°32'47"	N11°21'27"W	141.54'	L8	N75°33'20"E	85.83'	L34	N49°53'46"E	78.34'	L60	N24°55'23"E	5.54'
C9	459.00'	20.91'	10.46'	2°36'37"	N1°18'07"W	20.91'	L9	S14°26'40"E	24.13'	L35	N80°56'45"E	66.27'	L61	N65°04'38"W	143.10'
C10	1743.50'	423.17'	212.63'	13°54'24"	S82°58'30"W	422.14'	L10	S36°10'21"E	128.34'	L36	N37°08'37"E	83.78'	L62	N65°04'38"W	104.76'
C11	125.00'	71.68'	36.86'	32°51'22"	N87°33'00"W	70.70'	L11	S10°44'05"E	41.90'	L37	N30°21'57"E	91.64'	L63	N16°24'10"E	86.45'
C12	61.85'	77.82'	45.01'	72°05'37"	S72°49'53"W	72.79'	L12	S37°42'12"E	18.51'	L38	N19°16'48"E	104.80'	L64	N65°04'38"W	38.34'
C13	125.00'	71.34'	36.67'	32°42'03"	S53°08'06"W	70.38'	L13	S53°19'11"W	30.41'	L39	N32°33'33"E	52.00'	L65	N23°00'19"E	17.57'
C14	1848.50'	619.75'	312.81'	19°12'35"	S59°52'50"W	616.85'	L14	S36°33'38"E	6.09'	L40	N43°27'01"E	35.00'	L66	S49°24'47"E	47.01'
C15	220.00'	100.31'	51.04'	26°07'32"	S63°20'18"W	99.45'	L15	S55°07'28"W	5.50'	L41	S46°32'59"E	35.00'	L67	N40°36'06"E	3.52'
C16	282.00'	304.77'	169.18'	61°55'18"	S45°26'25"W	290.15'	L16	S64°56'06"W	59.19'	L42	S46°32'59"E	60.00'	L68	S49°24'47"E	16.02'
C17	964.50'	115.20'	57.67'	6°50'36"	N72°24'13"W	115.13'	L17	S49°45'57"W	79.37'	L43	S43°27'01"W	50.00'	L69	N7°02'55"W	47.75'
C18	2325.55'	55.30'	27.65'	1°21'44"	N69°39'47"W	55.29'	L18	N69°48'17"E	47.00'	L44	N46°32'59"W	60.00'	L70	S78°32'00"E	74.18'
C19	859.50'	396.16'	201.66'	26°24'31"	S62°37'16"E	392.66'	L19	S89°59'48"E	5.00'	L45	N43°27'01"E	15.00'	L71	N3°48'54"W	47.51'
C20	60.00'	102.35'	68.70'	97°43'57"	S0°32'48"E	90.38'	L20	N0°00'12"E	41.10'	L46	N46°32'59"W	35.00'	L72	N3°08'14"W	55.79'
C21	1169.00'	712.25'	367.57'	34°54'34"	S65°46'28"W	701.29'	L21	N89°59'48"W	10.00'	L47	S53°08'19"W	50.72'	L73	N9°05'04"E	108.90'
C22	1749.00'	344.22'	172.67'	11°16'35"	S88°52'02"W	343.67'	L22	N89°59'48"W	86.63'	L48	S68°23'44"W	24.47'	L74	N56°01'15"E	47.58'
C23	1469.00'	388.81'	195.55'	15°09'53"	N77°54'43"W	387.68'	L23	N89°55'42"E	10.00'	L49	S30°26'56"W	61.21'	L75	S89°18'06"E	96.92'
C24	800.00'	191.32'	96.12'	13°42'08"	N77°10'51"W	190.86'	L24	N0°00'12"E	28.50'	L50	N4°20'45"E	71.37'	L76	N68°06'05"E	89.41'
C25	1000.00'	62.29'	31.15'	3°34'07"	N85°48'59"W	62.28'	L25	S89°55'42"W	10.00'	L51	N15°53'17"E	41.92'			
C26	569.50'	28.02'	14.01'	2°49'09"	S62°59'22"E	28.02'	L26	N0°00'12"E	52.81'	L52	N15°53'17"E	58.08'			
C27	1039.50'	124.16'	62.15'	6°50'36"	N72°24'13"W	124.08'									
C28	2250.55'	181.29'	90.70'	4°36'58"	N71°17'22"W	181.24'									
C29	2250.55'	33.83'	16.91'	0°51'40"	N74°01'40"W	33.83'									
C30	1039.50'	50.08'	25.04'	2°45'37"	N73°04'42"W	50.07'									
C31	964.50'	106.43'	53.27'	6°19'21"	S71°00'05"E	106.37'									

Y:\1909\42335-909 Quarterpath Overall\DWG\Sheet\Plat\42335V\_909-PLSUBD-02.dwg | Plotted on 11/7/2022 9:21 AM | by Johnathon Supnet

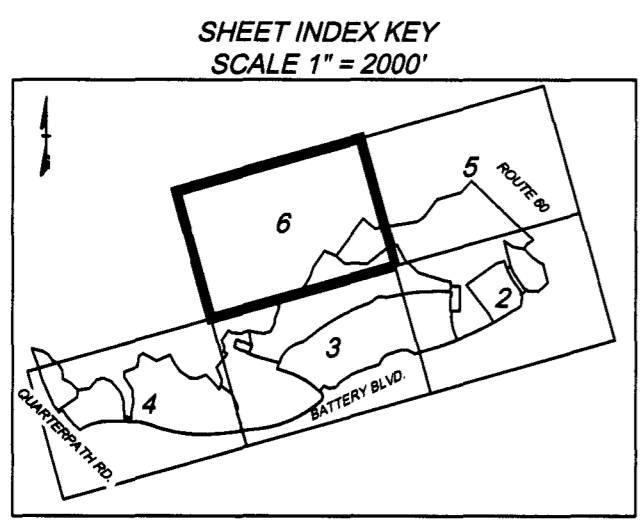
THIS DRAWING PREPARED AT THE  
 HANFORD ROAD PERMITTING OFFICE  
 11531 Road 11531, Williamsburg, VA 23066  
 TEL: 757.782.3041 www.hanford.com

YOUR VISION ACHIEVED THROUGH OURS.

Site Development | Residential | Infrastructure | Technology

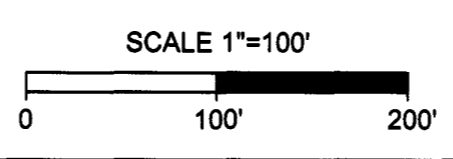


**TIMMONS GROUP**



Large/Small Plat(s) Recorded  
 herewith as # 20223716

City of Williamsburg & County of James City  
 Circuit Court: This PLAT was recorded on  
December 14, 2022  
 at 2:28 AM PM PG  
 Document # 20223716  
 MONA A. FOLEY, CLERK  
Mona A. Foley, Clerk



SUBDIVISION  
 OF  
**RESIDUAL PARCEL B**  
**QUARTERPATH AT WILLIAMSBURG**  
**SECTION 1**  
 CREATING PARCELS B-6, B-7, B-8, B-9, B-10, B-11, & B-12

City of Williamsburg	Virginia
DATE: Aug. 29, 2022	SCALE: 1" = 100'
SHEET 6 OF 8	J.N.: 42335
DRAWN BY: C. McKibbin	CHECK BY: R. Mann
Revised: 9/23/2022	