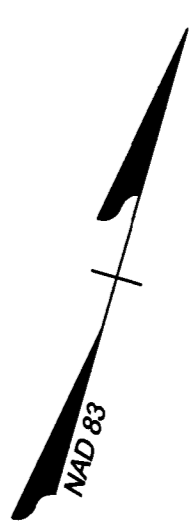
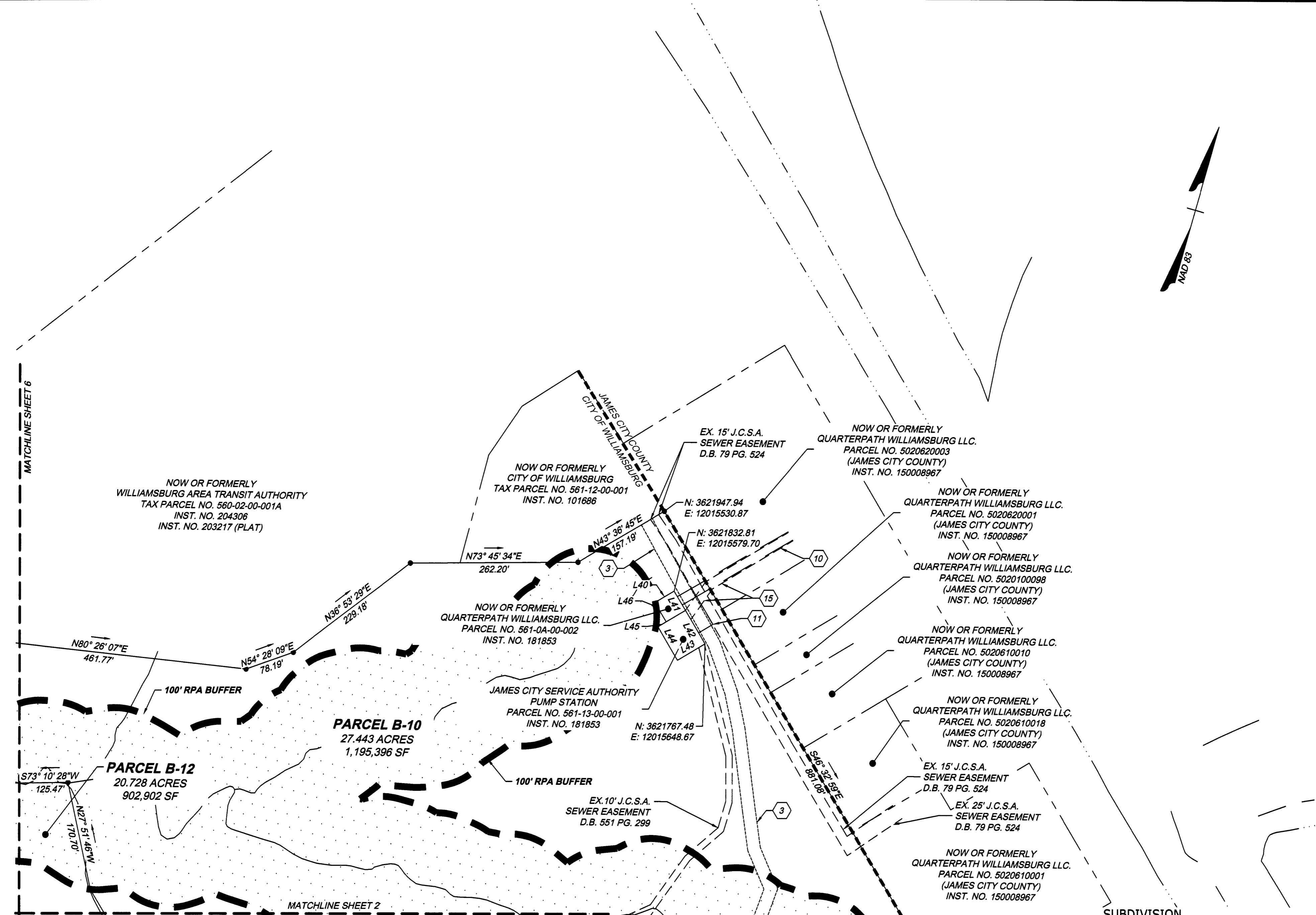


20223716

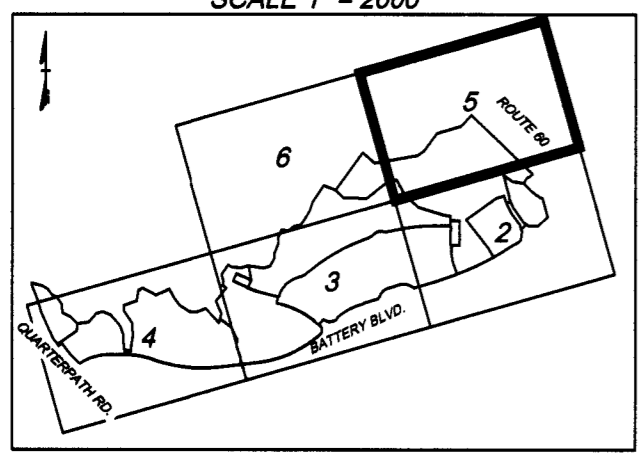
Y:\909\42335-909 Quarterpath Overall\DWG\Sheet\Plat\42335V_909-PLSUBD-02.dwg | Plotted on 11/7/2022 9:21 AM | by Johnathon Supnet



MATCHLINE SHEET 6

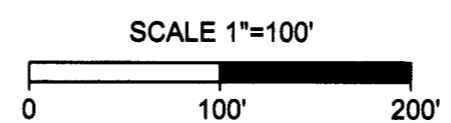
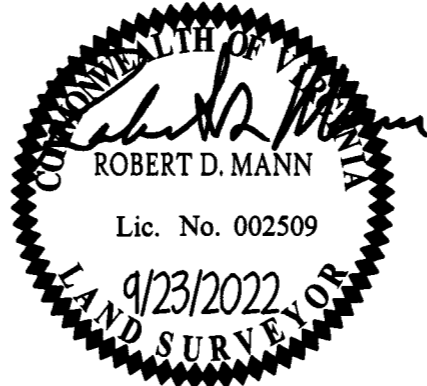
MATCHLINE SHEET 2

SHEET INDEX KEY
SCALE 1" = 2000'



80 Large/Small Plat(s) Recorded
herewith as # 20223716

City of Williamsburg & County of James City
Circuit Court: This PLAT was recorded on
December 14, 2022
at 2:20 AM/PM, PB PG
Document # 20223716
MONA A. FOLEY, CLERK
Mona A. Foley, Clerk



SUBDIVISION
OF
**RESIDUAL PARCEL B
QUARTERPATH AT WILLIAMSBURG
SECTION 1**
CREATING PARCELS B-6, B-7, B-8, B-9, B-10, B-11, & B-12

City of Williamsburg	Virginia
DATE: <u>Aug. 29, 2022</u>	SCALE: <u>1" = 100'</u>
SHEET <u>5</u> OF <u>8</u>	J.N.: <u>42335</u>
DRAWN BY: <u>C. McKibbin</u>	CHECK BY: <u>R. Mann</u>
Revised: <u>9/23/2022</u>	

YOUR VISION ACHIEVED THROUGH OURS.

Site Development | Residential | Infrastructure | Technology

THIS DRAWING PREPARED BY THE
LAND SURVEYING DIVISION OF THE
JAMES CITY COUNTY ENGINEERING OFFICE
11832 Rock Landing Drive, Suite 205 | Newport News, VA 23606
TEL: 757-762-5911 | www.jccoe.com

TIMMONS GROUP