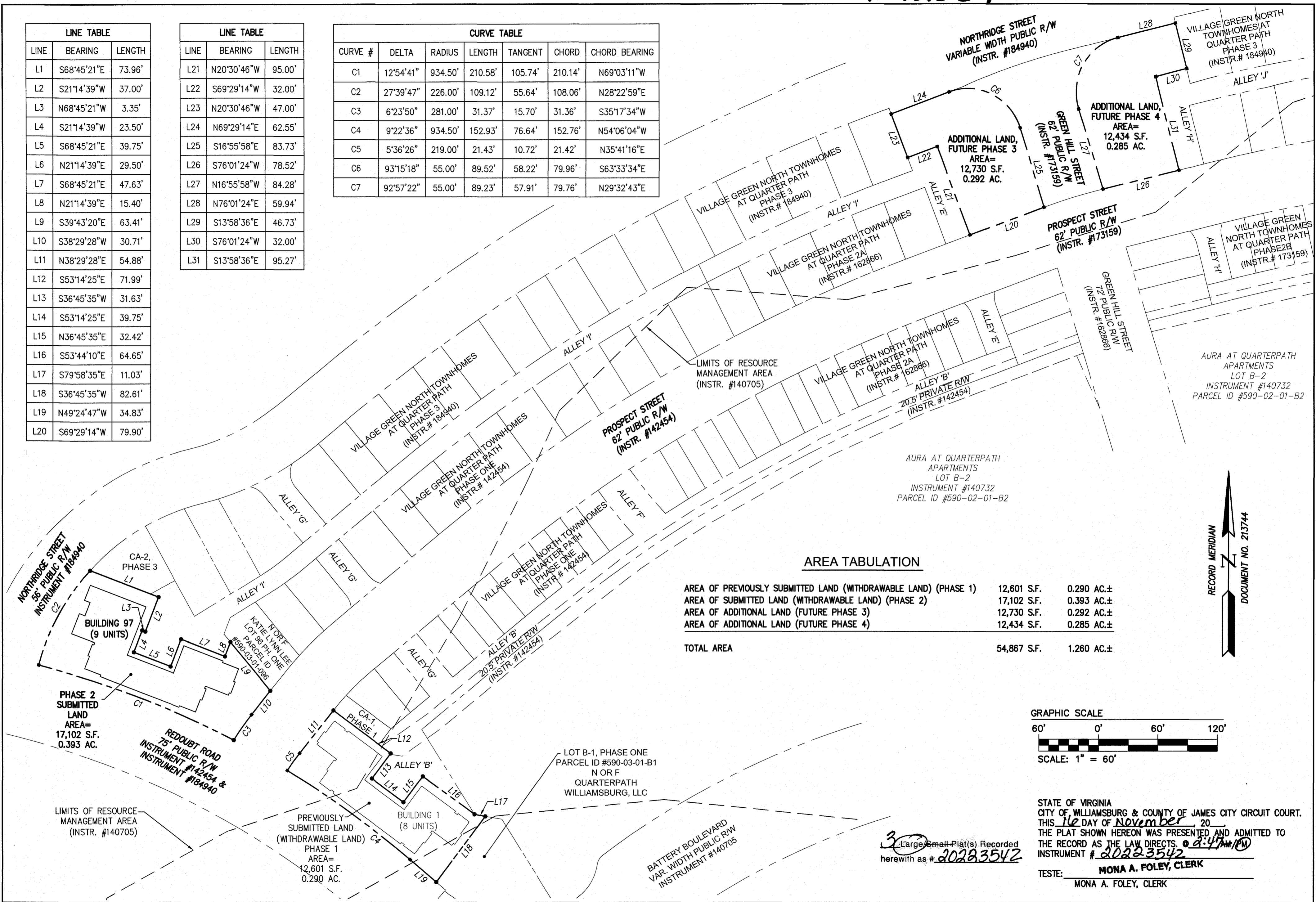


20223542

LINE	BEARING	LENGTH
L1	S68°45'21"E	73.96'
L2	S21°14'39"W	37.00'
L3	N68°45'21"W	3.35'
L4	S21°14'39"W	23.50'
L5	S68°45'21"E	39.75'
L6	N21°14'39"E	29.50'
L7	S68°45'21"E	47.63'
L8	N21°14'39"E	15.40'
L9	S39°43'20"E	63.41'
L10	S38°29'28"W	30.71'
L11	N38°29'28"E	54.88'
L12	S53°14'25"E	71.99'
L13	S36°45'35"W	31.63'
L14	S53°14'25"E	39.75'
L15	N36°45'35"E	32.42'
L16	S53°44'10"E	64.65'
L17	S79°58'35"E	11.03'
L18	S36°45'35"W	82.61'
L19	N49°24'47"W	34.83'
L20	S69°29'14"W	79.90'

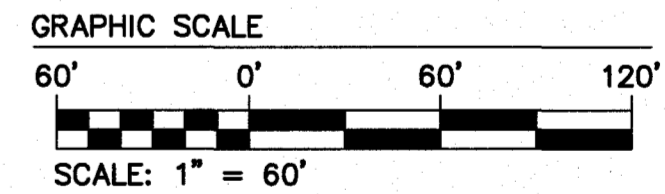
LINE	BEARING	LENGTH
L21	N20°30'46"W	95.00'
L22	S69°29'14"W	32.00'
L23	N20°30'46"W	47.00'
L24	N69°29'14"E	62.55'
L25	S16°55'58"E	83.73'
L26	S76°01'24"W	78.52'
L27	N16°55'58"W	84.28'
L28	N76°01'24"E	59.94'
L29	S13°58'36"E	46.73'
L30	S76°01'24"W	32.00'
L31	S13°58'36"E	95.27'

CURVE #	DELTA	RADIUS	LENGTH	TANGENT	CHORD	CHORD BEARING
C1	12°54'41"	934.50'	210.58'	105.74'	210.14'	N69°03'11"W
C2	27°39'47"	226.00'	109.12'	55.64'	108.06'	N28°22'59"E
C3	6°23'50"	281.00'	31.37'	15.70'	31.36'	S35°17'34"W
C4	9°22'36"	934.50'	152.93'	76.64'	152.76'	N54°06'04"W
C5	5°36'26"	219.00'	21.43'	10.72'	21.42'	N35°41'16"E
C6	93°15'18"	55.00'	89.52'	58.22'	79.96'	S63°33'34"E
C7	92°57'22"	55.00'	89.23'	57.91'	79.76'	N29°32'43"E

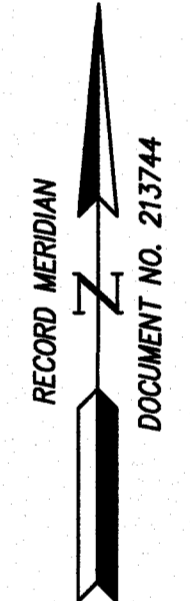


AREA TABULATION

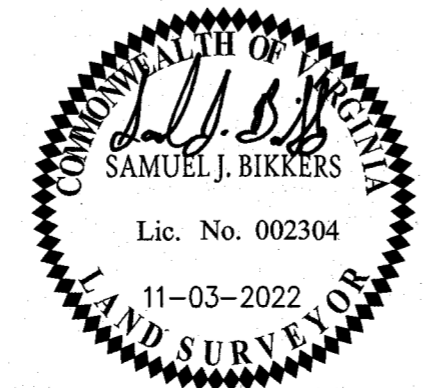
AREA OF PREVIOUSLY SUBMITTED LAND (WITHDRAWABLE LAND) (PHASE 1)	12,601 S.F.	0.290 AC.±
AREA OF SUBMITTED LAND (WITHDRAWABLE LAND) (PHASE 2)	17,102 S.F.	0.393 AC.±
AREA OF ADDITIONAL LAND (FUTURE PHASE 3)	12,730 S.F.	0.292 AC.±
AREA OF ADDITIONAL LAND (FUTURE PHASE 4)	12,434 S.F.	0.285 AC.±
TOTAL AREA	54,867 S.F.	1.260 AC.±



STATE OF VIRGINIA
 CITY OF WILLIAMSBURG & COUNTY OF JAMES CITY CIRCUIT COURT.
 THIS 16 DAY OF November, 2022
 THE PLAT SHOWN HEREON WAS PRESENTED AND ADMITTED TO
 THE RECORD AS THE LAW DIRECTS. 0 9:47 AM
 INSTRUMENT # 20223542
 TESTE: **MONA A. FOLEY, CLERK**
 MONA A. FOLEY, CLERK



SURVEYOR'S CERTIFICATE
 I, SAMUEL J. BIKKERS, A DULY LICENSED LAND SURVEYOR IN THE COMMONWEALTH OF VIRGINIA, DO HEREBY CERTIFY THAT THIS PLAT IS ACCURATE AND COMPLIES WITH SECTION 55.1-1920(A) OF THE VIRGINIA CONDOMINIUM ACT AS AMENDED, AND THAT ALL UNITS OR PORTIONS OF SUCH UNITS SHOWN HEREON ARE SUBSTANTIALLY COMPLETE.
 SAMUEL J. BIKKERS, L.S. #002304
 11-03-2022
 DATE



AES
 CONSULTING ENGINEERS
 5248 Olde Towne Road, Suite 1
 Williamsburg, Virginia 23188
 Phone: (757) 253-0040
 Fax: (757) 220-8994
 www.aesva.com

EXHIBIT C
 CONDOMINIUM PLAT SHOWING PHASE 2
 SUBMITTED LAND AND EXISTING EASEMENTS
**VILLAGE GREEN NORTH AT
 QUARTERPATH CONDOMINIUM**
 CITY OF WILLIAMSBURG VIRGINIA

Project Contacts:	GVC / SJB
Project Number:	W10219-12
Scale:	1" = 60'
Date:	11-03-2022
Sheet Number	3 OF 3

S:\026\W10219-12-Land Condominium\Survey\Plan\Phase2\Condominium Plat 97 Lvs 97-101\W1021912_Condo_Land97-101_Overall.dwg, 11/03/2022 2:56:27 PM, Sam Bickers