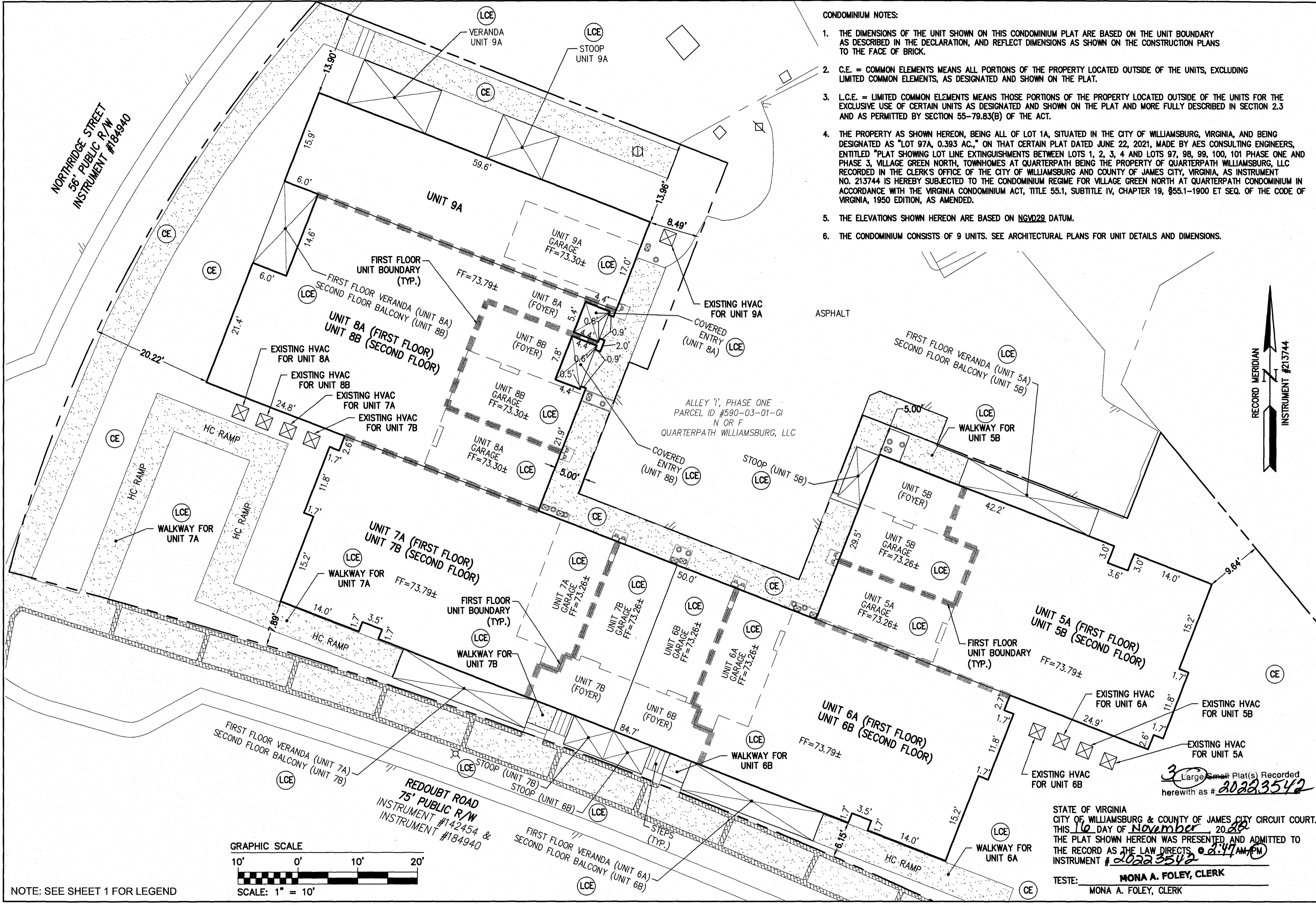


20223542

CONDOMINIUM NOTES:

1. THE DIMENSIONS OF THE UNIT SHOWN ON THIS CONDOMINIUM PLAT ARE BASED ON THE UNIT BOUNDARY AS DESCRIBED IN THE DECLARATION, AND REFLECT DIMENSIONS AS SHOWN ON THE CONSTRUCTION PLANS TO THE FACE OF BRICK.
2. C.E. = COMMON ELEMENTS MEANS ALL PORTIONS OF THE PROPERTY LOCATED OUTSIDE OF THE UNITS, EXCLUDING LIMITED COMMON ELEMENTS, AS DESIGNATED AND SHOWN ON THE PLAT.
3. L.C.E. = LIMITED COMMON ELEMENTS MEANS THOSE PORTIONS OF THE PROPERTY LOCATED OUTSIDE OF THE UNITS FOR THE EXCLUSIVE USE OF CERTAIN UNITS AS DESIGNATED AND SHOWN ON THE PLAT AND MORE FULLY DESCRIBED IN SECTION 2.3 AND AS PERMITTED BY SECTION 55-79.83(B) OF THE ACT.
4. THE PROPERTY AS SHOWN HEREON, BEING ALL OF LOT 1A, SITUATED IN THE CITY OF WILLIAMSBURG, VIRGINIA, AND BEING DESIGNATED AS "LOT 97A, 0.393 AC.," ON THAT CERTAIN PLAT DATED JUNE 22, 2021, MADE BY AES CONSULTING ENGINEERS, ENTITLED "PLAT SHOWING LOT LINE EXTINGUISHMENTS BETWEEN LOTS 1, 2, 3, 4 AND LOTS 97, 98, 99, 100, 101 PHASE ONE AND PHASE 3, VILLAGE GREEN NORTH, TOWNHOMES AT QUARTERPATH BEING THE PROPERTY OF QUARTERPATH WILLIAMSBURG, LLC RECORDED IN THE CLERK'S OFFICE OF THE CITY OF WILLIAMSBURG AND COUNTY OF JAMES CITY, VIRGINIA, AS INSTRUMENT NO. 213744 IS HEREBY SUBJECTED TO THE CONDOMINIUM REGIME FOR VILLAGE GREEN NORTH AT QUARTERPATH CONDOMINIUM IN ACCORDANCE WITH THE VIRGINIA CONDOMINIUM ACT, TITLE 55.1, SUBTITLE IV, CHAPTER 19, §55.1-1900 ET SEQ. OF THE CODE OF VIRGINIA, 1950 EDITION, AS AMENDED.
5. THE ELEVATIONS SHOWN HEREON ARE BASED ON NGVD28 DATUM.
6. THE CONDOMINIUM CONSISTS OF 9 UNITS. SEE ARCHITECTURAL PLANS FOR UNIT DETAILS AND DIMENSIONS.

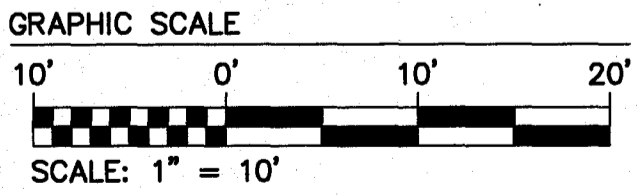


NORTHBRIDGE STREET
56' PUBLIC R/W
INSTRUMENT #184940

RECORD MERIDIAN
INSTRUMENT #213744

ALLEY 'I', PHASE ONE
PARCEL ID #590-03-01-G1
N OR F
QUARTERPATH WILLIAMSBURG, LLC

REDOUBT ROAD
75' PUBLIC R/W
INSTRUMENT #142454 &
INSTRUMENT #184940



NOTE: SEE SHEET 1 FOR LEGEND

3 Large Small Plat(s) Recorded
herewith as # 20223542

STATE OF VIRGINIA
CITY OF WILLIAMSBURG & COUNTY OF JAMES CITY CIRCUIT COURT.
THIS 16 DAY OF November 2022
THE PLAT SHOWN HEREON WAS PRESENTED AND ADMITTED TO
THE RECORD AS THE LAW DIRECTS. @ 2:47 AM PM
INSTRUMENT # 20223542

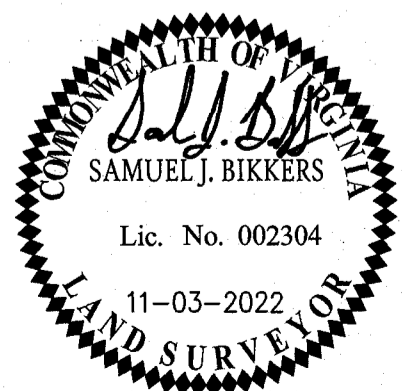
TESTE: MONA A. FOLEY, CLERK
MONA A. FOLEY, CLERK

SURVEYOR'S CERTIFICATE

I, SAMUEL J. BIKKERS, A DULY LICENSED LAND SURVEYOR IN THE COMMONWEALTH OF VIRGINIA, DO HEREBY CERTIFY THAT THIS PLAT IS ACCURATE AND COMPLIES WITH SECTION 55.1-1920(A) OF THE VIRGINIA CONDOMINIUM ACT AS AMENDED, AND THAT ALL UNITS OR PORTIONS OF SUCH UNITS SHOWN HEREON ARE SUBSTANTIALLY COMPLETE.

S.J. Bickers
SAMUEL J. BIKKERS, L.S. #002304

11-03-2022
DATE



5248 Olde Towne Road, Suite 1
Williamsburg, Virginia 23188
Phone: (757) 253-0040
Fax: (757) 220-8994
www.aesva.com

Hampton Roads | Central Virginia | Middle Peninsula

EXHIBIT C
CONDOMINIUM PLAT SHOWING PHASE 2
SUBMITTED LAND AND EXISTING EASEMENTS
**VILLAGE GREEN NORTH AT
QUARTERPATH CONDOMINIUM**

CITY OF WILLIAMSBURG VIRGINIA

Project Contacts:	GVC / SJB
Project Number:	W10219-12
Scale:	1" = 10'
Date:	11-03-2022
Sheet Number	

2 OF 3

S:\CDS\11021912 - Land Condominium\Survey\Phase\Plat\Condominium\Bkg 97 Lots 97-101\11021912_Condos_Land97-101_Bkg97.dwg, 11/03/2022 2:56:05 PM, Sam.Bickers