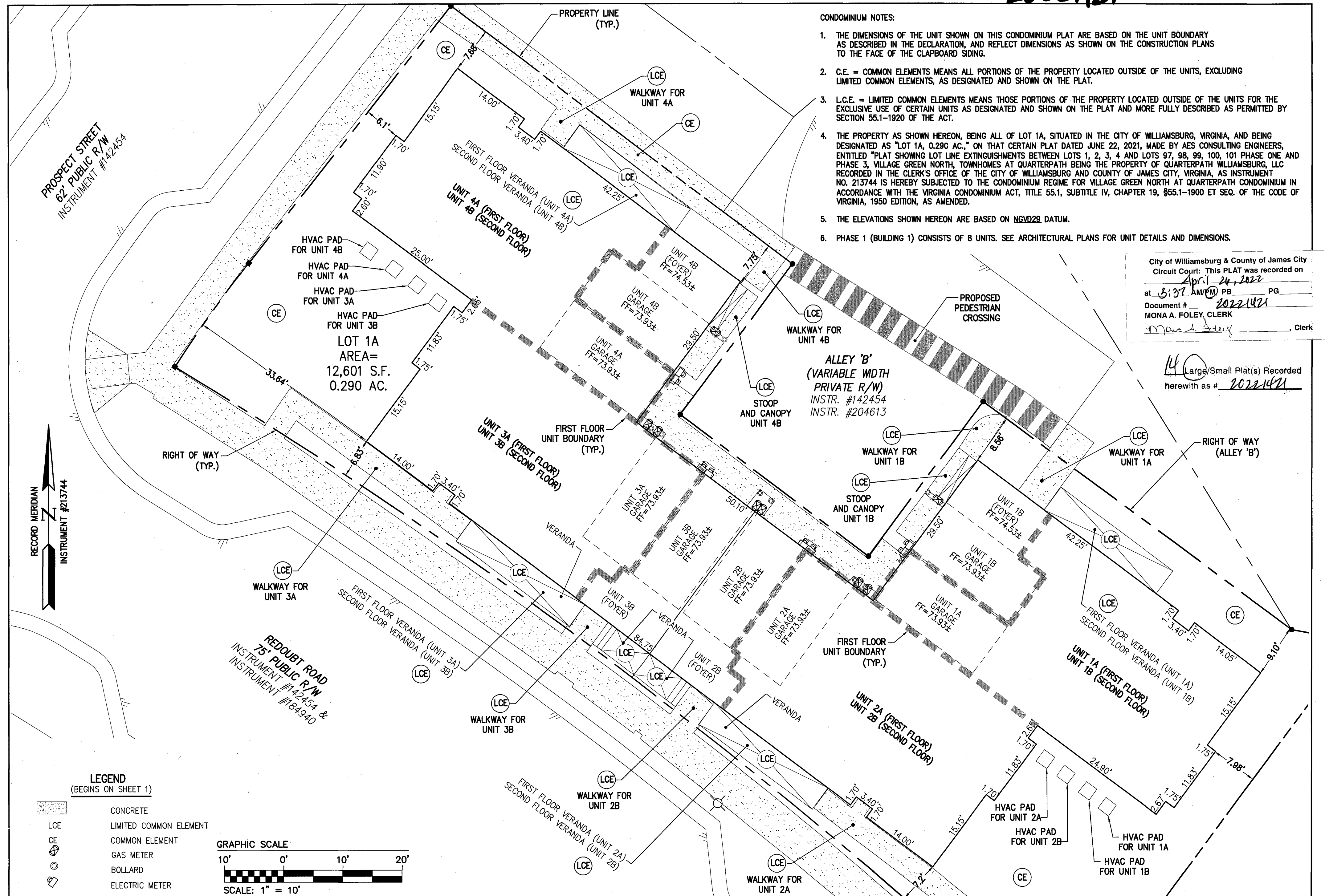


20221421

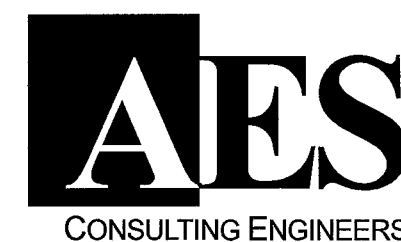
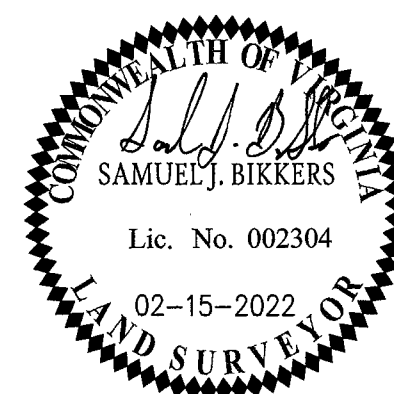


**SURVEYOR'S CERTIFICATE**

I, SAMUEL J. BIKKERS, A DULY LICENSED LAND SURVEYOR IN THE COMMONWEALTH OF VIRGINIA, DO HEREBY CERTIFY THAT THIS PLAT IS ACCURATE AND COMPLIES WITH SECTION 55.1-1920(A) OF THE VIRGINIA CONDOMINIUM ACT AS AMENDED, AND THAT ALL UNITS OR PORTIONS OF SUCH UNITS SHOWN HEREON ARE SUBSTANTIALLY COMPLETE.

SAMUEL J. BIKKERS, L.S. #002304

2-15-2022  
DATE



Hampton Roads | Central Virginia | Middle Peninsula

5248 Olde Towne Road, Suite 1  
Williamsburg, Virginia 23188  
Phone: (757) 253-0040  
Fax: (757) 220-8994  
www.aesva.com

**EXHIBIT C**  
CONDOMINIUM PLAT SHOWING PHASE 1  
SUBMITTED LAND AND EXISTING EASEMENTS  
**VILLAGE GREEN NORTH AT  
QUARTERPATH CONDOMINIUM**

CITY OF WILLIAMSBURG

VIRGINIA

Project Contacts:	GVC / SJB
Project Number:	W10219-12
Scale:	Date:
1" = 10'	02-15-2022
Sheet Number	
2 OF 3	