

202212899

2 Large/Small Plat(s) Recorded
herewith as # 202212899

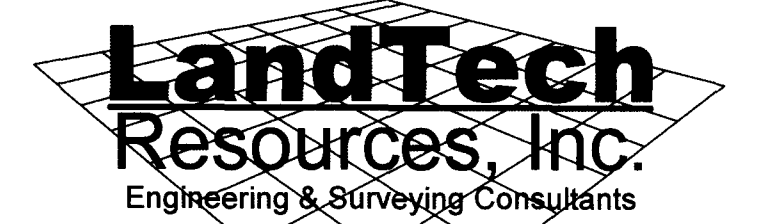
City of Williamsburg & County of James City
Circuit Court: This PLAT was recorded on
at 2:18 AM/PM PB PG
August 24, 2022
Document # 202212899
MONA A. FOLEY, CLERK
Mona A. Foley, Clerk

SUBDIVISION OF
STONEHOUSE TRACT 3
PARCEL "B" SECTION 4
LOT 1

STONEHOUSE DISTRICT JAMES CITY COUNTY VIRGINIA

DATE: 07/22/2022

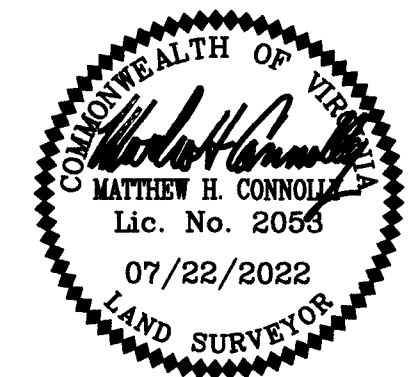
JOB # 17-378



Engineering & Surveying Consultants
205 Bulifants Blvd., Suite E, Williamsburg, Virginia 23188
Phone: (757) 565-1677 Fax: (757) 565-0782
web: landtechresources.com

SHEET 2 OF 2

JCC-S-21-0076



LINE	BEARING	DISTANCE
L1	N 02°48'41" E	56.48'
L2	S 79°56'25" E	11.53'
L3	S 08°02'13" E	6.48'
L4	S 81°47'05" W	6.02'
L5	N 88°49'57" W	6.00'
L6	S 00°59'21" W	5.00'
L7	S 20°15'23" W	61.57'
L8	N 02°48'41" E	59.51'

CURVE	RADIUS	ARC LENGTH	TANGENT	CHORD LENGTH	CHORD BEARING	DELTA ANGLE
C1	528.00'	32.05'	16.03'	32.05'	S 81°40'46" E	3°28'42"
C2	34.00'	6.78'	3.40'	6.77'	S 77°42'13" E	11°25'48"
C3	34.00'	36.69'	20.36'	34.94'	N 41°04'13" W	61°50'11"
C4	797.00'	130.64'	65.47'	130.49'	S 03°31'42" E	9°23'30"
C5	797.00'	30.01'	15.01'	30.01'	S 09°18'10" E	2°09'28"
C6	727.00'	125.83'	63.07'	125.67'	S 05°25'24" E	9°55'01"
C7	638.00'	62.22'	31.14'	62.20'	N 81°31'42" W	5°35'16"
C8	357.03'	110.50'	55.70'	110.06'	N 11°40'40" E	17°43'58"
C9	797.00'	265.53'	134.01'	264.31'	S 10°42'43" W	19°05'20"
C10	258.73'	79.57'	40.10'	79.26'	N 29°21'19" E	17°37'16"
C11	638.00'	4.78'	2.39'	4.78'	S 84°06'27" E	0°25'46"
C12	34.00'	42.85'	24.80'	40.07'	S 36°54'53" W	72°12'29"

