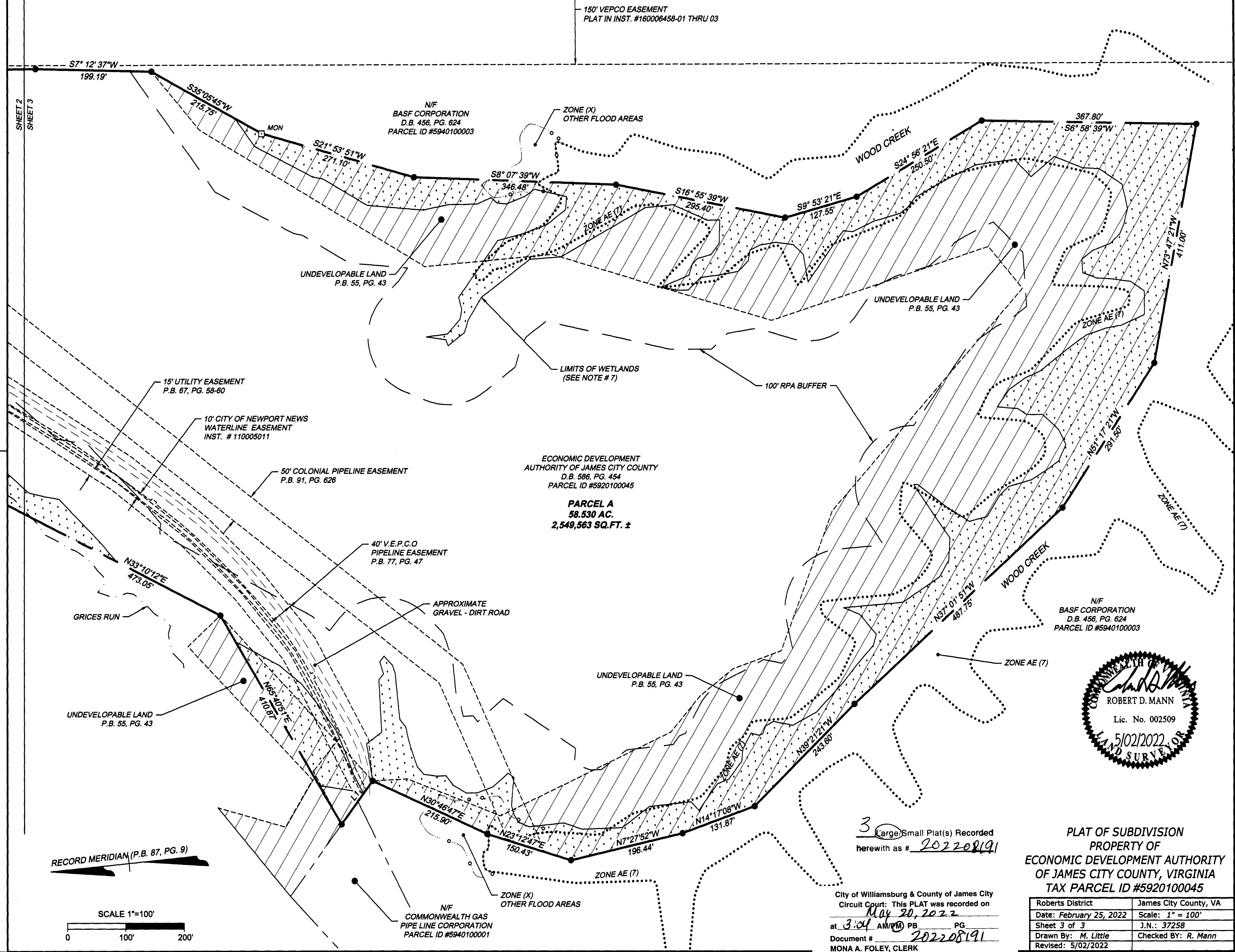


202208191

SHEET 2
SHEET 3



150' VEPCO EASEMENT
PLAT IN INST. #160006458-01 THRU 03

N/F
BASF CORPORATION
D.B. 456, PG. 624
PARCEL ID #5940100003

UNDEVELOPABLE LAND
P.B. 55, PG. 43

LIMITS OF WETLANDS
(SEE NOTE # 7)

100' RPA BUFFER

15' UTILITY EASEMENT
P.B. 67, PG. 58-60

10' CITY OF NEWPORT NEWS
WATERLINE EASEMENT
INST. # 110005011

50' COLONIAL PIPELINE EASEMENT
P.B. 91, PG. 626

ECONOMIC DEVELOPMENT
AUTHORITY OF JAMES CITY COUNTY
D.B. 586, PG. 454
PARCEL ID #5920100045

PARCEL A
58.530 AC.
2,549,563 SQ.FT. ±

40' V.E.P.C.O
PIPELINE EASEMENT
P.B. 77, PG. 47

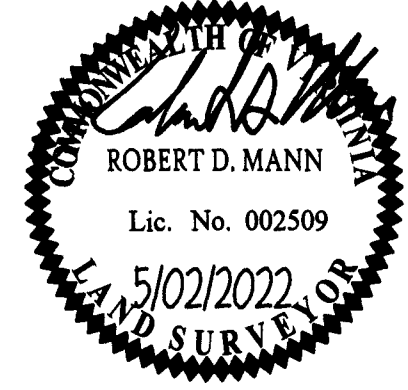
APPROXIMATE
GRAVEL - DIRT ROAD

GRICES RUN

UNDEVELOPABLE LAND
P.B. 55, PG. 43

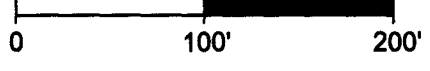
UNDEVELOPABLE LAND
P.B. 55, PG. 43

N/F
BASF CORPORATION
D.B. 456, PG. 624
PARCEL ID #5940100003



RECORD MERIDIAN (P.B. 87, PG. 9)

SCALE 1"=100'



N/F
COMMONWEALTH GAS
PIPE LINE CORPORATION
PARCEL ID #5940100001

3 Large Small Plat(s) Recorded
herewith as # 202208191

City of Williamsburg & County of James City
Circuit Court: This PLAT was recorded on
May 20, 2022
at 3:04 AM/PM PG. PG
Document # 202208191
MONA A. FOLEY, CLERK
Mona A. Foley, Clerk

PLAT OF SUBDIVISION
PROPERTY OF
ECONOMIC DEVELOPMENT AUTHORITY
OF JAMES CITY COUNTY, VIRGINIA
TAX PARCEL ID #5920100045

Roberts District	James City County, VA
Date: February 25, 2022	Scale: 1" = 100'
Sheet 3 of 3	J.N.: 37258
Drawn By: M. Little	Checked By: R. Mann
Revised: 5/02/2022	

YOUR VISION ACHIEVED THROUGH OURS.
11832 Rock Landing Drive, Suite 305 | Newport News, VA 23606
TEL: 757.762.3041 | www.timmons.com

TIMMONS GROUP

Site Development Residential Infrastructure Technology