

202207392

CURVE TABLE						
CURVE #	DELTA	RADIUS	LENGTH	TANGENT	CHORD	CHORD BEARING
C1	2°47'49"	226.50'	11.06'	5.53'	11.06'	N2°32'12"E
C2	2°47'49"	176.50'	8.62'	4.31'	8.61'	N2°32'12"E
C3	90°00'00"	20.00'	31.42'	20.00'	28.28'	N48°56'07"E
C4	86°15'51"	176.50'	265.74'	165.35'	241.34'	S41°59'38"E
C5	0°56'20"	176.50'	2.89'	1.45'	2.89'	S85°35'43"E
C6	13°13'45"	176.50'	40.75'	20.47'	40.66'	S78°30'41"E
C7	48°53'49"	176.50'	150.63'	80.24'	146.10'	S47°26'54"E
C8	13°00'09"	176.50'	40.05'	20.11'	39.97'	S16°29'55"E
C9	11°08'09"	176.50'	34.30'	17.21'	34.25'	S4°25'46"E
C10	114°08'17"	10.00'	19.92'	15.44'	16.79'	S34°04'09"W
C11	87°12'11"	226.50'	344.73'	215.70'	312.41'	N42°27'48"W
C12	6°36'50"	226.50'	26.15'	13.09'	26.13'	N2°10'07"W
C13	10°46'44"	226.50'	42.61'	21.37'	42.55'	N10°51'54"W
C14	13°29'04"	226.50'	53.31'	26.78'	53.18'	N22°59'48"W
C15	13°58'28"	226.50'	55.24'	27.76'	55.11'	N36°43'34"W
C16	14°11'12"	226.50'	56.08'	28.19'	55.94'	N50°48'24"W
C17	23°16'27"	226.50'	92.01'	46.65'	91.38'	N69°32'14"W
C18	4°53'26"	226.50'	19.33'	9.67'	19.33'	N83°37'10"W
C19	90°00'00"	20.00'	31.42'	20.00'	28.28'	N41°03'53"W

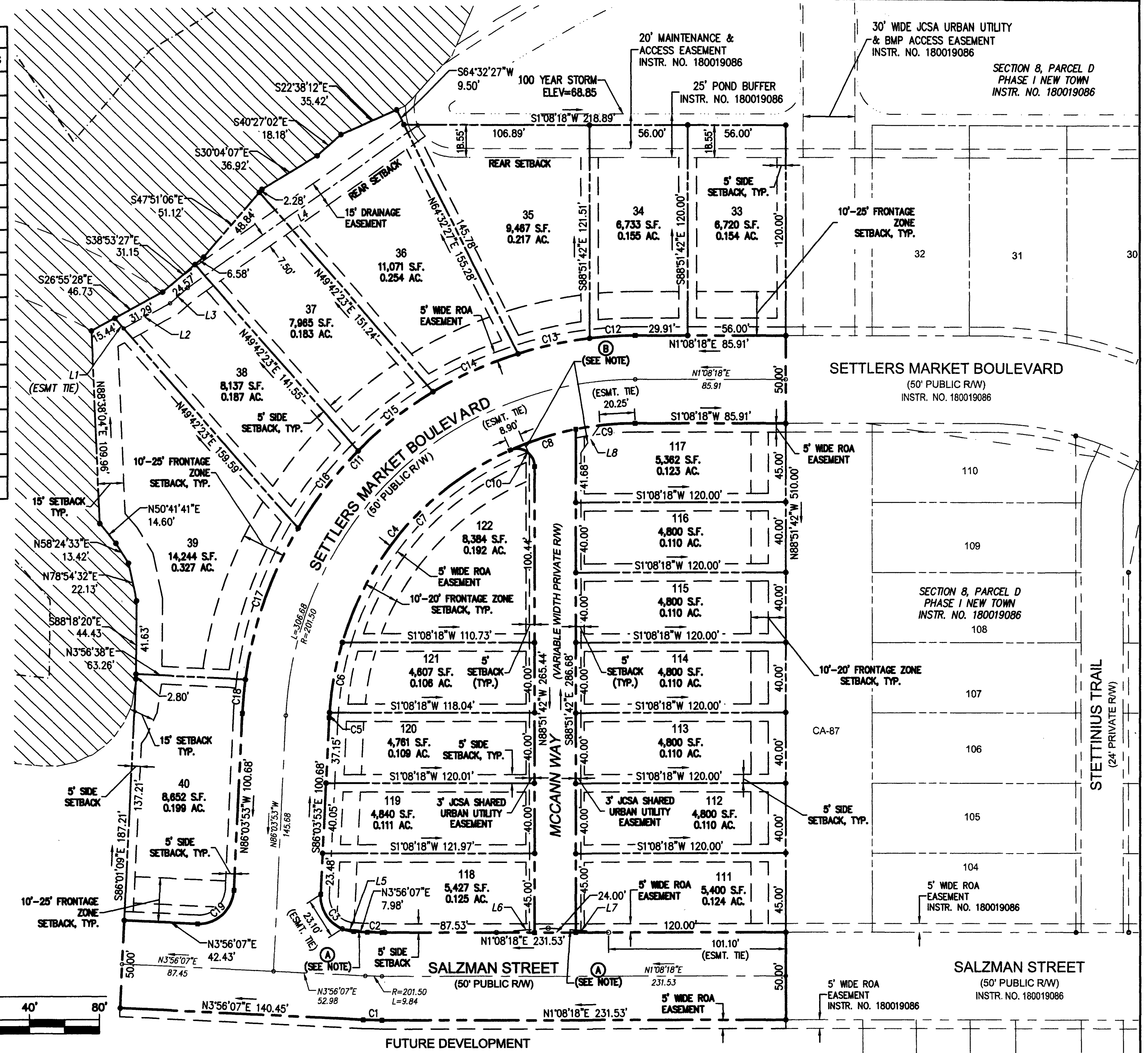
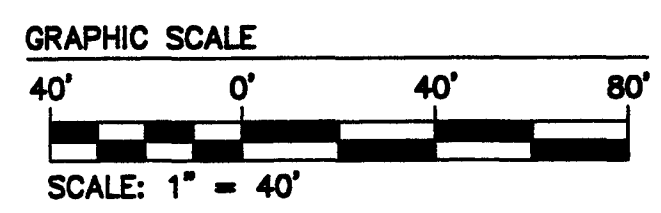
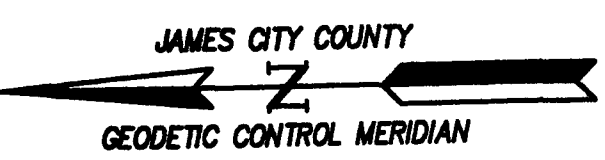
EASEMENT LINE TABLE		
LINE	BEARING	LENGTH
L1	S49°42'23"W	7.71'
L2	S26°55'28"E	30.29'
L3	S38°53'27"E	13.45'
L4	S33°48'24"E	162.03'
L5	S5°50'31"W	25.06'
L6	S3°37'56"E	30.06'
L7	S5°14'07"W	34.99'
L8	N54°11'32"W	19.11'

3 Large/Small Plat(s) Recorded  
 herewith as # 202207392  
 City of Williamsburg & County of James City  
 Circuit Court: This PLAT was recorded on  
May 9, 2022  
 at 1:04 AM/PM PB PG  
 Document # 202207392  
 MONA A. FOLEY, CLERK  
*Mona A. Foley*, Clerk

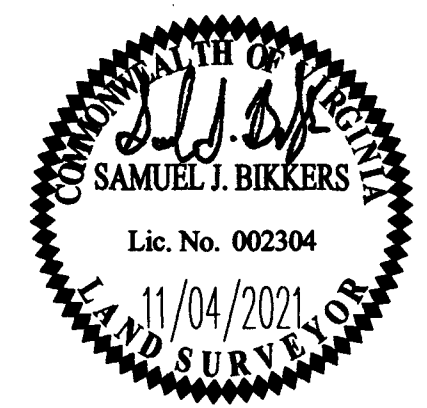
**LEGEND**

EXISTING CONSERVATION EASEMENT (INSTR. #120016286 AND INSTR. #170019026)

- (A) VARIABLE SIGHT EASEMENT HEREBY DEDICATED TO PUBLIC USE
- (B) VARIABLE WIDTH JCSA SHARED URBAN UTILITY EASEMENT



Rev.	Date	Description	Revised By
1	11/04/2021	REVISED PER COUNTY COMMENTS	JFS



**AES**  
 CONSULTING ENGINEERS  
 5248 Old Towne Road, Suite 1  
 Williamsburg, Virginia 23186  
 Phone: (757) 253-0040  
 Fax: (757) 220-8994  
 www.aesva.com

JCC CASE NO. S-21-0052  
 PLAT OF SUBDIVISION  
**SECTION 8, PARCEL D, PHASE 2A  
 NEW TOWN**  
 LOTS 33-40 AND 111-122  
 OWNED BY ABVA DEVELOPMENT, LP  
 JAMESTOWN DISTRICT | JAMES CITY COUNTY | VIRGINIA

Project Contacts: SJB/JAG  
 Project Number: 6632-08-01  
 Scale: 1" = 40' | Date: 07/13/2021  
 Sheet Number  
**3 OF 3**