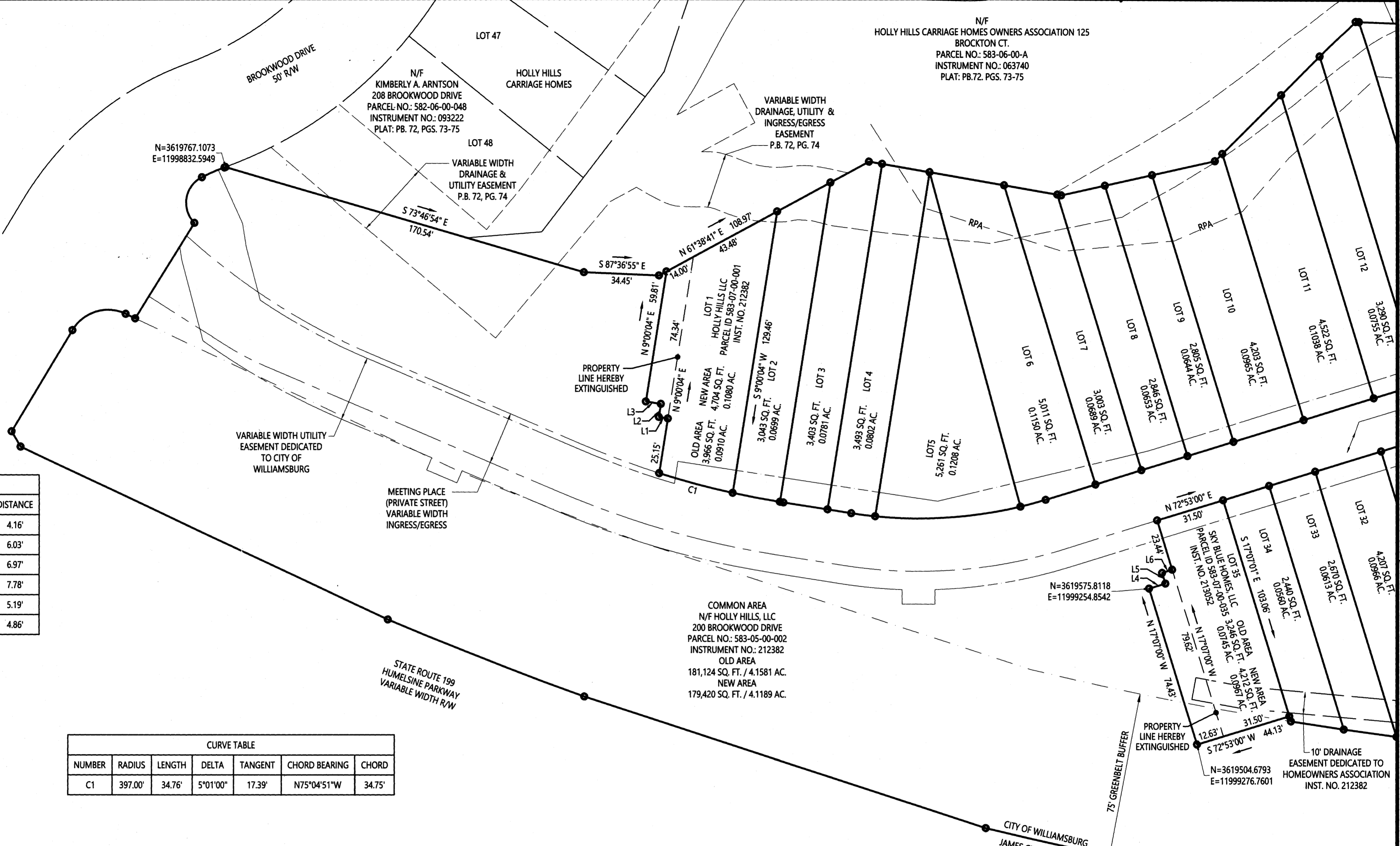


20220574



N/F  
HOLLY HILLS CARRIAGE HOMES OWNERS ASSOCIATION 125  
BROCKTON CT.  
PARCEL NO.: 583-06-00-A  
INSTRUMENT NO.: 063740  
PLAT: PB.72, PGS. 73-75



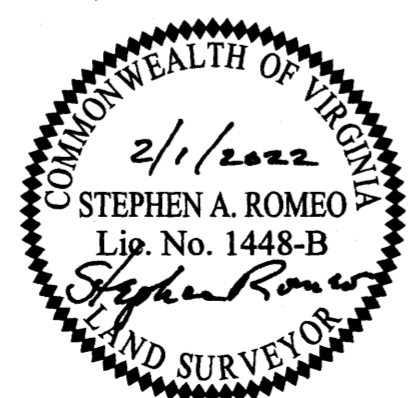
LINE TABLE		
LINE	BEARING	DISTANCE
L1	N80°59'56"W	4.16'
L2	N9°00'04"E	6.03'
L3	N80°59'56"W	6.97'
L4	N72°53'00"E	7.78'
L5	N17°07'00"W	5.19'
L6	N72°53'00"E	4.86'

CURVE TABLE						
NUMBER	RADIUS	LENGTH	DELTA	TANGENT	CHORD BEARING	CHORD
C1	397.00'	34.76'	5°01'00"	17.39'	N75°04'51"W	34.75'

City of Williamsburg & County of James City  
Circuit Court: This PLAT was recorded on  
February 18, 2022  
at 3:40 AM/PM, PG. 1  
Document # 20220574  
MONA A. FOLEY, CLERK  
*Monica Foley*, Clerk

2 (Large) Small Plat(s) Recorded  
herewith as # 20220574

**BOUNDARY LINE ADJUSTMENT PLAT  
HOLLY HILLS TOWNHOMES  
LOT 1 AND LOT 35  
AND COMMON AREA**



WILLIAMSBURG, VIRGINIA  
DATE: 2/1/2022  
SHEET 2 OF 2



**vhb** Transportation Land Development Environmental Services  
351 McLaws Circle, Suite 3  
Williamsburg, Virginia 23185  
757 220 0500 • FAX 757 903 2794