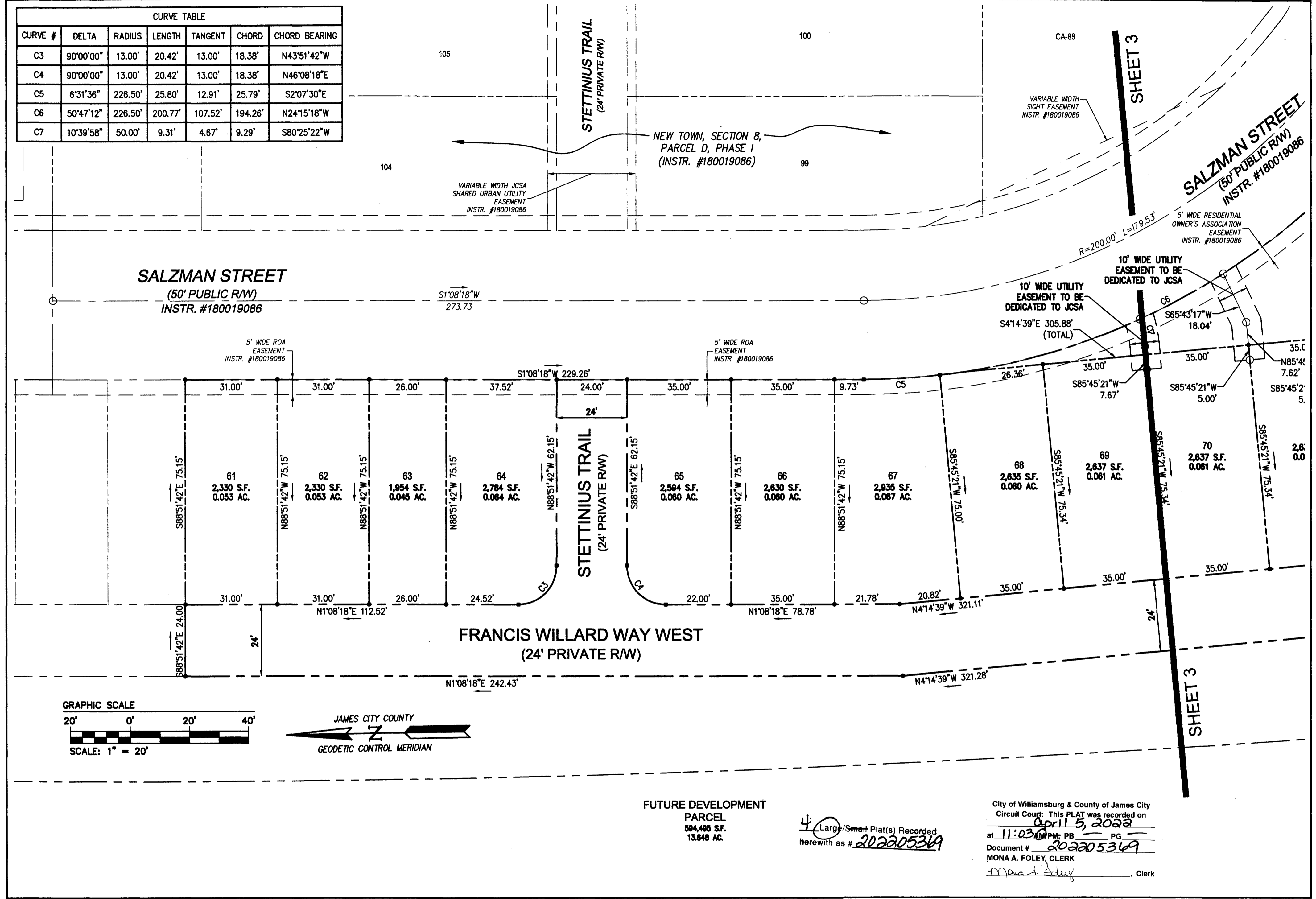
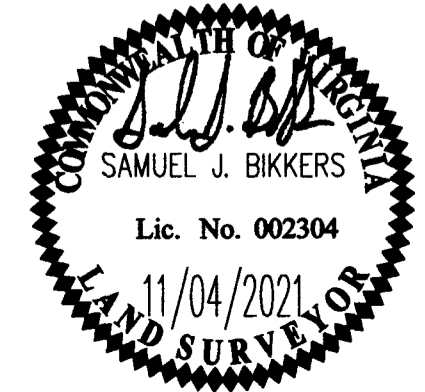


202205369

CURVE TABLE						
CURVE #	DELTA	RADIUS	LENGTH	TANGENT	CHORD	CHORD BEARING
C3	90°00'00"	13.00'	20.42'	13.00'	18.38'	N43°51'42"W
C4	90°00'00"	13.00'	20.42'	13.00'	18.38'	N46°08'18"E
C5	6°31'36"	226.50'	25.80'	12.91'	25.79'	S2°07'30"E
C6	50°47'12"	226.50'	200.77'	107.52'	194.26'	N24°15'18"W
C7	10°39'58"	50.00'	9.31'	4.67'	9.29'	S80°25'22"W



Rev.	Date	Description	Revised By
1	11/11/20	REVISED PER JCC COMMENTS	JAG



**AES**  
CONSULTING ENGINEERS

5248 Olde Towne Road, Suite 1  
Williamsburg, Virginia 23188  
Phone: (757) 253-0040  
Fax: (757) 220-8994  
www.aesva.com

Hampton Roads | Central Virginia | Middle Peninsula

JCC NO. S-20-0050  
PLAT OF SUBDIVISION

**SECTION 8, PARCEL D, PHASE IB**  
NEW TOWN  
LOTS 61-78, 123-124, AND CA-89  
OWNED BY ABVA DEVELOPMENT, LP

JAMESTOWN DISTRICT JAMES CITY COUNTY VIRGINIA

Project Contacts: SJB/JAG  
Project Number: 6632-08-01  
Scale: 1"=20' Date: 11/11/2020  
Sheet Number  
**4 OF 4**

S:\2022\202205369\1-Phase 2\202205369\Plat\Plat\Phase 2 - 202205369.dwg, 11/04/2021 1:27:09 PM, hmcadams