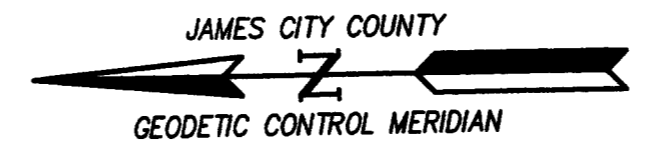
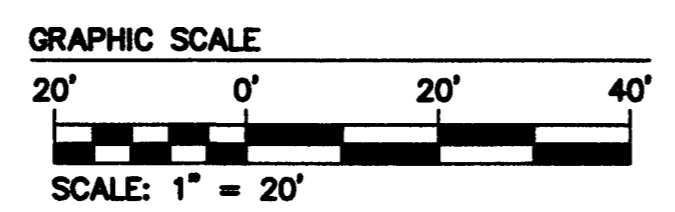
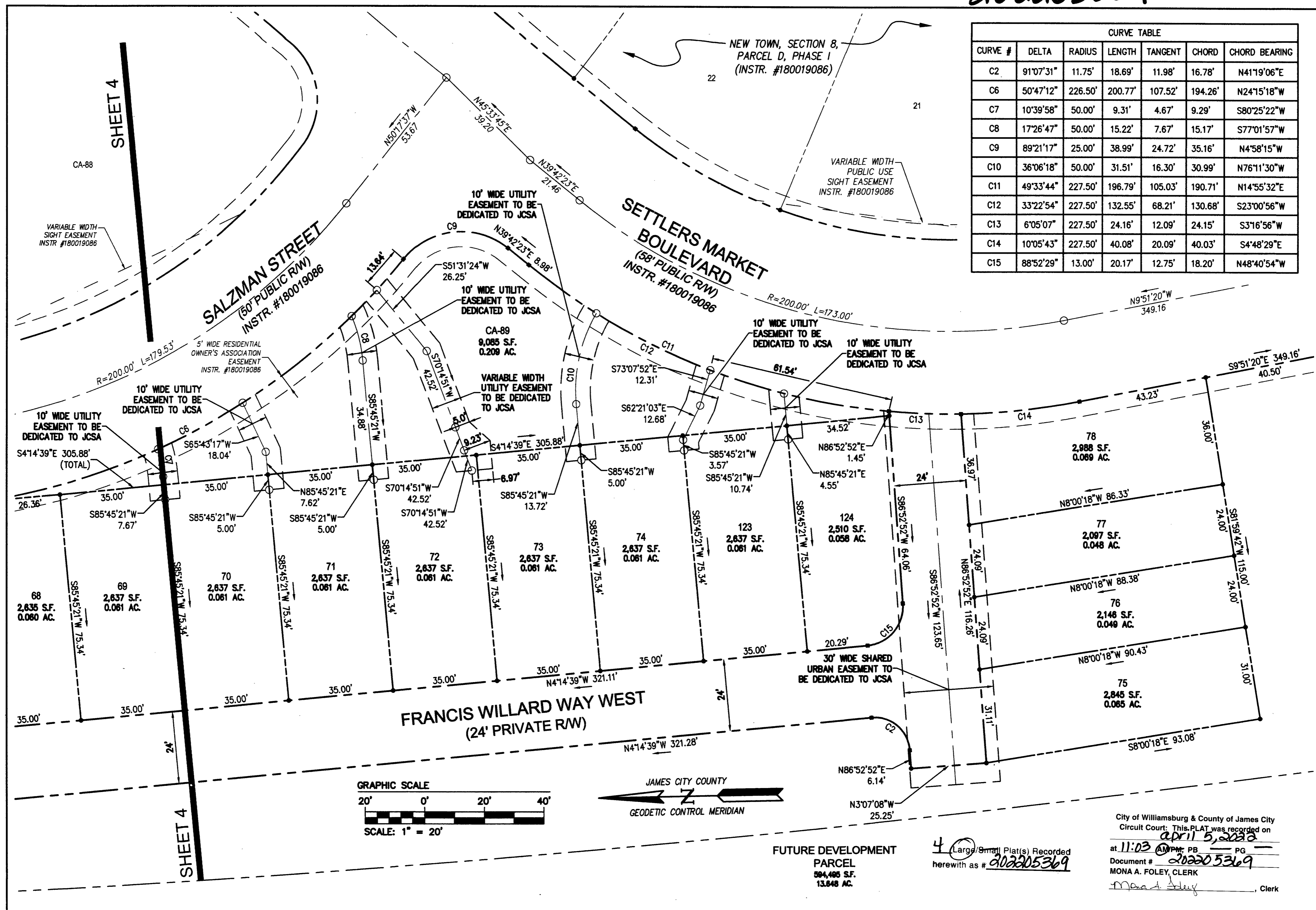


202205369

CURVE TABLE						
CURVE #	DELTA	RADIUS	LENGTH	TANGENT	CHORD	CHORD BEARING
C2	91°07'31"	11.75'	18.69'	11.98'	16.78'	N41°19'06"E
C6	50°47'12"	226.50'	200.77'	107.52'	194.26'	N24°15'18"W
C7	10°39'58"	50.00'	9.31'	4.67'	9.29'	S80°25'22"W
C8	17°26'47"	50.00'	15.22'	7.67'	15.17'	S77°01'57"W
C9	89°21'17"	25.00'	38.99'	24.72'	35.16'	N4°58'15"W
C10	36°06'18"	50.00'	31.51'	16.30'	30.99'	N76°11'30"W
C11	49°33'44"	227.50'	196.79'	105.03'	190.71'	N14°55'32"E
C12	33°22'54"	227.50'	132.55'	68.21'	130.68'	S23°00'56"W
C13	6°05'07"	227.50'	24.16'	12.09'	24.15'	S3°16'56"W
C14	10°05'43"	227.50'	40.08'	20.09'	40.03'	S4°48'29"E
C15	88°52'29"	13.00'	20.17'	12.75'	18.20'	N48°40'54"W

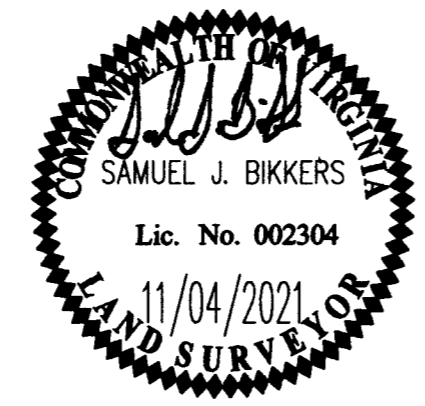


FUTURE DEVELOPMENT
PARCEL
594,486 S.F.
13.848 AC.

4 Large/Small Plat(s) Recorded
herewith as # 202205369

City of Williamsburg & County of James City
Circuit Court: This PLAT was recorded on
April 5, 2022
at 11:03 AM/PM PB PG
Document # 202205369
MONA A. FOLEY, CLERK
Mona A. Foley, Clerk

Rev.	Date	Description	Revised By
1	11/11/20	REVISED PER JCC COMMENTS	JAG



AES
CONSULTING ENGINEERS
Hampton Roads | Central Virginia | Middle Peninsula
5248 Old Towne Road, Suite 1
Williamsburg, Virginia 23188
Phone: (757) 253-0040
Fax: (757) 220-8894
www.aesva.com

JCC NO. S-20-0050
PLAT OF SUBDIVISION
**SECTION 8, PARCEL D, PHASE IB
NEW TOWN**
LOTS 61-78, 123-124, AND CA-89
OWNED BY ABVA DEVELOPMENT, LP
JAMESTOWN DISTRICT | JAMES CITY COUNTY | VIRGINIA

Project Contacts: SJBJAG
Project Number: 6632-08-01
Scale: 1"=20' | Date: 11/11/2020
Sheet Number
3 OF 4