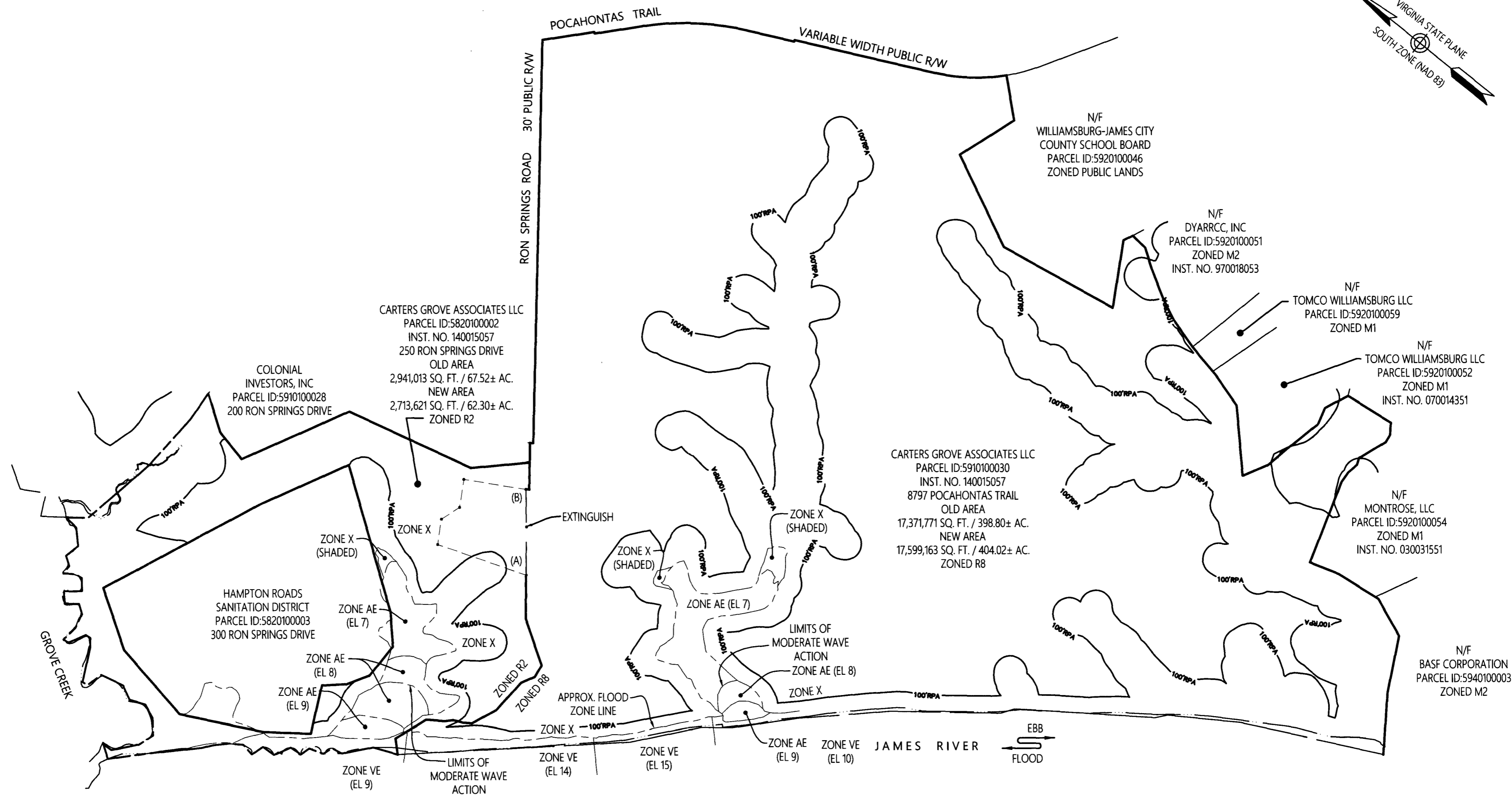
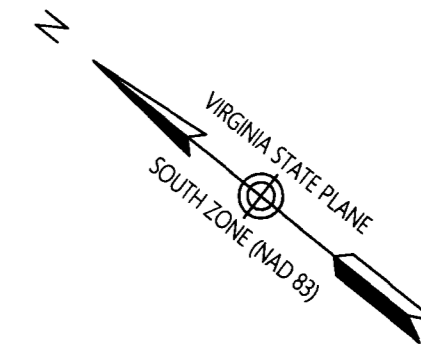
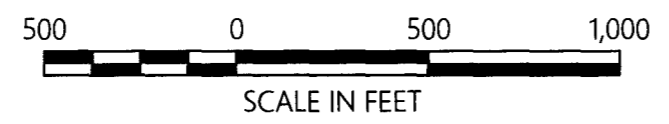
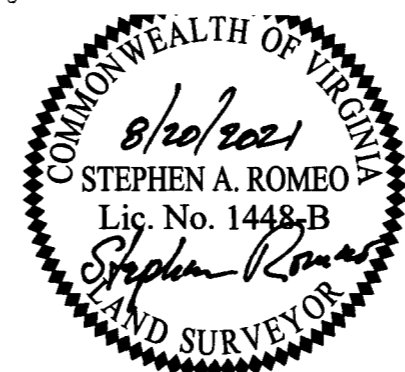


202203318



3 Large/Small Plat(s) Recorded
L.P.L. # 202203318

City of Williamsburg & County of James City
Circuit Court: This PLAT was recorded on
March 4, 2022
at 2:44 AM/PM, PB PG
Document # 202203318
MONA A. FOLEY, CLERK
Mona A. Foley, Clerk



**Boundary Line Adjustment
Being The Property Of
Carters Grove Associates LLC
Parcels 5820100002 and 5910100030**

James City County, Virginia

DATE: 8/20/2021	SHEET 2 OF 3	SCALE: 1"=500'
PROJECT NO: 34122.11	DRAWN BY: CRO	CHECKED BY: SAR

Transportation
Land Development
Environmental Services

351 McLaws Circle, Suite 3
Williamsburg, Virginia 23185
757 220 0500 • FAX 757 903 2794