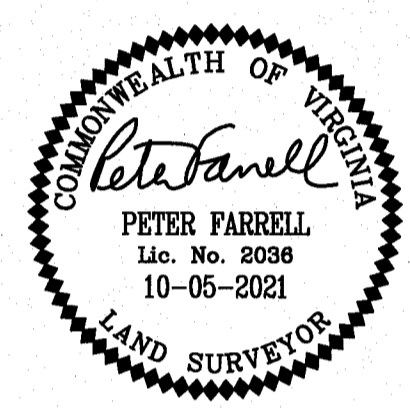


202200768

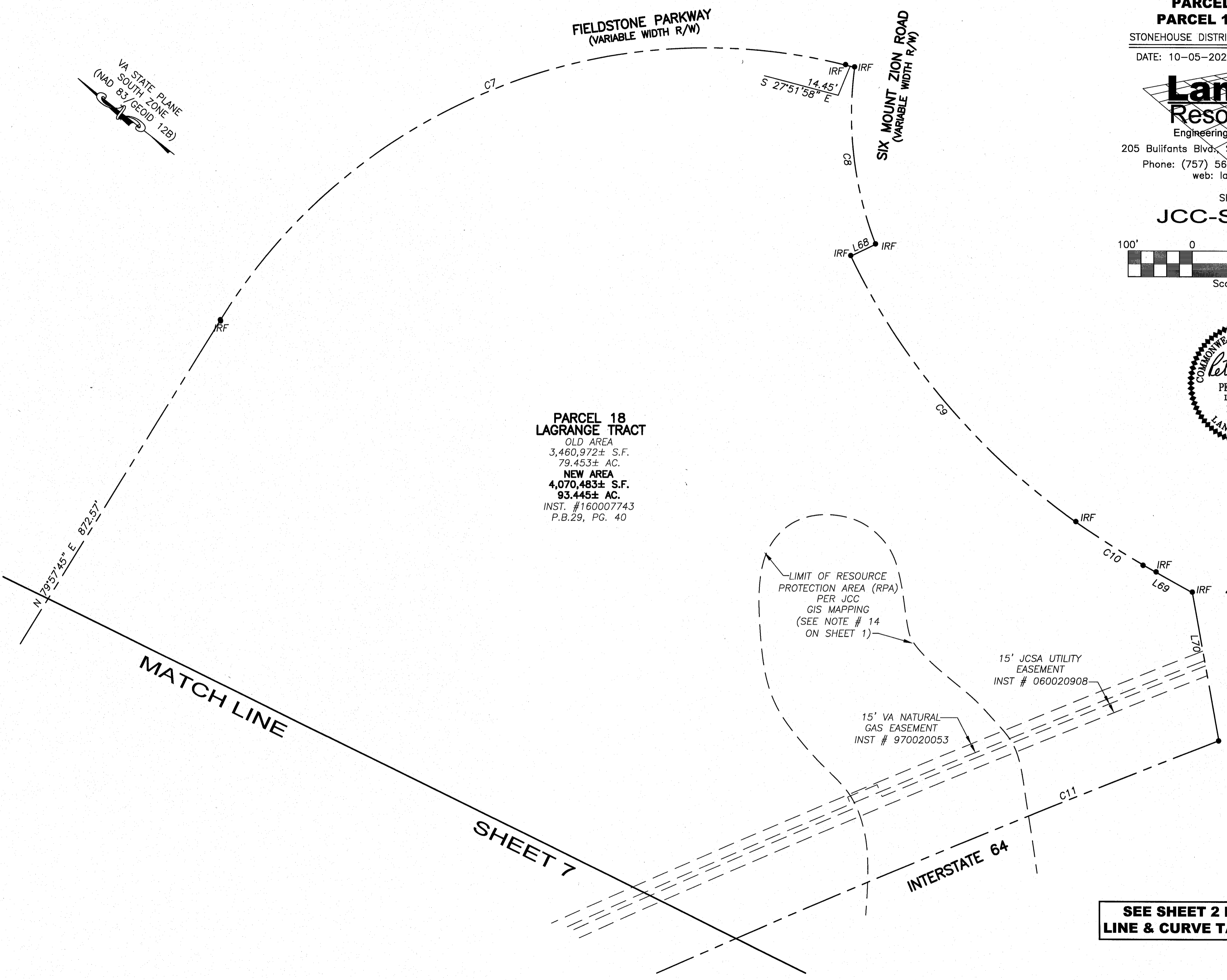
BOUNDARY LINE ADJUSTMENT  
BETWEEN  
**PARCEL B STONEHOUSE &  
PARCEL 18, LAGRANGE TRACT**  
STONEHOUSE DISTRICT - JAMES CITY COUNTY - VIRGINIA  
DATE: 10-05-2021 JOB # 20-224

**LandTech**  
Resources, Inc.  
Engineering & Surveying Consultants  
205 Bulifants Blvd., Suite E, Williamsburg, Virginia 23188  
Phone: (757) 565-1677 Fax: (757) 565-0782  
web: landtechresources.com

SHEET 8 OF 8  
**JCC-S-21-0028**  
100' 0 100' 200' 300'  
Scale: 1" = 100'



**PARCEL 18  
LAGRANGE TRACT**  
OLD AREA  
3,460,972± S.F.  
79.453± AC.  
NEW AREA  
4,070,483± S.F.  
93.445± AC.  
INST. #160007743  
P.B.29, PG. 40



LIMIT OF RESOURCE  
PROTECTION AREA (RPA)  
PER JCC  
GIS MAPPING  
(SEE NOTE # 14  
ON SHEET 1)

15' JCSA UTILITY  
EASEMENT  
INST # 060020908

15' VA NATURAL  
GAS EASEMENT  
INST # 970020053

8 (Large/Small Plat(s) Recorded  
herewith as # 202200768

City of Williamsburg & County of James City  
Circuit Court: This PLAT was recorded on  
January 19, 2022  
at 10:16 AM/PM, PG.     
Document # 202200768  
MONA A. FOLEY, CLERK  
*Mona A. Foley*, Clerk

**SEE SHEET 2 FOR  
LINE & CURVE TABLES**