

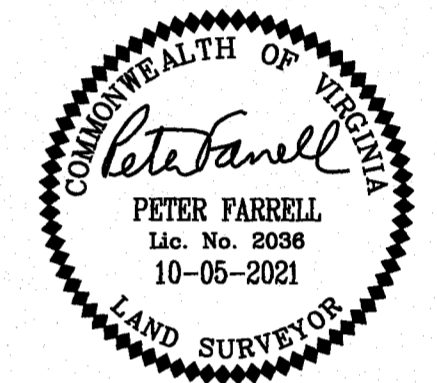
202200768

MATCH LINE SHEET 5

BOUNDARY LINE ADJUSTMENT
BETWEEN
**PARCEL B STONEHOUSE &
PARCEL 18, LAGRANGE TRACT**
STONEHOUSE DISTRICT - JAMES CITY COUNTY - VIRGINIA
DATE: 10-05-2021 JOB # 20-224

LandTech
Resources, Inc.
Engineering & Surveying Consultants
205 Bulfants Blvd., Suite E, Williamsburg, Virginia 23188
Phone: (757) 565-1677 Fax: (757) 565-0782
web: landtechresources.com

SHEET 4 OF 8
JCC-S-21-0028
100' 0 100' 200' 300'
Scale: 1" = 100'



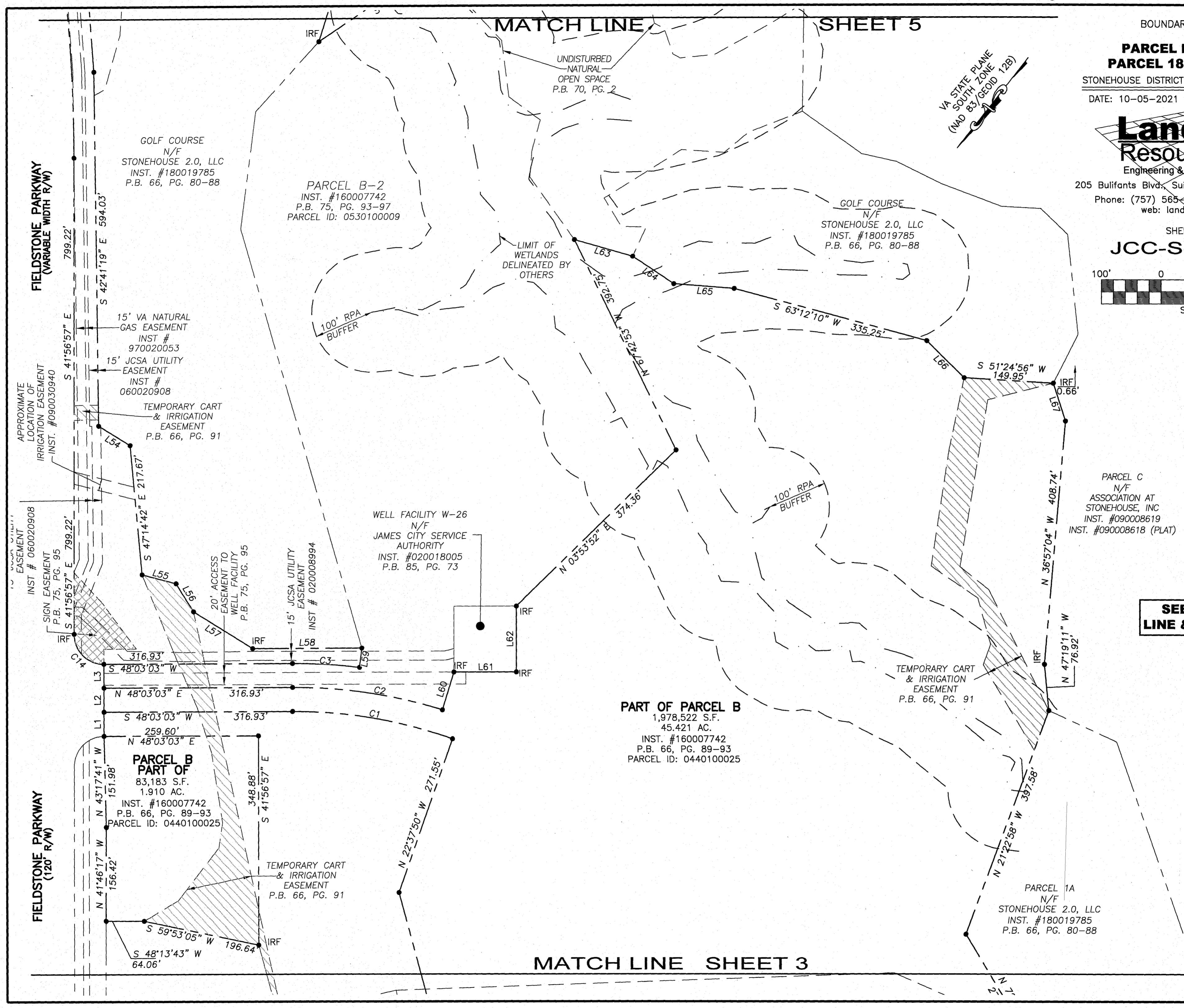
PARCEL C
N/F
ASSOCIATION AT
STONEHOUSE, INC
INST. #090008619
INST. #090008618 (PLAT)

**SEE SHEET 2 FOR
LINE & CURVE TABLES**

8 Large/Small Plat(s) Recorded
herewith as # 202200768

City of Williamsburg & County of James City
Circuit Court: This PLAT was recorded on
January 19, 2022
at 10:10 AM, PG. 1 PG. 1
Document # 202200768
MONA A. FOLEY, CLERK
Mona A. Foley, Clerk

LEGEND
NF = NAIL FOUND
IRF = IRON ROD FOUND



MATCH LINE SHEET 3

PART OF PARCEL B
1,978,522 S.F.
45,421 AC.
INST. #160007742
P.B. 66, PG. 89-93
PARCEL ID: 0440100025

**PARCEL B
PART OF**
83,183 S.F.
1.910 AC.
INST. #160007742
P.B. 66, PG. 89-93
PARCEL ID: 0440100025

PARCEL B-2
INST. #160007742
P.B. 75, PG. 93-97
PARCEL ID: 0530100009

**GOLF COURSE
N/F
STONEHOUSE 2.0, LLC**
INST. #180019785
P.B. 66, PG. 80-88

**WELL FACILITY W-26
N/F
JAMES CITY SERVICE
AUTHORITY**
INST. #020018005
P.B. 85, PG. 73

**PARCEL 1A
N/F
STONEHOUSE 2.0, LLC**
INST. #180019785
P.B. 66, PG. 80-88

**TEMPORARY CART
& IRRIGATION
EASEMENT**
P.B. 66, PG. 91

**15' VA NATURAL
GAS EASEMENT**
INST #
970020053
**15' JCSA UTILITY
EASEMENT**
INST #
060020908
**TEMPORARY CART
& IRRIGATION
EASEMENT**
P.B. 66, PG. 91

**APPROXIMATE
LOCATION OF
IRRIGATION EASEMENT**
INST. #0900030940

SIGN EASEMENT
P.B. 75, PG. 95
**20' ACCESS
EASEMENT TO
WELL FACILITY**
P.B. 75, PG. 95
**15' JCSA UTILITY
EASEMENT**
INST # 020008994

**TEMPORARY CART
& IRRIGATION
EASEMENT**
P.B. 66, PG. 91

UNDISTURBED
NATURAL
OPEN SPACE
P.B. 70, PG. 2

LIMIT OF
WETLANDS
DELINEATED BY
OTHERS

100' RPA
BUFFER

100' RPA
BUFFER

FIELDSTONE PARKWAY
(VARIABLE WIDTH R/W)

FIELDSTONE PARKWAY
(120' R/W)

