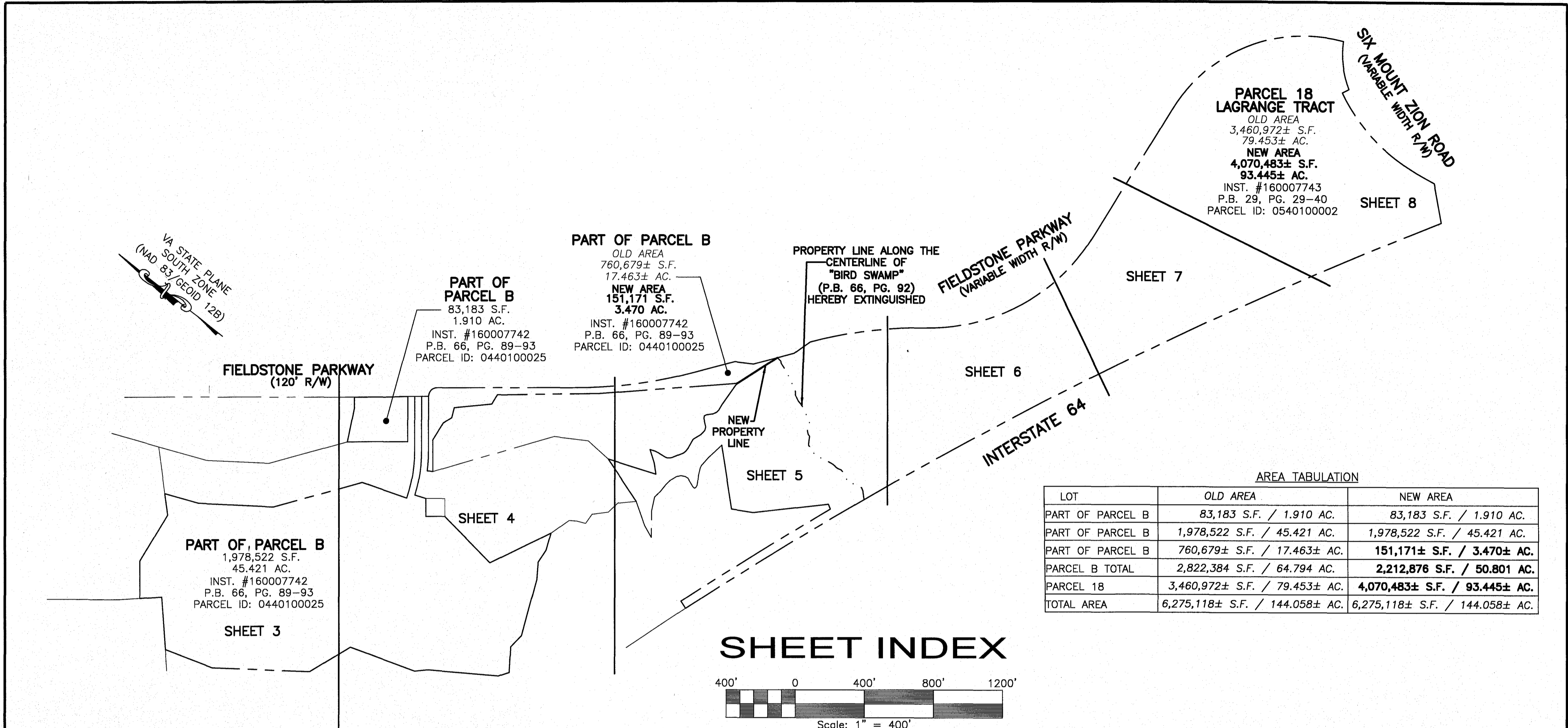


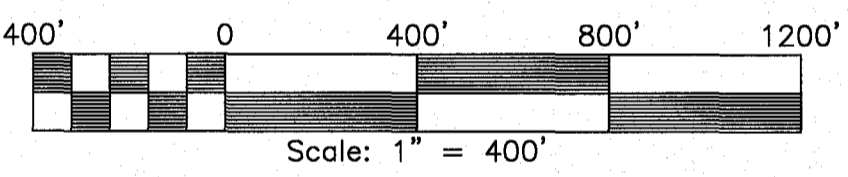
202200768



AREA TABULATION

LOT	OLD AREA	NEW AREA
PART OF PARCEL B	83,183 S.F. / 1.910 AC.	83,183 S.F. / 1.910 AC.
PART OF PARCEL B	1,978,522 S.F. / 45.421 AC.	1,978,522 S.F. / 45.421 AC.
PART OF PARCEL B	760,679± S.F. / 17.463± AC.	151,171± S.F. / 3.470± AC.
PARCEL B TOTAL	2,822,384 S.F. / 64.794 AC.	2,212,876 S.F. / 50.801 AC.
PARCEL 18	3,460,972± S.F. / 79.453± AC.	4,070,483± S.F. / 93.445± AC.
TOTAL AREA	6,275,118± S.F. / 144.058± AC.	6,275,118± S.F. / 144.058± AC.

SHEET INDEX



LINE	BEARING	DISTANCE
L1	S 41°56'57" E	40.00'
L2	S 41°56'57" E	40.00'
L3	S 41°56'57" E	40.00'
L4	S 34°46'08" E	107.70'
L5	S 56°34'13" E	143.01'
L6	S 56°34'13" E	99.30'
L7	S 77°00'07" E	116.05'
L8	N 15°16'57" E	50.00'
L9	N 25°57'12" E	30.68'
L10	N 32°53'04" W	127.00'
L11	N 84°51'00" W	104.44'
L12	N 89°47'41" W	61.95'
L13	S 73°38'26" W	16.31'
L14	S 61°44'58" W	39.06'
L15	S 55°00'32" W	60.74'
L16	S 77°49'12" W	15.15'
L17	N 72°52'37" W	9.52'
L18	N 01°36'58" W	12.25'
L19	N 17°06'31" E	58.53'
L20	N 12°08'22" W	18.52'
L21	N 28°57'29" W	25.49'
L22	N 57°24'46" W	27.59'
L23	N 73°25'07" W	37.71'
L24	N 85°38'55" W	39.06'
L25	S 87°12'46" W	46.96'
L26	N 85°58'11" W	48.62'
L27	S 60°24'03" W	81.16'
L28	S 48°55'51" W	154.64'
L29	N 18°27'37" E	78.01'
L30	N 29°08'08" E	149.43'
L31	N 40°02'05" E	64.79'
L32	N 30°53'38" E	81.85'

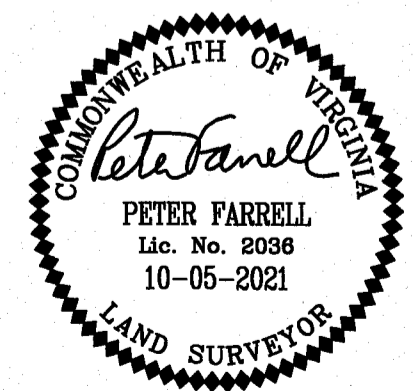
LINE	BEARING	DISTANCE
L33	S 24°56'28" E	31.16'
L34	S 14°47'49" E	17.79'
L35	S 09°00'10" E	47.18'
L36	S 19°20'40" E	12.67'
L37	S 35°23'20" E	12.94'
L38	S 49°57'58" E	15.86'
L39	S 63°47'52" E	73.55'
L40	S 79°50'10" E	15.90'
L41	N 87°05'32" E	19.58'
L42	N 78°06'35" E	60.81'
L43	S 89°14'43" E	7.80'
L44	S 72°34'28" E	46.64'
L45	S 87°25'45" E	32.58'
L46	N 64°06'13" E	21.74'
L47	N 34°19'51" E	49.94'
L48	N 58°41'56" E	15.10'
L49	S 67°31'58" E	14.01'
L50	S 49°54'54" E	38.22'
L51	S 66°15'46" E	22.50'
L52	S 83°10'43" E	16.47'
L53	N 77°55'52" E	36.77'
L54	N 79°49'05" E	62.23'
L55	N 62°49'34" E	59.13'
L56	S 73°54'59" E	55.32'
L57	N 79°57'44" E	117.06'
L58	N 48°03'03" E	183.07'
L59	S 34°42'38" E	32.35'
L60	N 24°45'57" W	65.88'
L61	N 48°03'03" E	105.00'
L62	N 41°56'57" W	110.00'
L63	S 64°15'49" W	102.08'
L64	S 81°41'42" W	82.88'

LINE	BEARING	DISTANCE
L65	S 52°34'52" W	101.99'
L66	N 87°18'54" W	88.25'
L67	N 59°43'43" W	66.67'
L68	S 67°43'07" E	42.86'
L69	N 13°07'33" W	64.49'
L70	N 37°49'03" E	231.03'

CURVE	RADIUS	ARC LENGTH	TANGENT	CHORD LENGTH	CHORD BEARING	DELTA ANGLE
C1	810.00'	273.10'	137.86'	271.81'	N 57°42'52" E	19°19'05"
C2	850.00'	254.93'	128.43'	253.97'	N 56°38'29" E	17°11'02"
C3	890.00'	112.44'	56.30'	112.37'	N 51°40'13" E	7°14'20"
C4	2718.12'	693.63'	348.71'	691.75'	S 49°15'35" E	14°37'16"
C5	2528.00'	681.76'	342.96'	679.70'	N 48°51'52" W	15°27'07"
C6	1116.00'	1147.22'	630.10'	1097.37'	S 70°35'17" E	58°53'55"
C7	895.00'	1127.37'	652.30'	1054.30'	N 63°57'06" W	72°10'17"
C8	555.00'	280.43'	143.28'	277.46'	S 41°21'07" W	28°57'03"
C9	1069.45'	548.19'	280.26'	542.21'	S 07°35'47" W	29°22'10"
C10	1400.00'	147.53'	73.83'	147.46'	S 10°06'25" E	6°02'16"
C11	24705.33'	3714.12'	1860.57'	3710.62'	N 67°33'33" W	8°36'49"
C12	24705.33'	1211.97'	606.11'	1211.85'	N 73°19'37" W	2°48'39"
C13	24755.33'	1017.40'	508.77'	1017.33'	S 73°33'18" E	2°21'17"
C14	50.00'	78.54'	50.00'	70.71'	N 86°56'57" W	89°59'56"

Large/Small Plat(s) Recorded
herewith as # 202200768

City of Williamsburg & County of James City
Circuit Court: This PLAT was recorded on
January 19, 2022
at 10:16 AM/PM, PG.
Document # 202200768
MONA A. FOLEY, CLERK
Mona A. Foley, Clerk



BOUNDARY LINE ADJUSTMENT
BETWEEN
**PARCEL B STONEHOUSE &
PARCEL 18, LAGRANGE TRACT**
STONEHOUSE DISTRICT - JAMES CITY COUNTY - VIRGINIA
DATE: 10-05-2021 JOB # 20-224

LandTech Resources, Inc.
Engineering & Surveying Consultants
205 Bulfants Blvd., Suite E, Williamsburg, Virginia 23188
Phone: (757) 565-1677 Fax: (757) 565-0782
web: landtechresources.com