

202200759

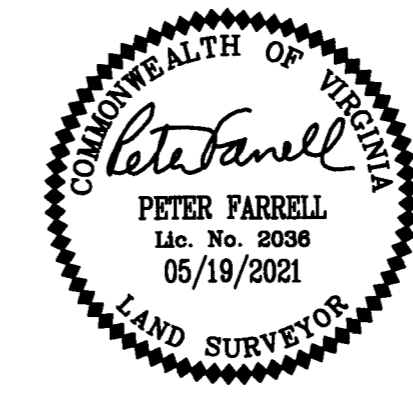
SUBDIVISION OF
STONEHOUSE TRACT 3
PARCEL "C"

CREATING
PARCEL "C" SECTION 3
LOT 54 THROUGH LOT 81

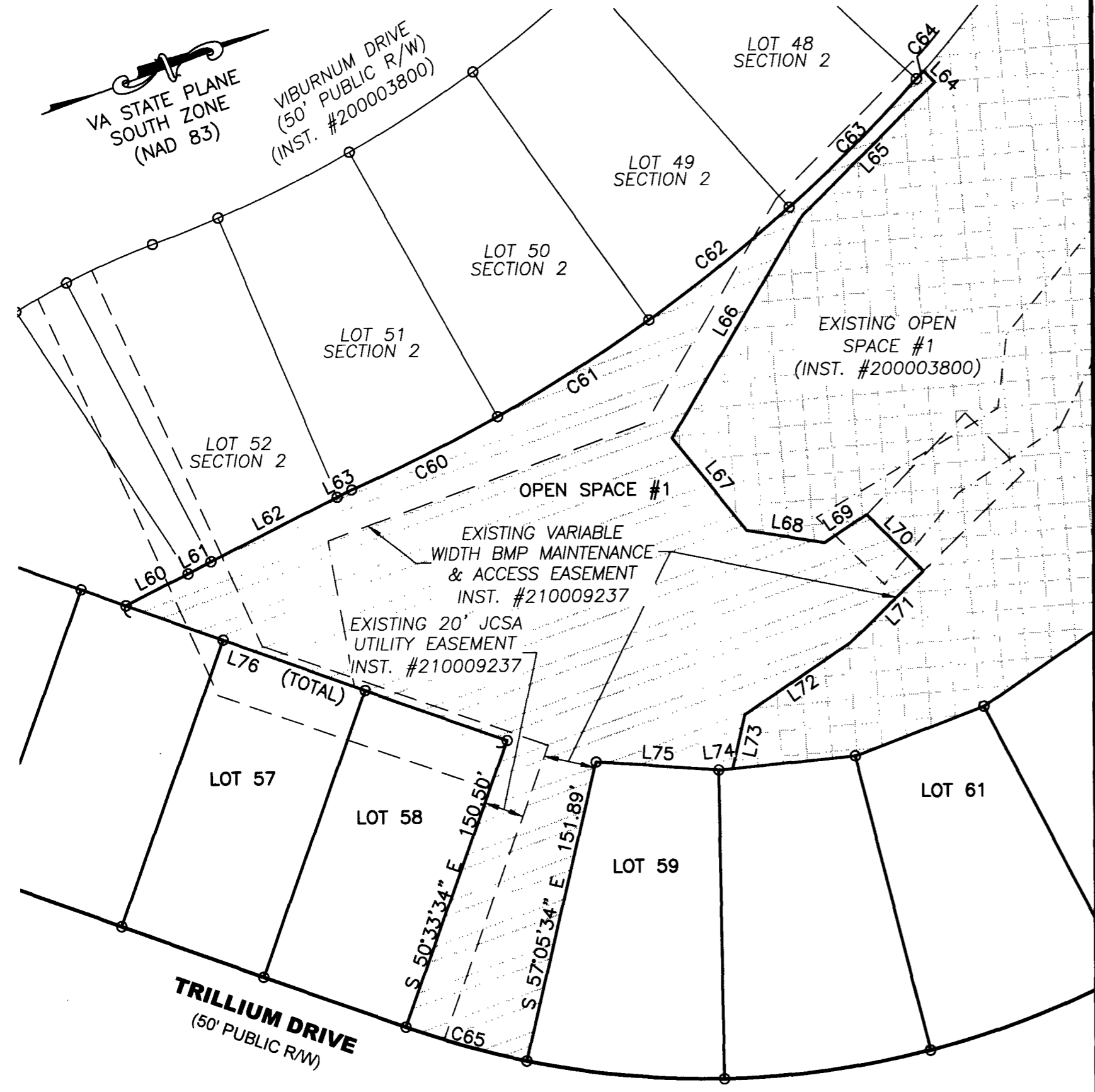
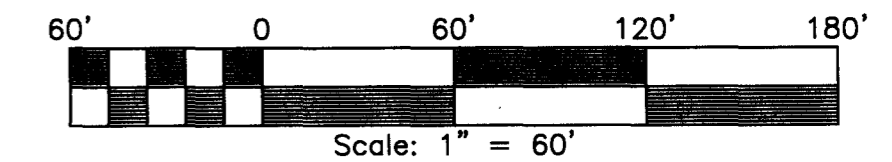
STONEHOUSE DISTRICT JAMES CITY COUNTY VIRGINIA
DATE: 05/19/2021 JOB # 17-378



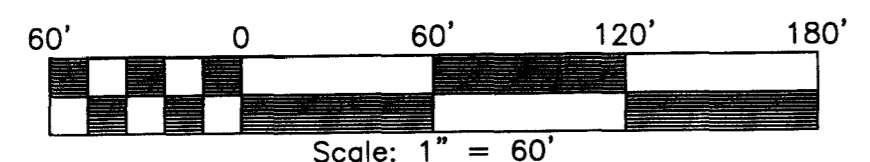
Engineering & Surveying Consultants
205 Bulifants Blvd., Suite E., Williamsburg, Virginia 23188
Phone: (757) 565-1677 Fax: (757) 565-0782
web: landtechresources.com



SHEET 5 OF 5
JCC-S-21-0025

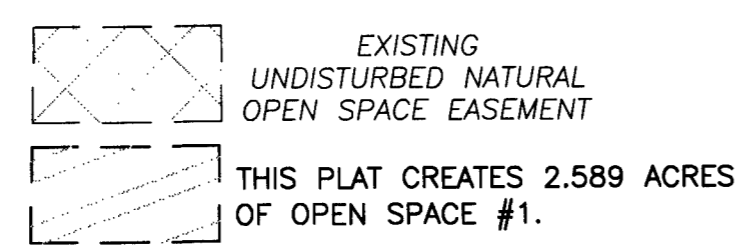


OPEN SPACE DETAIL



CURVE	RADIUS	ARC LENGTH	TANGENT	CHORD LENGTH	CHORD BEARING	DELTA ANGLE
C60	825.00'	81.18'	40.62'	81.15'	N 06°36'13" W	5°38'16"
C61	825.00'	89.07'	44.58'	89.02'	N 12°30'55" W	6°11'08"
C62	825.00'	89.07'	44.58'	89.02'	N 18°42'03" W	6°11'08"
C63	825.00'	89.06'	44.58'	89.02'	N 24°53'11" W	6°11'08"
C64	825.00'	5.15'	2.57'	5.15'	N 28°09'28" W	0°21'27"
C65	445.00'	62.63'	31.37'	62.58'	N 35°31'27" E	8°03'49"

LINE	BEARING	DISTANCE
L60	S 06°55'58" E	34.71'
L61	N 07°30'32" W	12.81'
L62	S 06°55'59" E	70.32'
L63	S 06°55'59" E	7.90'
L64	N 63°10'14" E	7.80'
L65	S 24°52'57" E	92.71'
L66	S 39°41'45" E	127.49'
L67	N 71°08'24" E	59.09'
L68	N 28°51'39" E	39.11'
L69	N 13°46'55" W	25.18'
L70	N 64°53'09" E	39.64'
L71	S 24°29'23" E	50.48'
L72	S 14°12'25" E	63.14'
L73	S 57°12'00" E	27.63'
L74	S 14°01'59" W	6.86'
L75	N 23°54'11" E	61.00'
L76	S 39°26'26" W	201.37'



City of Williamsburg & County of James City
Circuit Court: This PLAT was recorded on
January 19, 2022
at 9:46 AM/PM, PB PG
Document # 202200759
MONA A. FOLEY, CLERK
Mona A. Foley, Clerk

50 (Large) Small Plat(s) Recorded
herewith as # 202200759

PROPERTY LINE, R/W & EASEMENTS

LINE	BEARING	DISTANCE
L1	N 50°33'34" W	89.60'
L2	N 50°33'34" W	58.56'
L3	N 50°33'34" W	117.50'
L4	N 39°26'26" E	59.50'
L5	N 48°03'00" W	16.86'
L6	N 23°54'11" E	61.00'
L7	N 14°01'59" E	68.02'
L8	N 01°11'14" W	68.49'
L9	N 40°57'28" E	32.72'
L10	N 59°04'14" E	32.91'
L11	N 59°04'14" E	33.08'
L12	S 40°50'17" W	41.22'
L13	S 40°50'17" W	41.82'
L14	S 39°36'41" W	13.44'
L15	S 39°26'25" W	66.57'
L16	S 39°26'26" W	68.36'
L17	N 44°56'57" E	56.06'
L18	N 04°06'12" E	39.04'
L19	S 85°53'48" E	30.00'
L20	S 04°06'12" W	51.51'
L21	S 38°18'04" E	43.77'
L22	S 02°28'16" W	54.77'
L23	S 47°21'07" W	83.78'
L24	S 04°01'20" E	96.03'
L25	S 10°26'49" E	45.36'
L26	S 19°56'03" W	104.86'
L27	S 14°42'29" W	70.21'
L28	S 40°25'28" W	47.25'
L29	S 61°03'10" W	79.65'

LINE	BEARING	DISTANCE
L50	N 39°26'26" E	174.54'
L51	N 39°26'26" E	119.35'
L52	N 50°33'34" W	233.56'
L53	N 39°26'26" E	32.50'
L54	N 41°46'37" W	32.50'

PROPERTY LINE, R/W & EASEMENTS

CURVE	RADIUS	ARC LENGTH	TANGENT	CHORD LENGTH	CHORD BEARING	DELTA ANGLE
C1	404.15'	22.49'	11.25'	22.49'	N 46°56'58" W	3°11'20"
C2	32.50'	50.51'	31.96'	45.58'	S 03°31'44" E	89°02'32"
C3	2200.00'	45.06'	22.53'	45.06'	N 40°24'19" E	1°10'25"
C4	2200.00'	14.52'	7.26'	14.52'	N 39°37'46" E	0°22'41"
C5	32.50'	51.05'	32.50'	45.96'	S 84°26'26" W	90°00'00"
C6	32.50'	34.53'	19.10'	32.93'	N 20°07'15" W	60°52'38"
C7	32.50'	7.37'	3.70'	7.36'	N 16°48'55" E	12°59'42"
C8	57.50'	88.35'	55.56'	79.91'	S 20°42'17" E	88°02'04"
C9	57.50'	55.16'	29.91'	53.07'	N 87°47'38" E	54°58'07"
C10	57.50'	45.85'	24.22'	44.65'	N 37°27'55" E	45°41'18"
C11	57.50'	44.20'	23.26'	43.12'	N 07°24'01" W	44°02'35"
C12	57.50'	6.09'	3.05'	6.08'	N 47°31'38" W	6°03'52"
C12A	57.50'	15.13'	7.61'	15.08'	N 36°57'31" W	15°04'24"
C13	32.50'	51.05'	32.50'	45.96'	S 05°33'34" E	90°00'00"
C14	496.73'	77.40'	38.78'	77.32'	N 35°20'05" E	8°55'40"
C15	495.00'	72.76'	36.45'	72.69'	N 26°39'09" E	8°25'18"
C16	495.00'	74.38'	37.26'	74.31'	N 18°08'14" E	8°36'33"
C17	495.00'	238.19'	121.45'	235.90'	N 00°02'51" E	27°34'12"
C18	495.00'	41.83'	20.93'	41.82'	N 16°09'30" W	4°50'30"
C19	194.00'	60.28'	30.38'	60.04'	S 09°40'39" E	17°48'10"
C20	194.00'	68.24'	34.47'	67.88'	S 09°18'00" W	20°09'09"
C21	32.50'	50.38'	31.84'	45.49'	S 63°47'06" W	88°49'02"
C22	57.50'	60.23'	33.21'	57.51'	N 78°11'10" E	60°00'54"
C23	57.50'	104.20'	73.37'	90.52'	N 03°44'11" W	103°49'48"
C24	57.50'	64.44'	36.08'	61.12'	N 87°45'31" W	64°12'53"
C25	244.00'	61.69'	31.01'	61.53'	S 40°58'48" W	14°29'10"
C26	244.00'	72.05'	36.29'	71.79'	S 25°16'39" W	16°55'08"
C27	244.00'	69.26'	34.86'	69.02'	S 08°41'12" W	16°15'46"
C28	244.00'	69.44'	34.95'	69.20'	S 07°35'50" E	16°18'17"
C29	244.00'	12.05'	6.03'	12.05'	S 17°09'51" E	2°49'46"
C30	445.00'	83.21'	41.73'	83.09'	N 13°13'20" W	10°42'50"
C31	445.00'	103.73'	52.10'	103.50'	N 01°11'14" W	13°21'21"
C32	445.00'	103.36'	51.91'	103.13'	N 12°08'40" E	13°18'28"
C33	445.00'	98.59'	49.50'	98.39'	N 25°08'43" E	12°41'38"
C34	445.00'	62.63'	31.37'	62.58'	N 35°31'27" E	8°03'49"
C35	2150.00'	53.25'	26.63'	53.25'	N 40°18'42" E	1°25'09"
C36	32.50'	51.58'	33.03'	46.33'	N 86°29'11" E	90°55'36"
C37	377.10'	100.85'	50.73'	100.55'	S 40°15'06" E	15°19'21"
C38	100.01'	51.02'	26.08'	50.47'	S 67°18'19" E	29°13'42"
C39	495.00'	31.21'	15.61'	31.21'	N 11°55'52" W	3°36'45"
C40	495.00'	15.94'	7.97'	15.94'	N 09°12'09" W	1°50'41"
C41	495.00'	47.81'	23.92'	47.79'	N 05°30'48" W	5°32'02"

CURVE	RADIUS	ARC LENGTH	TANGENT	CHORD LENGTH	CHORD BEARING	DELTA ANGLE
C50	2174.99'	59.45'	29.72'	59.44'	N 40°13'25" E	1°33'58"
C51	470.00'	476.88'	261.25'	456.69'	N 10°29'18" E	58°08'06"
C52	219.00'	255.34'	144.41'	241.12'	S 14°49'20" W	66°48'08"