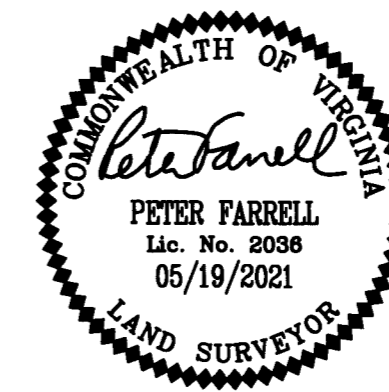


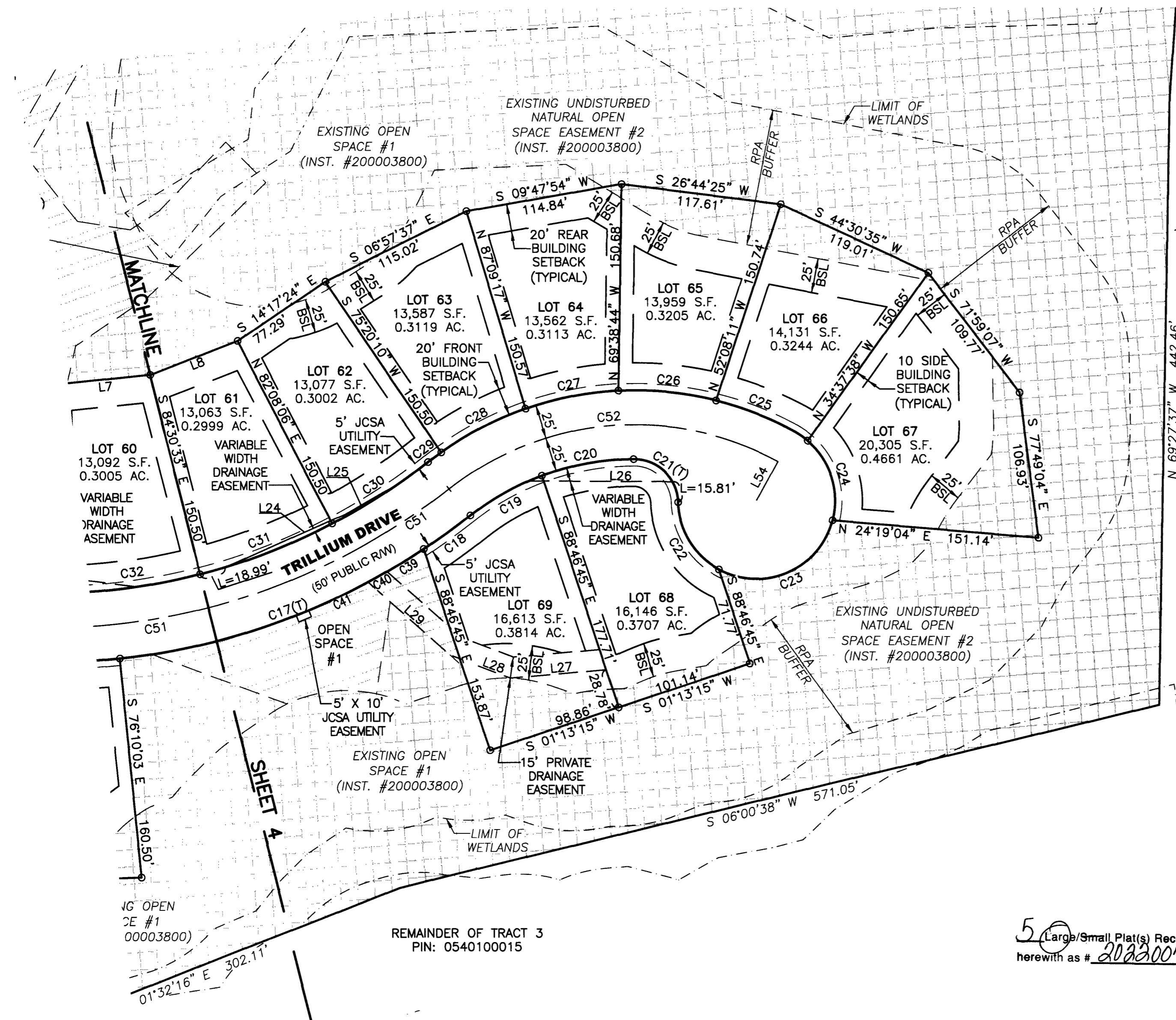
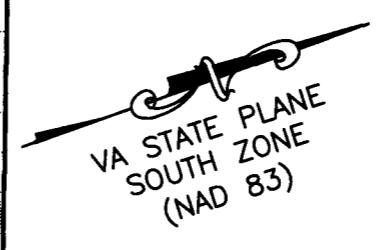
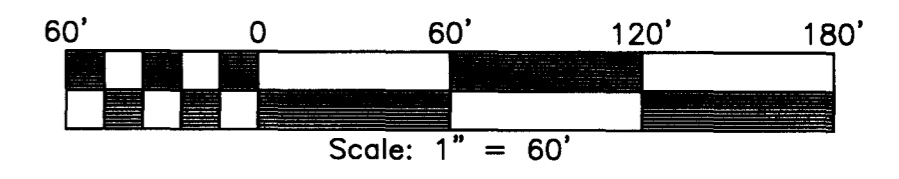
202200759



SUBDIVISION OF
STONEHOUSE TRACT 3
PARCEL "C"
CREATING
PARCEL "C" SECTION 3
LOT 54 THROUGH LOT 81

STONEHOUSE DISTRICT JAMES CITY COUNTY VIRGINIA
DATE: 05/19/2021 JOB # 17-378

LandTech Resources, Inc.
Engineering & Surveying Consultants
205 Bulifants Blvd., Suite F., Williamsburg, Virginia 23188
Phone: (757) 565-1677 Fax: (757) 565-0782
web: landtechresources.com
SHEET 4 OF 5
JCC-S-21-0025



REMAINDER OF TRACT 3
PIN: 0540100015

REMAINDER OF TRACT 3
PIN: 0540100015

5 Large/Small Plat(s) Recorded
herewith as # 202200759

City of Williamsburg & County of James City
Circuit Court: This PLAT was recorded on
January 19, 2022
at 9:46 AM/PM, PB PG
Document # 202200759
MONA A. FOLEY, CLERK
Mona A. Foley, Clerk

- EXISTING UNDISTURBED NATURAL OPEN SPACE EASEMENT
- THIS PLAT CREATES 2.589 ACRES OF OPEN SPACE #1.

BSL = RPA BUILDING SETBACK
(T) = TOTAL

SEE SHEET 5 FOR
LINE & CURVE TABLES

