

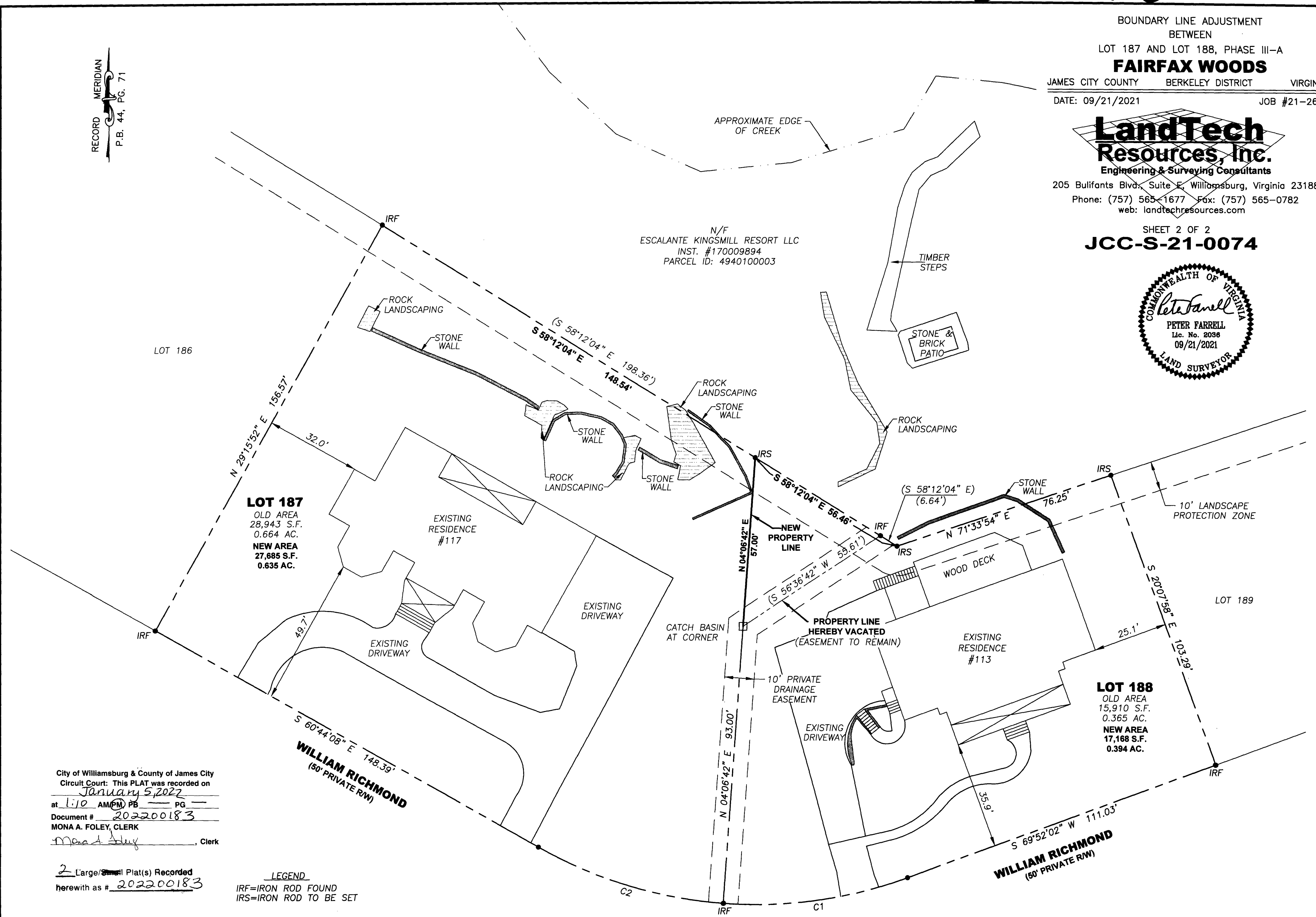
BOUNDARY LINE ADJUSTMENT
 BETWEEN
 LOT 187 AND LOT 188, PHASE III-A
FAIRFAX WOODS
 JAMES CITY COUNTY BERKELEY DISTRICT VIRGINIA
 DATE: 09/21/2021 JOB #21-265

LandTech Resources, Inc.
 Engineering & Surveying Consultants
 205 Bulifants Blvd., Suite E, Williamsburg, Virginia 23188
 Phone: (757) 565-1677 Fax: (757) 565-0782
 web: landtechresources.com

SHEET 2 OF 2
JCC-S-21-0074



RECORD MERIDIAN
 P.B. 44, PG. 71



LOT 187
 OLD AREA
 28,943 S.F.
 0.664 AC.
 NEW AREA
 27,685 S.F.
 0.635 AC.

LOT 188
 OLD AREA
 15,910 S.F.
 0.365 AC.
 NEW AREA
 17,168 S.F.
 0.394 AC.

City of Williamsburg & County of James City
 Circuit Court: This PLAT was recorded on
January 5, 2022
 at 1:10 AM (PM) PG
 Document # 202200183
 MONA A. FOLEY, CLERK
Mona A. Foley, Clerk

2 Large/~~Small~~ Plat(s) Recorded
 herewith as # 202200183

LEGEND
 IRF=IRON ROD FOUND
 IRS=IRON ROD TO BE SET

CURVE	RADIUS	ARC LENGTH	TANGENT	CHORD LENGTH	CHORD BEARING	DELTA ANGLE
C1	150.00'	63.47'	32.22'	63.00'	N 81°59'22" E	24°14'41"
C2	150.00'	65.85'	33.47'	65.32'	S 73°18'43" E	25°09'09"