

200020373

BOUNDARY LINE EXTINGUISHMENT

LOT 4
TIMBER CREEK ESTATES
& RESIDUAL PARCEL

JAMES CITY COUNTY STONEHOUSE DISTRICT VIRGINIA

DATE: 10/28/2020

JOB # 18-295



Engineering & Surveying Consultants

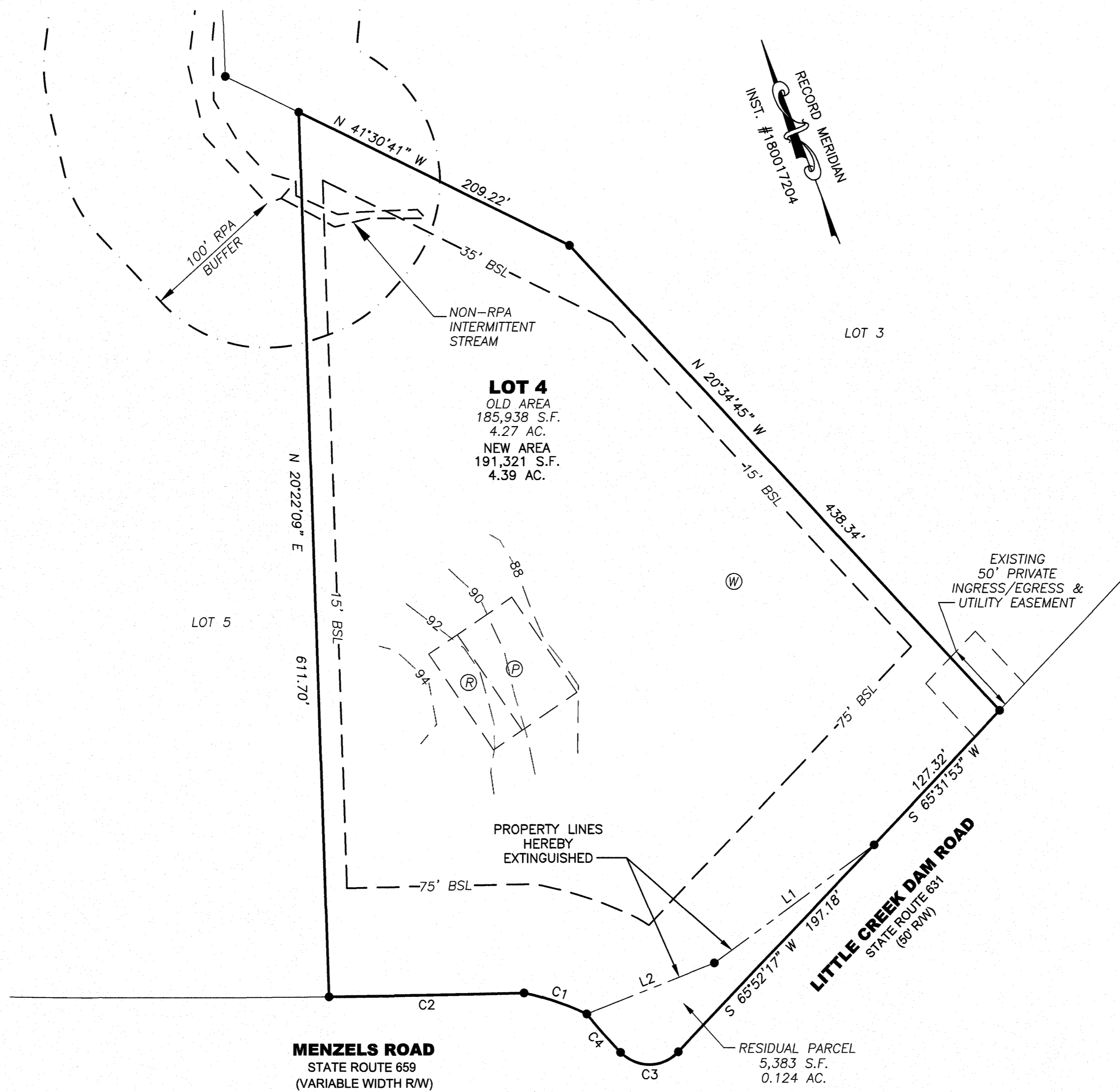
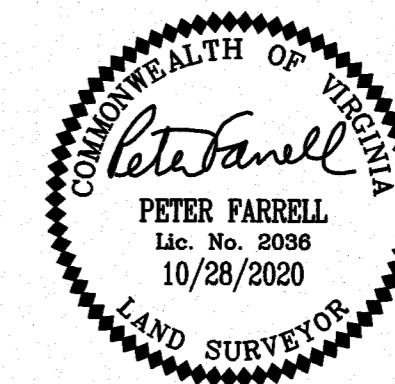
205 Bulifants Blvd., Suite E Williamsburg, Virginia 23188

Phone: (757) 565-1677 Fax: (757) 565-0782

web: landtechresources.com

SHEET 2 OF 2

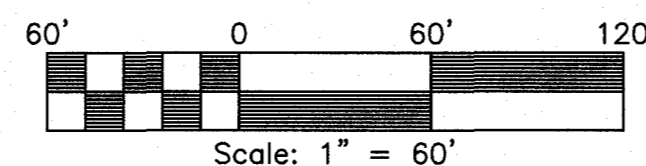
JCC-S-20-0057



CURVE	RADIUS	ARC LENGTH	CHORD LENGTH	CHORD BEARING	DELTA ANGLE
C1	200.00'	46.03'	45.93'	N 49°11'22" W	13°11'13"
C2	8387.30'	135.23'	135.23'	N 68°47'29" W	0°55'26"
C3	27.82'	44.88'	40.17'	N 68°21'08" W	92°26'04"
C4	373.83'	35.17'	35.16'	N 19°21'48" W	5°23'25"

LINE	BEARING	DISTANCE
L1	S 75°48'49" W	137.99'
L2	S 89°16'36" E	95.17'

NOTE:
PROPOSED DRAINFIELD AND WELL ARE SHOWN BASED ON PLAT OF TIMBER CREEK ESTATES, LOTS 1 THROUGH 5, RECORDED AS INST. #190012768.



2 Large Small Plat(s) Recorded
herewith as # 200020373

City of Williamsburg & County of James City
Circuit Court: This PLAT was recorded on
November 20, 2020

at: 1:36 AM PM PG
Document # 200020373
MONA A. FOLEY, CLERK

Mona A. Foley, Clerk