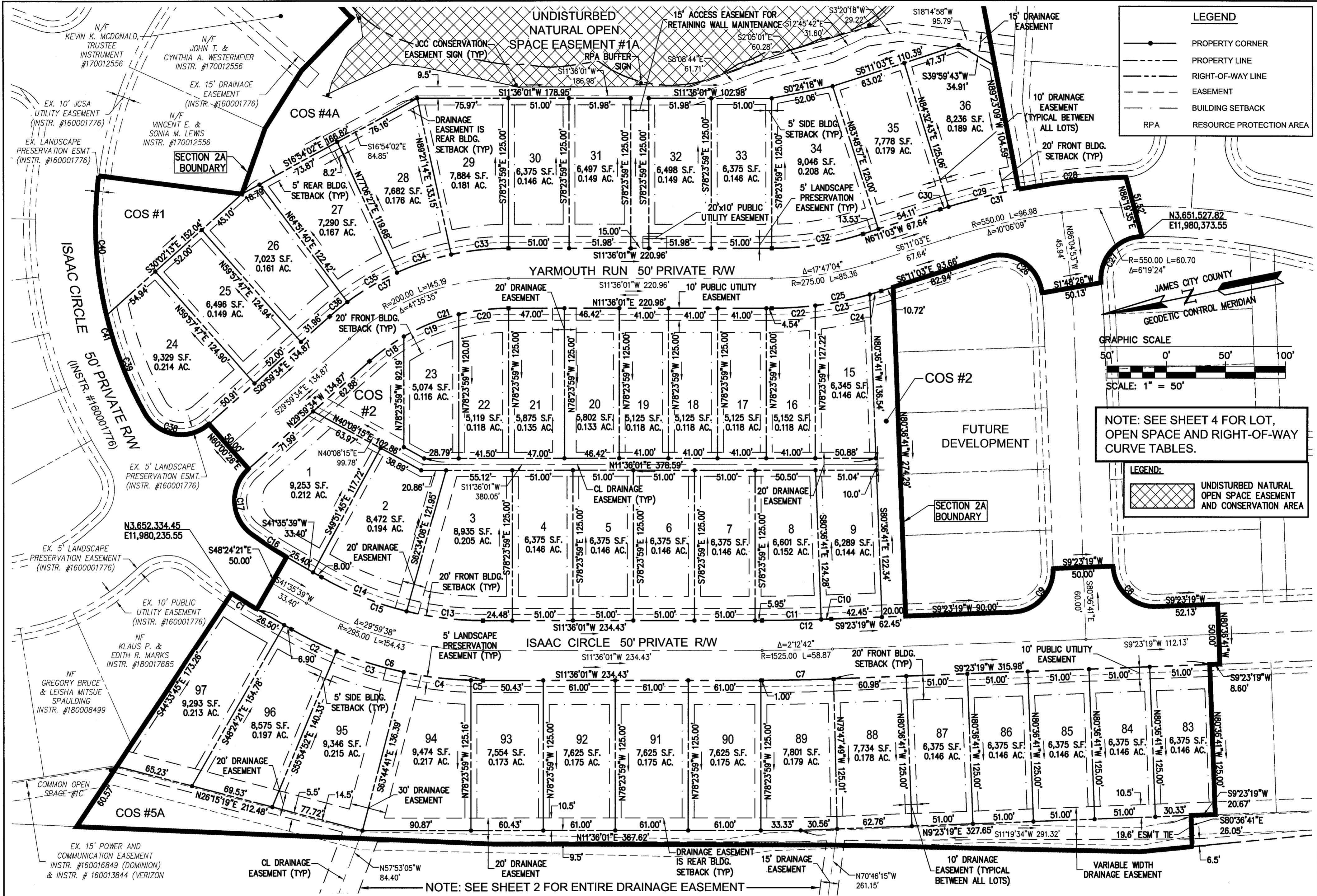


20020019



LEGEND

- PROPERTY CORNER
- PROPERTY LINE
- RIGHT-OF-WAY LINE
- EASEMENT
- BUILDING SETBACK
- RPA RESOURCE PROTECTION AREA

JAMES CITY COUNTY
GEODETIC CONTROL MERIDIAN

GRAPHIC SCALE
 50' 0' 50' 100'

SCALE: 1" = 50'

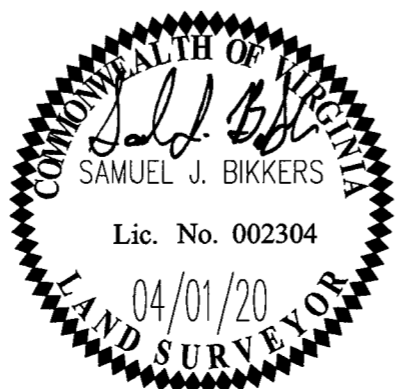
NOTE: SEE SHEET 4 FOR LOT, OPEN SPACE AND RIGHT-OF-WAY CURVE TABLES.

LEGEND:

- UNDISTURBED NATURAL OPEN SPACE EASEMENT AND CONSERVATION AREA

NOTE: SEE SHEET 2 FOR ENTIRE DRAINAGE EASEMENT

City of Williamsburg & County of James City
 Circuit Court: This PLAT was recorded on
Nov. 17, 2020
 at **10:29 AM** PM, PB PG
 Document # **200020019**
 MONA A. FOLEY, CLERK
 Clerk



AES
 CONSULTING ENGINEERS
 Hampton Roads | Central Virginia | Middle Peninsula
 5248 Olde Towne Road, Suite 1
 Williamsburg, Virginia 23188
 Phone: (757) 253-0040
 Fax: (757) 220-8994
 www.aesva.com

REF: S-20-0006
PLAT OF SUBDIVISION
 LOTS 1-9, 15-36, 83-97 & COS #1, #2, #4A & #5A
COLONIAL HERITAGE
PHASE VI - SECTION 2A
 OWNER / DEVELOPER: COLONIAL HERITAGE, LLC
 STONEHOUSE DISTRICT JAMES CITY COUNTY VIRGINIA

Project Contacts:	SJB/TRS
Project Number:	8881-62A
Scale:	1"=50'
Date:	05/22/19
Sheet Number	

Large/Small Plat(s) Recorded herewith as # 200020019

Rev.	Date	Description	DFG Revised By
1	04/01/20	REVISED PER COUNTY COMMENTS DATED 03/2020	