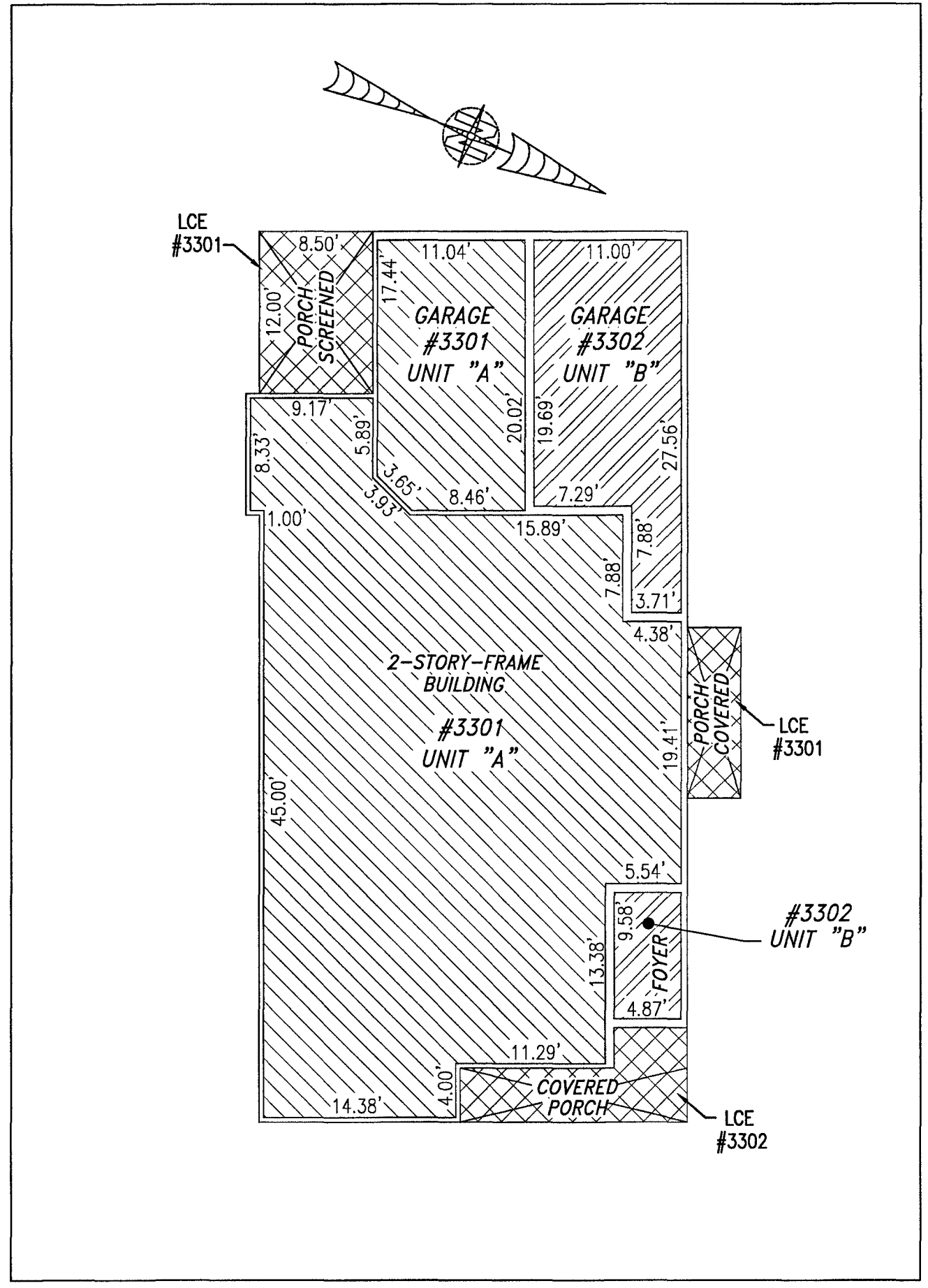
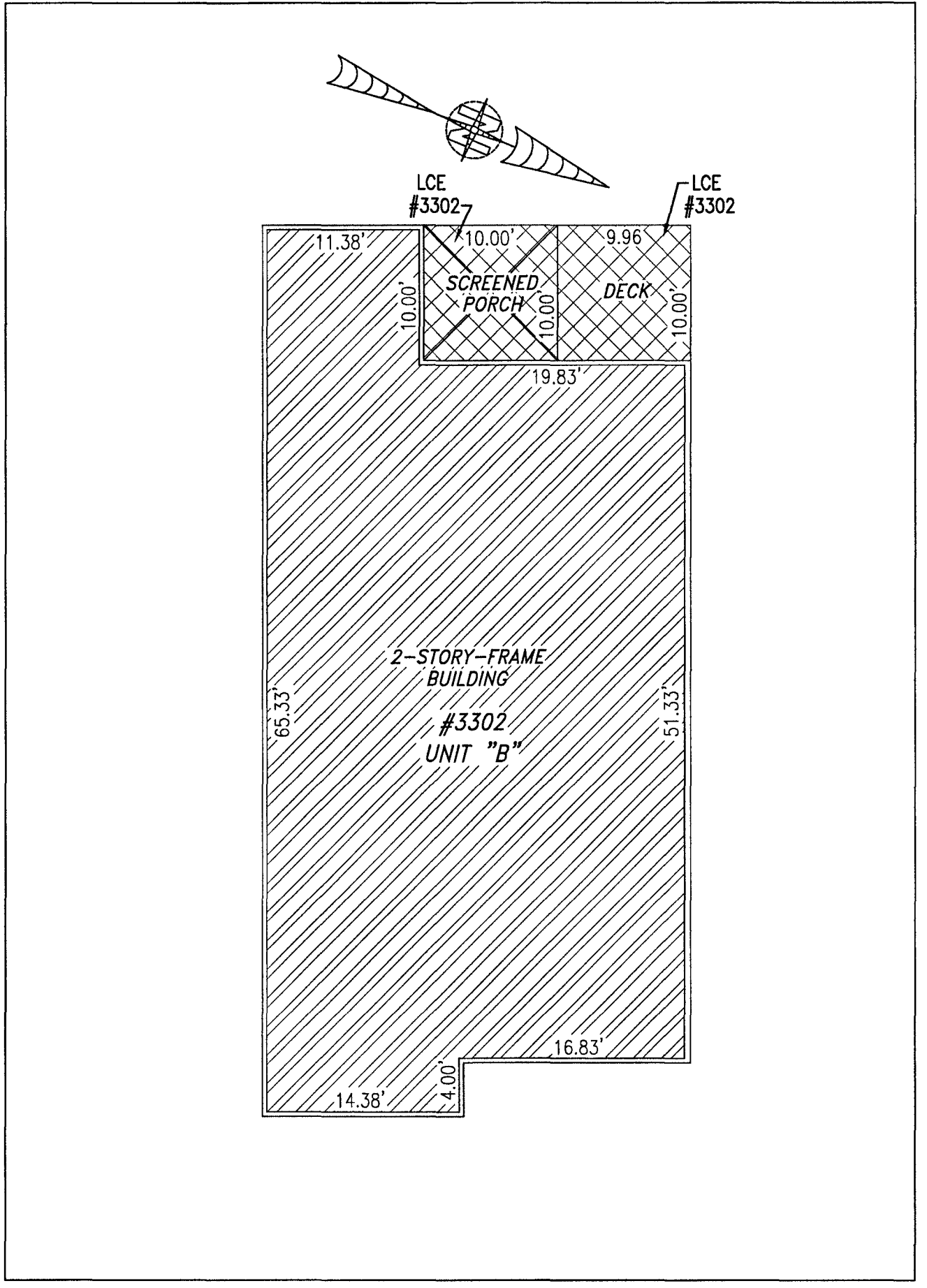


200017783

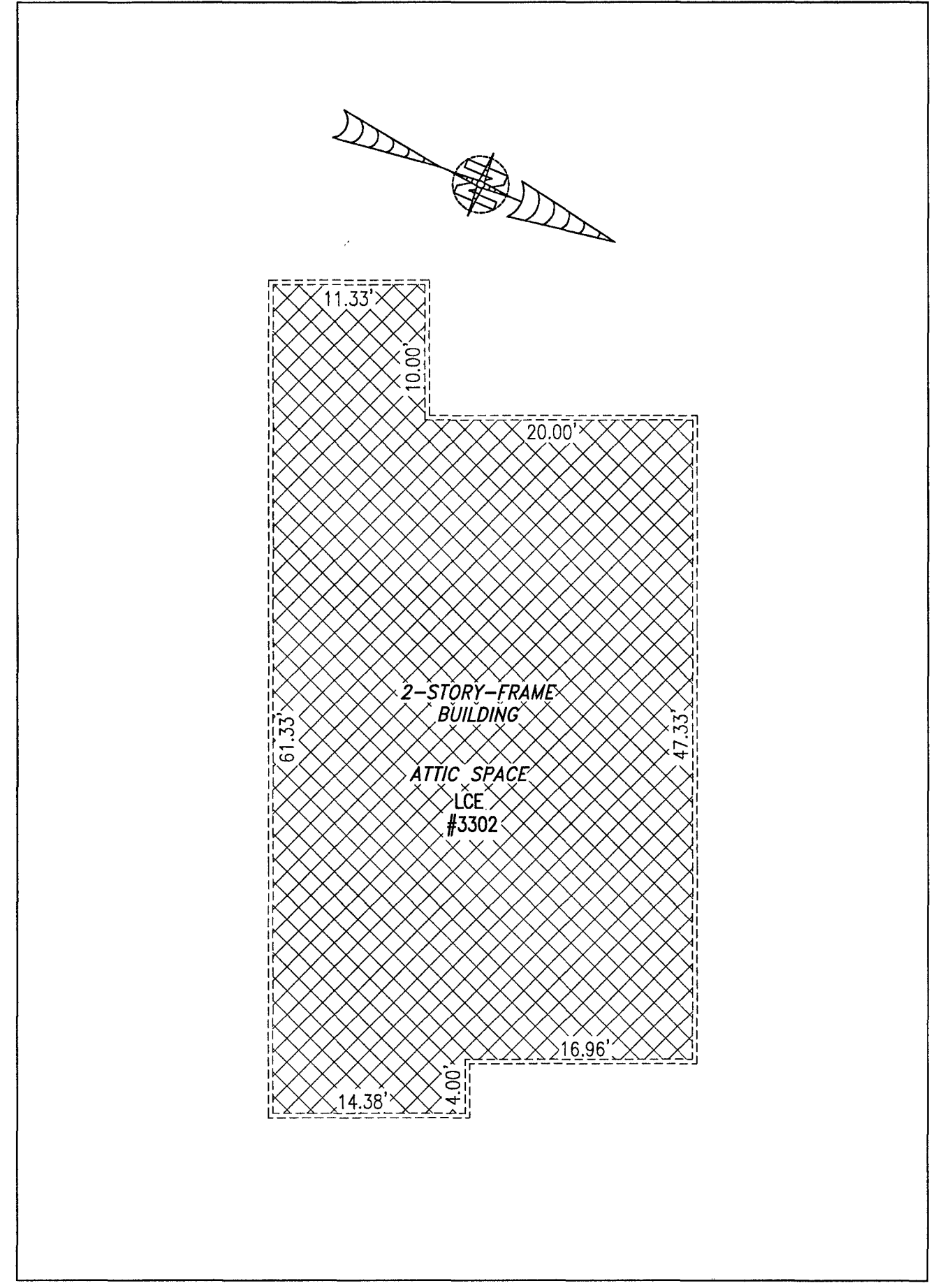
BUILDING 33 (DUPLEX)



FIRST FLOOR



SECOND FLOOR

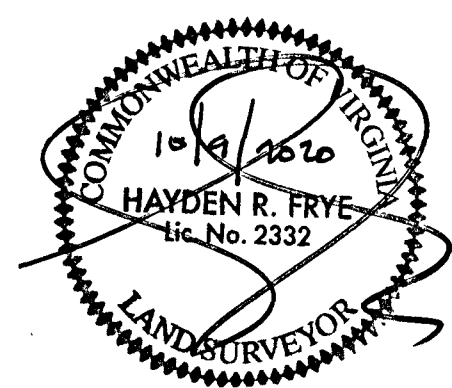


THIRD FLOOR

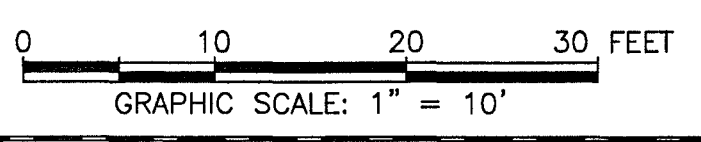
UNIT ID	UNIT DESCRIPTION	UNIT ADDRESS
A	-INDICATES AREA OF UNIT 3301	#3301 QUEEN'S PATH
B	-INDICATES AREA OF UNIT 3302	#3302 QUEEN'S PATH
	-INDICATES COMMON ELEMENT	
	-INDICATES LIMITED COMMON ELEMENT	

City of Williamsburg & County of James City
 Circuit Court: This PLAT was recorded on
October 21, 2020
 at 10:11 AM PM. FB PC
 Document # 200017783
 MONA A. FOLEY, CLERK
Monica Foley, Clerk

I HEREBY CERTIFY THAT THIS PLAT IS ACCURATE AND THAT IT
 COMPLIES WITH THE PROVISIONS OF THE CODE OF VIRGINIA OF 1950
 AS AMENDED, § 55.1-1920A & B AND I FURTHER CERTIFY THAT ALL
 IMPROVEMENTS THEREOF DEPICTED HEREON, PURSUANT TO THE CODE
 OF VIRGINIA § 55.1-1920B, ARE SUBSTANTIALLY COMPLETE.



5 Large/Small Plat(s) Recorded
 herewith as # 200017783



THIS SHEET: FLOOR PLANS

PHASE 33
CONDOMINIUM PLAT AND PLAN
 OF
THE PROMENADE
 AT
JOHN TYLER
 A CONDOMINIUM
 JAMES CITY COUNTY, VIRGINIA

Job# 160921

Hayden Frye and Associates, Inc.
Land Surveyors
 333 KELLAM ROAD, SUITE 200
 VIRGINIA BEACH, VA, 23462
 PH: (757) 491-7228 FX: (757) 491-7229

DATE: OCTOBER 1, 2020
 SCALE: 1"=10'
 SHEET 5 OF 5 THIS PHASE