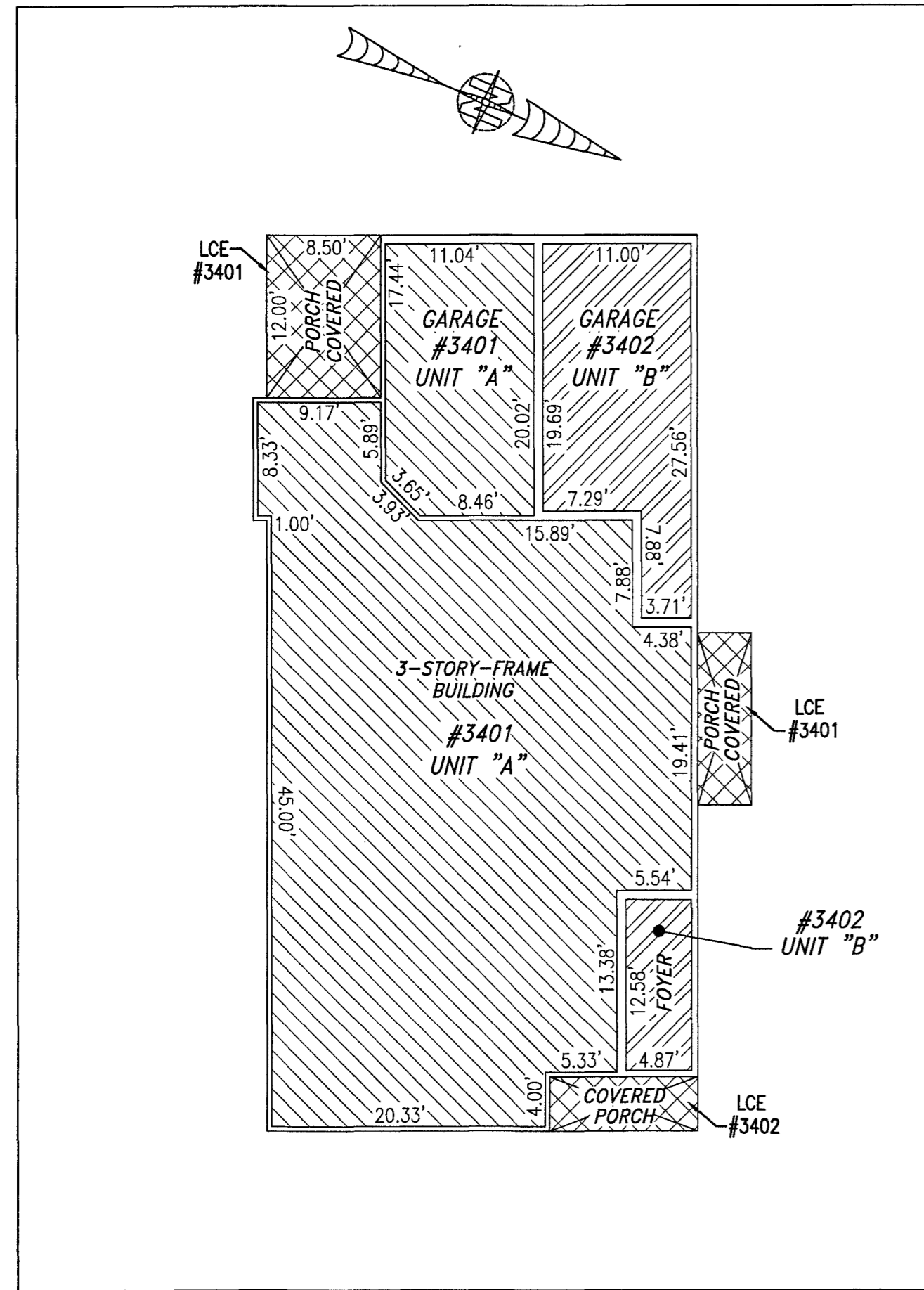
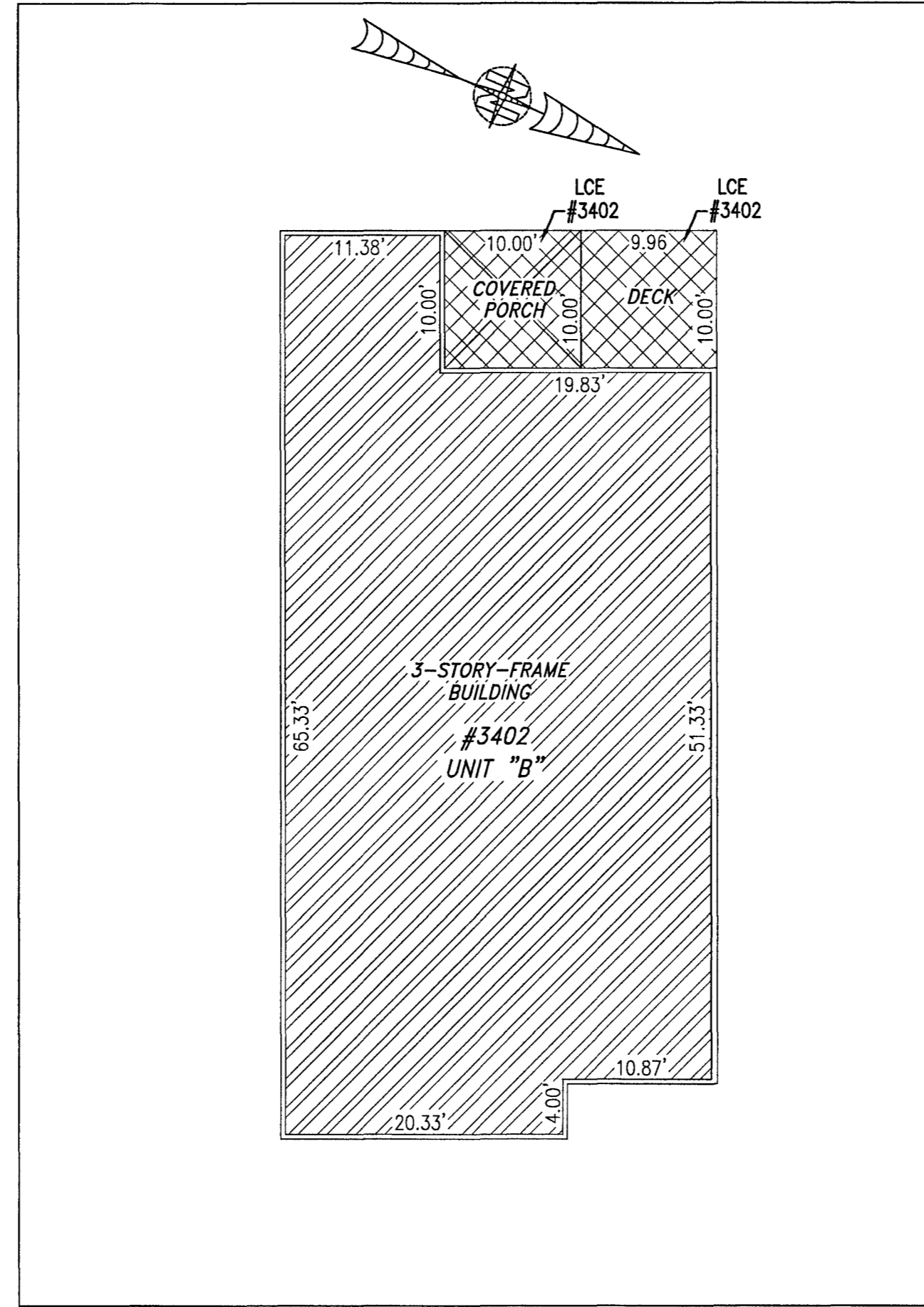


200017782

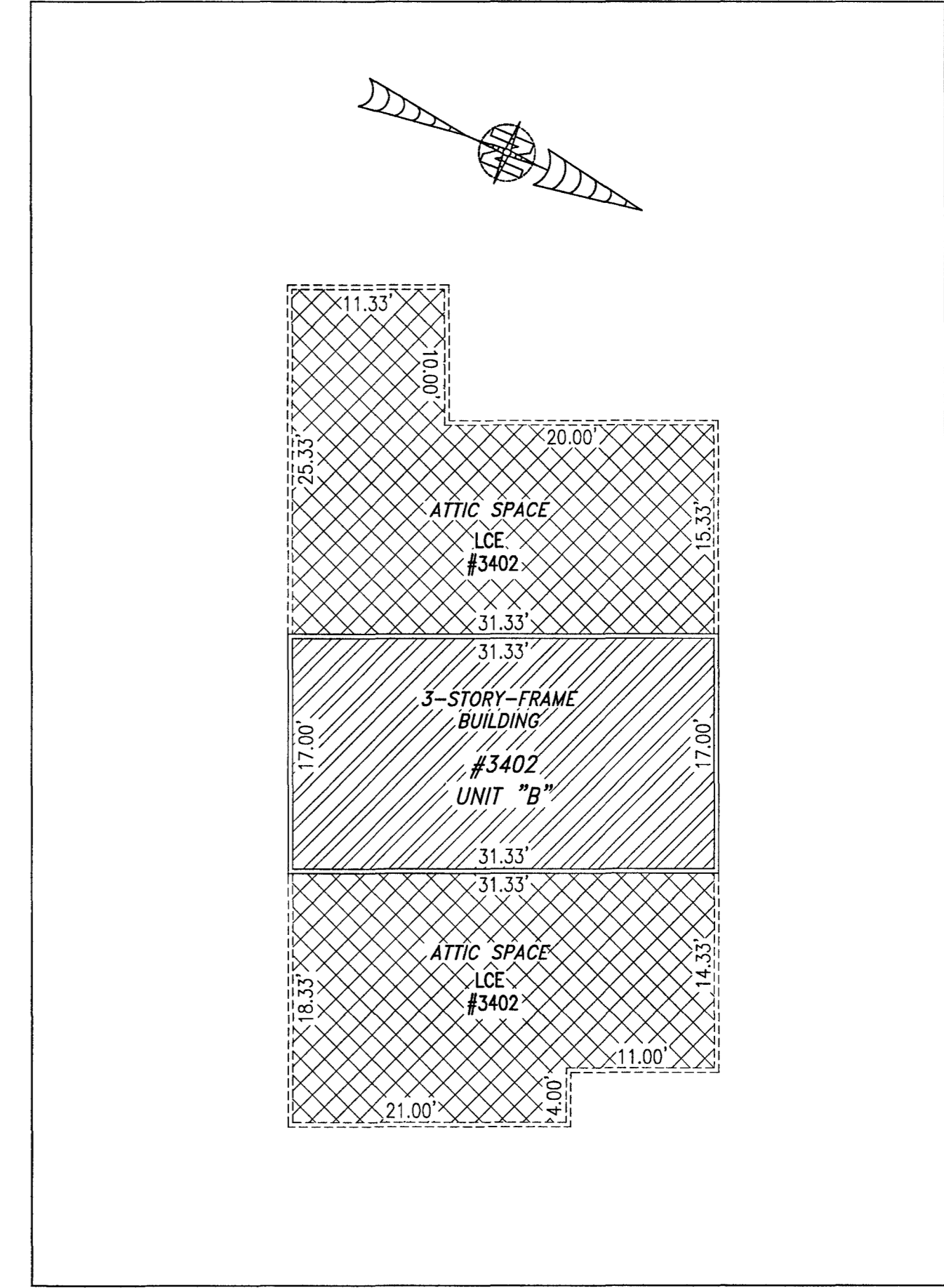
BUILDING 34 (DUPLEX)



FIRST FLOOR



SECOND FLOOR



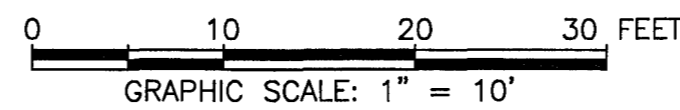
THIRD FLOOR

5 Large Small Plat(s) Recorded
herewith as # 200017782

I HEREBY CERTIFY THAT THIS PLAT IS ACCURATE AND THAT IT COMPLIES WITH THE PROVISIONS OF THE CODE OF VIRGINIA OF 1950 AS AMENDED, § 55.1-1920A & B AND I FURTHER CERTIFY THAT ALL IMPROVEMENTS THEREOF DEPICTED HEREON, PURSUANT TO THE CODE OF VIRGINIA § 55.1-1920B, ARE SUBSTANTIALLY COMPLETE.

UNIT ID	UNIT DESCRIPTION	UNIT ADDRESS
A	-INDICATES AREA OF UNIT 3401	#3401 QUEEN'S PATH
B	-INDICATES AREA OF UNIT 3402	#3402 QUEEN'S PATH
	-INDICATES COMMON ELEMENT	
	-INDICATES LIMITED COMMON ELEMENT	

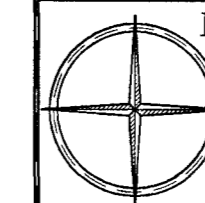
City of Williamsburg & County of James City
Circuit Court: This PLAT was recorded on
Oct. 21, 2020
at 10:10 AM, PB PG
Document # 200017782
MONA A. FOLEY, CLERK
Mona A. Foley, Clerk



THIS SHEET: FLOOR PLANS

PHASE 34
CONDOMINIUM PLAT AND PLAN
OF
THE PROMENADE
AT
JOHN TYLER
A CONDOMINIUM
JAMES CITY COUNTY, VIRGINIA

Job# 160921



Hayden Frye and Associates, Inc.

Land Surveyors

333 KELLAM ROAD, SUITE 200
VIRGINIA BEACH, VA., 23462
PH: (757) 491-7228 FX:(757) 491-7229

DATE: SEPTEMBER 18, 2020

SCALE: 1"=10'

SHEET 5 OF 5 THIS PHASE