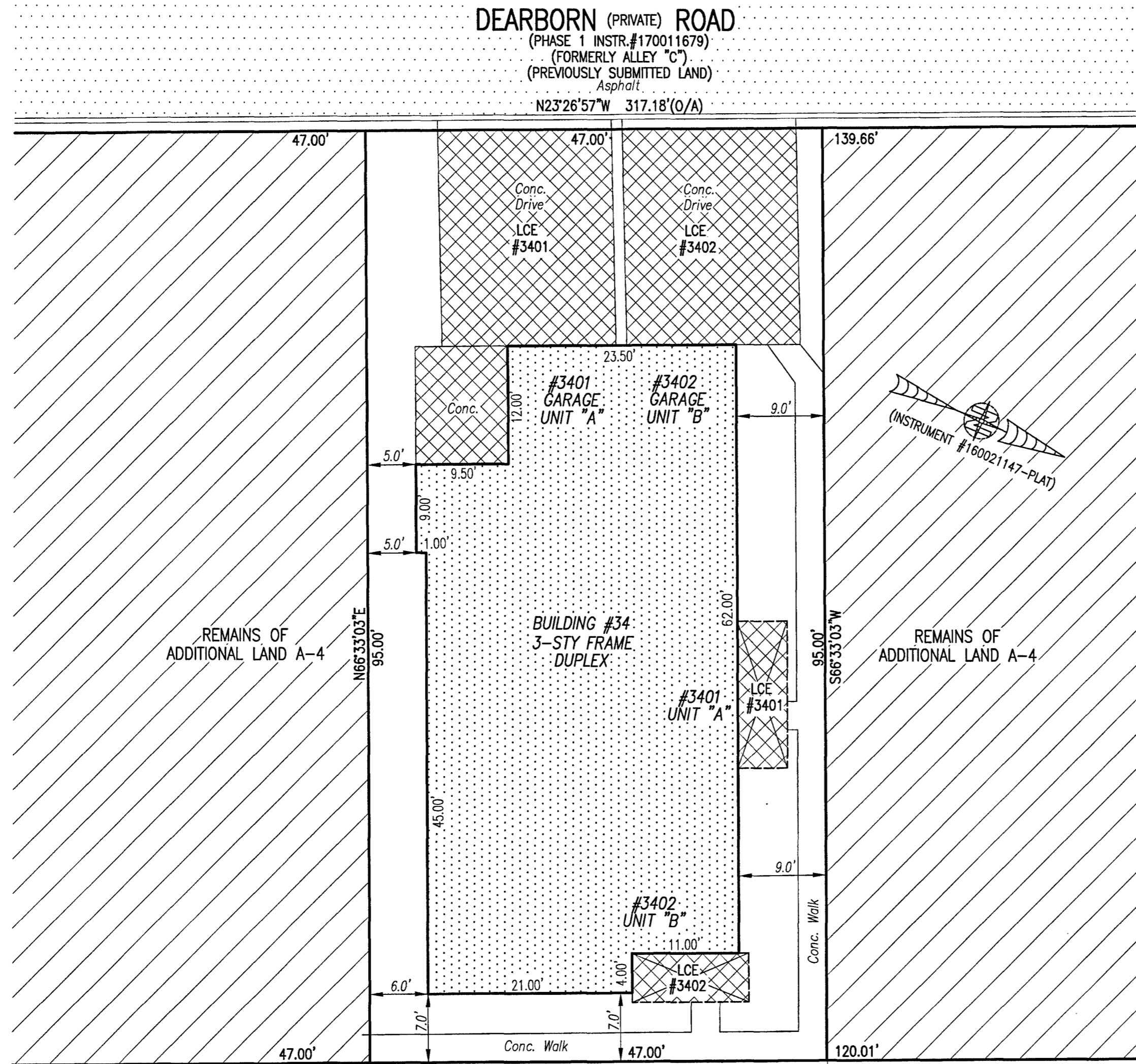


200017782

I HEREBY CERTIFY THAT THIS PLAT IS ACCURATE AND THAT IT COMPLIES WITH THE PROVISIONS OF THE CODE OF VIRGINIA OF 1950 AS AMENDED, § 55.1-1920A & B AND I FURTHER CERTIFY THAT ALL IMPROVEMENTS THEREOF DEPICTED HEREON, PURSUANT TO THE CODE OF VIRGINIA § 55.1-1920A, ARE SUBSTANTIALLY COMPLETE.



- INDICATES PREVIOUSLY SUBMITTED LAND
- INDICATES BUILDING AREA (SEE PLANS FOR UNIT DIMENSIONS)
- INDICATES LIMITED COMMON ELEMENT (LCE) ASSIGNED TO A UNIT # UNIT ASSIGNED
- INDICATES COMMON ELEMENT (EXCLUDING AREAS OUTSIDE SUBMITTED LAND)
- INDICATES ADDITIONAL LAND

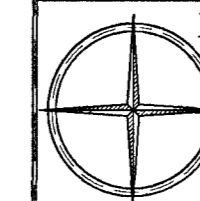
5 Large/Small Plat(s) Recorded
herewith as # 200017782

City of Williamsburg & County of James City
Circuit Court: This PLAT was recorded on
04.21.2020
at 10:10 AM, PB PG
Document # 200017782
MONA A. FOLEY, CLERK
Mona A. Foley, Clerk

THIS SHEET: BUILDING DETAIL

PHASE 34
CONDOMINIUM PLAT AND PLAN
OF
THE PROMENADE
AT
JOHN TYLER
A CONDOMINIUM
JAMES CITY COUNTY, VIRGINIA

Jo# 160921



Hayden Frye and Associates, Inc.
Land Surveyors

333 KELLAM ROAD, SUITE 200
VIRGINIA BEACH, VA., 23462
PH: (757) 491-7228 FX: (757) 491-7229

DATE: SEPTEMBER 18, 2020

SCALE: 1"=10'

SHEET 3 OF 5 THIS PHASE

0 10 20 30 FEET
GRAPHIC SCALE: 1" = 10'

S23°26'49"E 310.88'(0/A)
Asphalt
QUEEN'S (PRIVATE) PATH
(PHASE 1 INSTR.#170011679)
(PREVIOUSLY SUBMITTED LAND)

DEARBORN (PRIVATE) ROAD
(PHASE 1 INSTR.#170011679)
(FORMERLY ALLEY "C")
(PREVIOUSLY SUBMITTED LAND)
Asphalt
N23°26'57"W 317.18'(0/A)