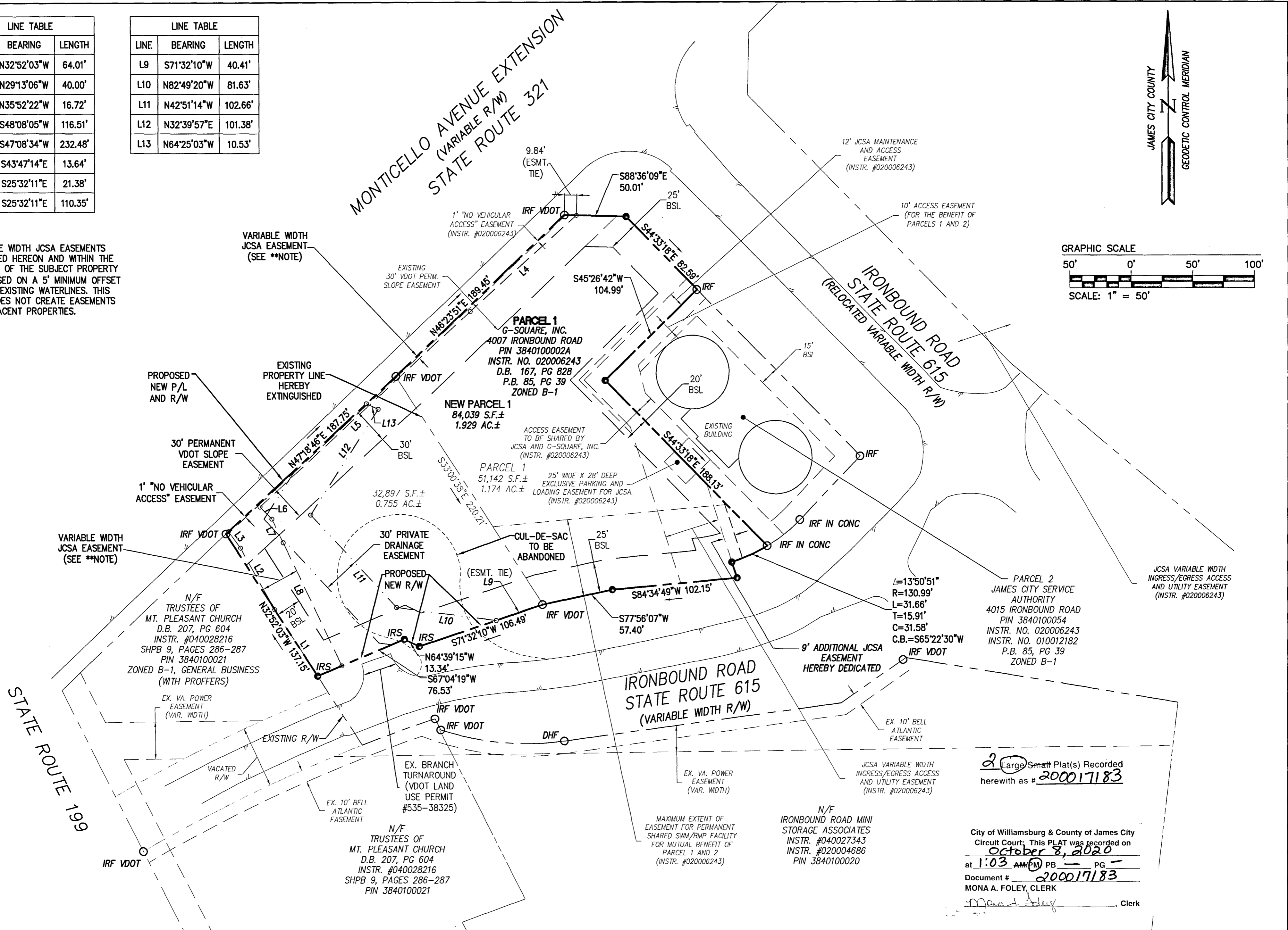


200017183

LINE	BEARING	LENGTH
L1	N32°52'03"W	64.01'
L2	N29°13'06"W	40.00'
L3	N35°52'22"W	16.72'
L4	S48°08'05"W	116.51'
L5	S47°08'34"W	232.48'
L6	S43°47'14"E	13.64'
L7	S25°32'11"E	21.38'
L8	S25°32'11"E	110.35'

LINE	BEARING	LENGTH
L9	S71°32'10"W	40.41'
L10	N82°49'20"W	81.63'
L11	N42°51'14"W	102.66'
L12	N32°39'57"E	101.38'
L13	N64°25'03"W	10.53'

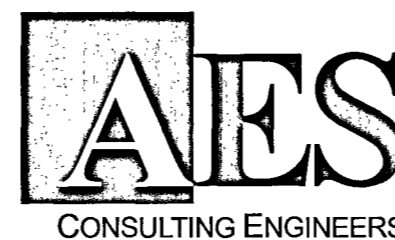
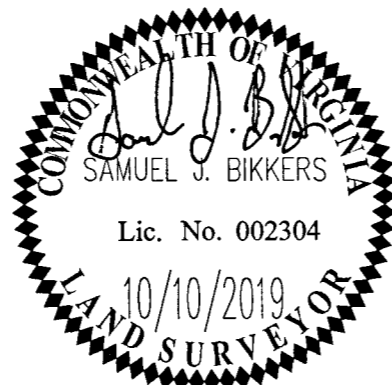
****NOTE:**
VARIABLE WIDTH JCSA EASEMENTS PROPOSED HEREON AND WITHIN THE EXTENTS OF THE SUBJECT PROPERTY ARE BASED ON A 5' MINIMUM OFFSET TO THE EXISTING WATERLINES. THIS PLAT DOES NOT CREATE EASEMENTS ON ADJACENT PROPERTIES.



2 Large Small Plat(s) Recorded herewith as # 200017183

City of Williamsburg & County of James City
Circuit Court, This PLAT was recorded on
October 3, 2020
at 1:03 AM (PM) PB PG -
Document # 200017183
MONA A. FOLEY, CLERK

Rev.	Date	Description	Revised By



5248 Olde Towne Road, Suite 1
Williamsburg, Virginia 23188
Phone: (757) 253-0040
Fax: (757) 220-8994
www.aesva.com

Hampton Roads | Central Virginia | Middle Peninsula

JCC Case No. S-19-0104

PLAT OF PROPERTY LINE EXTINGUISHMENT
4007 IRONBOUND ROAD
OWNED BY G-SQUARE, INC.

JAMESTOWN DISTRICT JAMES CITY COUNTY VIRGINIA

Project Contacts:	SJB/JFS
Project Number:	W10481
Scale:	1" = 50'
Date:	10/10/19
Sheet Number	2 of 2