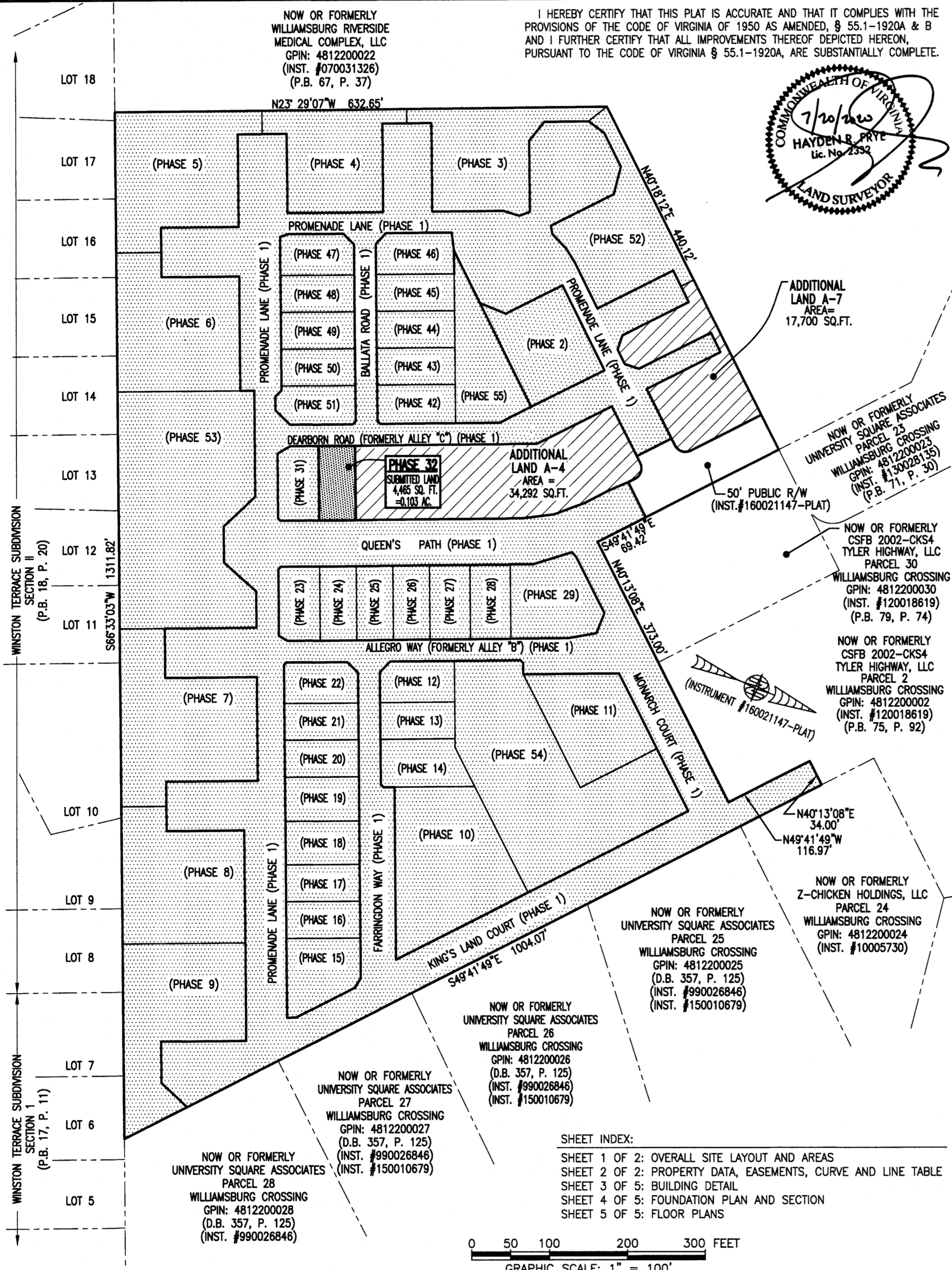
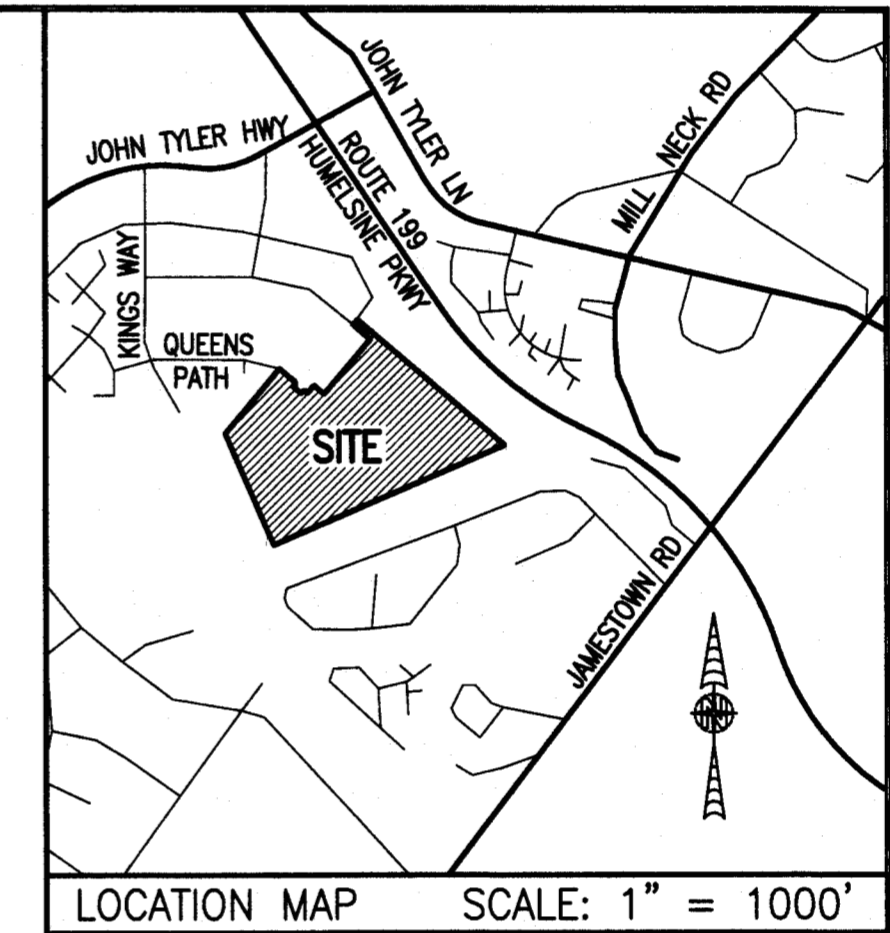


200011631



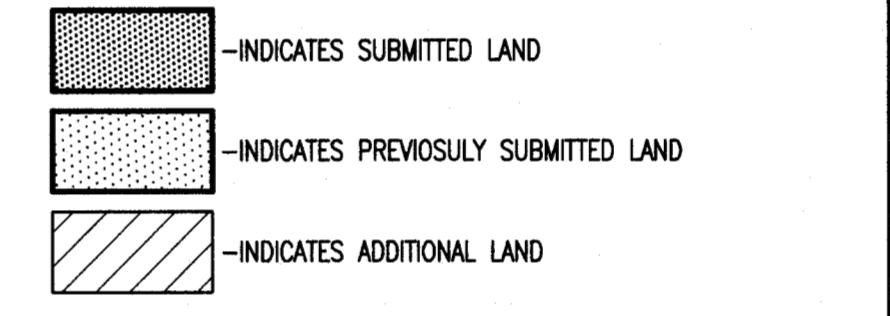
AREA TABLE				
PHASE	BLDG#	STATUS/RECORDATION	SQUARE FEET	ACRES
1	N/A	INSTR.#170011679	268,468	6.163
2	2	INSTR.#200001502	13,027	0.299
3	3	INSTR.#190014842	19,053	0.437
4	4	INSTR.#190007409	17,652	0.405
5	5	INSTR.#190001499	26,166	0.601
6	6	INSTR.#180018358	24,875	0.571
7	7	INSTR.#180014663	28,822	0.662
8	8	INSTR.#180010369	24,539	0.563
9	9	INSTR.#180003694	25,978	0.596
10	10	INSTR.#170023466	25,806	0.592
11	11	INSTR.#200008161	14,876	0.341
12	12	INSTR.#180016847	4,949	0.114
13	13	INSTR.#180010007	4,512	0.104
14	14	INSTR.#180009579	6,462	0.148
15	15	INSTR.#190001143	7,841	0.180
16	16	INSTR.#190001141	4,467	0.103
17	17	INSTR.#190001140	4,467	0.103
18	18	INSTR.#180019704	5,273	0.121
19	19	INSTR.#180019705	5,367	0.123
20	20	INSTR.#180016210	4,465	0.103
21	21	INSTR.#180016209	4,465	0.103
22	22	INSTR.#180016208	4,892	0.112
23	23	INSTR.#180001768	5,014	0.115
24	24	INSTR.#180005480	4,464	0.102
25	25	INSTR.#180001779	4,466	0.103
26	26	INSTR.#170021156	4,465	0.102
27	27	INSTR.#170021157	4,944	0.114
28	28	INSTR.#180001781	4,936	0.113
29	29	NOT YET RECORDED	10,569	0.243
31	31	NOT YET RECORDED	4,942	0.113
32	32	SUBSTANTIALLY COMPLETE	4,465	0.103
42	42	INSTR.#200004489	4,974	0.114
43	43	INSTR.#200003789	4,722	0.108
44	44	INSTR.#200003372	4,722	0.108
45	45	INSTR.#200002243	4,722	0.108
46	46	INSTR.#200000900	5,153	0.118
47	47	INSTR.#190009757	4,879	0.112
48	48	INSTR.#190010971	4,465	0.103
49	49	INSTR.#190011650	4,465	0.102
50	50	INSTR.#190013854	4,465	0.103
51	51	INSTR.#190014841	4,848	0.111
52	1	INSTR.#190017561	18,301	0.420
53	N/A	INSTR.#180014662	49,886	1.145
54	N/A	INSTR.#190007408	43,080	0.989
55	N/A	INSTR.#190011651	11,268	0.259
ADDITIONAL LAND A-4			34,292	0.787
ADDITIONAL LAND A-7			17,700	0.406
TOTAL: NEW PARCEL 29			816,629	18.747



LEGAL DESCRIPTION
PROPERTY SHOWN HEREON BEING "NEW PARCEL 29" CONTAINING 18.747 ACRES AS SHOWN ON "PLAT OF LOT LINE EXTINGUISHMENT BEING PARCELS 20 AND 29 OF WILLIAMSBURG CROSSING" PREPARED BY AES CONSULTING ENGINEERS, DATED 10-24-16 AND RECORDED AS INSTRUMENT NO. 160021147.

- NOTES:
- PHASE 32 BUILDING 32 IS SUBSTANTIALLY COMPLETE.
 - EASEMENTS AND BUILDING LINES SHOWN HEREON PER THE FOLLOWING:
 - ALTA SURVEY BY AES CONSULTING ENGINEERS, DATED 3-23-15
 - PLAT BY AES CONSULTING ENGINEERS, DATED 10-24-16, INST. #160021147
 - PLAN OF DEVELOPMENT BY AES CONSULTING ENGINEERS, DATED 9-8-16

City of Williamsburg & County of James City Circuit Court
This PLAT was recorded on 7/30/2020
at 9:23 AM, PB PG
Document # 200011631
MONA A. FOLEY, CLERK



THIS SHEET: OVERALL SITE LAYOUT AND AREAS

PHASE 32
CONDOMINIUM PLAT AND PLAN
OF
THE PROMENADE
AT
JOHN TYLER
A CONDOMINIUM
JAMES CITY COUNTY, VIRGINIA

Hayden Frye and Associates, Inc.
Land Surveyors
333 KELLAM ROAD, SUITE 200
VIRGINIA BEACH, VA, 23462
PH: (757) 491-7228 FX: (757) 491-7229

DATE: JULY 14, 2020
SCALE: 1"=100'
SHEET 1 OF 5 THIS PHASE

Large Plat(s) Recorded herewith as # 200011631
JCC Subdivision Agent Approval Not Required
Hayden Frye and Associates, Inc. JCC Subdivision Agent Approval Not Required
DATE: JULY 14, 2020