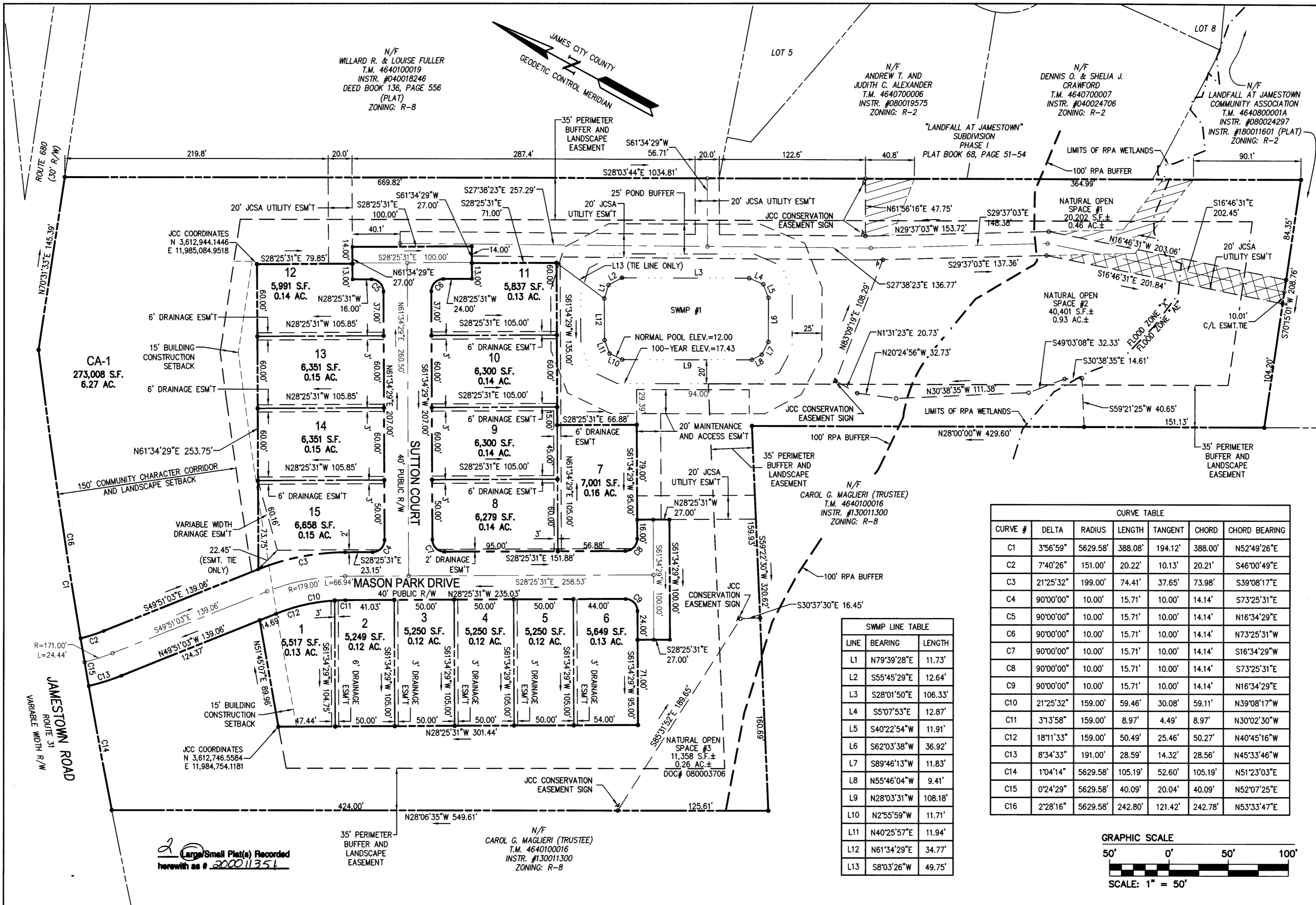


200011351

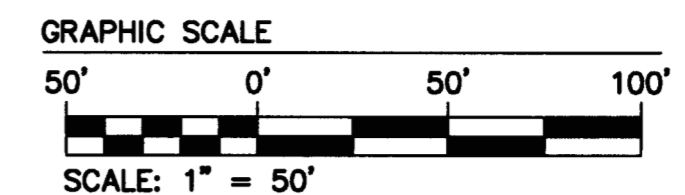


CURVE TABLE

CURVE #	DELTA	RADIUS	LENGTH	TANGENT	CHORD	CHORD BEARING
C1	3°56'59"	5629.58'	388.08'	194.12'	388.00'	N52°49'26"E
C2	7°40'26"	151.00'	20.22'	10.13'	20.21'	S46°00'49"E
C3	21°25'32"	199.00'	74.41'	37.65'	73.98'	S39°08'17"E
C4	90°00'00"	10.00'	15.71'	10.00'	14.14'	S73°25'31"E
C5	90°00'00"	10.00'	15.71'	10.00'	14.14'	N16°34'29"E
C6	90°00'00"	10.00'	15.71'	10.00'	14.14'	N73°25'31"W
C7	90°00'00"	10.00'	15.71'	10.00'	14.14'	S16°34'29"W
C8	90°00'00"	10.00'	15.71'	10.00'	14.14'	S73°25'31"E
C9	90°00'00"	10.00'	15.71'	10.00'	14.14'	N16°34'29"E
C10	21°25'32"	159.00'	59.46'	30.08'	59.11'	N39°08'17"W
C11	31°3'58"	159.00'	8.97'	4.49'	8.97'	N30°02'30"W
C12	18°11'33"	159.00'	50.49'	25.46'	50.27'	N40°45'16"W
C13	8°34'33"	191.00'	28.59'	14.32'	28.56'	N45°33'46"W
C14	1°04'14"	5629.58'	105.19'	52.60'	105.19'	N51°23'03"E
C15	0°24'29"	5629.58'	40.09'	20.04'	40.09'	N52°07'25"E
C16	2°28'16"	5629.58'	242.80'	121.42'	242.78'	N53°33'47"E

SWMP LINE TABLE

LINE	BEARING	LENGTH
L1	N79°39'28"E	11.73'
L2	S55°45'29"E	12.64'
L3	S28°01'50"E	106.33'
L4	S5°07'53"E	12.87'
L5	S40°22'54"W	11.91'
L6	S62°03'38"W	36.92'
L7	S89°46'13"W	11.83'
L8	N55°46'04"W	9.41'
L9	N28°03'31"W	108.18'
L10	N2°55'59"W	11.71'
L11	N40°25'57"E	11.94'
L12	N61°34'29"E	34.77'
L13	S8°03'26"W	49.75'



2 Large/Small Plat(s) Recorded herewith as # 200011351

City of Williamsburg & County of James City  
 Circuit Court: This PLAT was recorded on July 27, 2020  
 at 10:54 AM PM, PG  
 Document # 200011351  
 MONA A. FOLEY, CLERK  
 Clerk



**AES**  
 CONSULTING ENGINEERS  
 Hampton Roads | Central Virginia | Middle Peninsula  
 5248 Olde Towne Road, Suite 1  
 Williamsburg, Virginia 23188  
 Phone: (757) 253-0040  
 Fax: (757) 220-8994  
 www.aesva.com

JCC CASE NO. S-20-0008  
 PLAT OF SUBDIVISION  
**MASON PARK**  
 LOTS 1-15  
 JAMESTOWN DISTRICT JAMES CITY COUNTY VIRGINIA

Project Contacts: JAG/SJB  
 Project Number: 9676-02  
 Scale: 1"=50' Date: 2-4-2020  
 Sheet Number  
**2 OF 2**

Rev.	Date	Description	Revised By
1	06/09/2020	PLAT HAS BEEN REVISED PER COUNTY COMMENTS DATED MARCH 6, 2020	JFS