
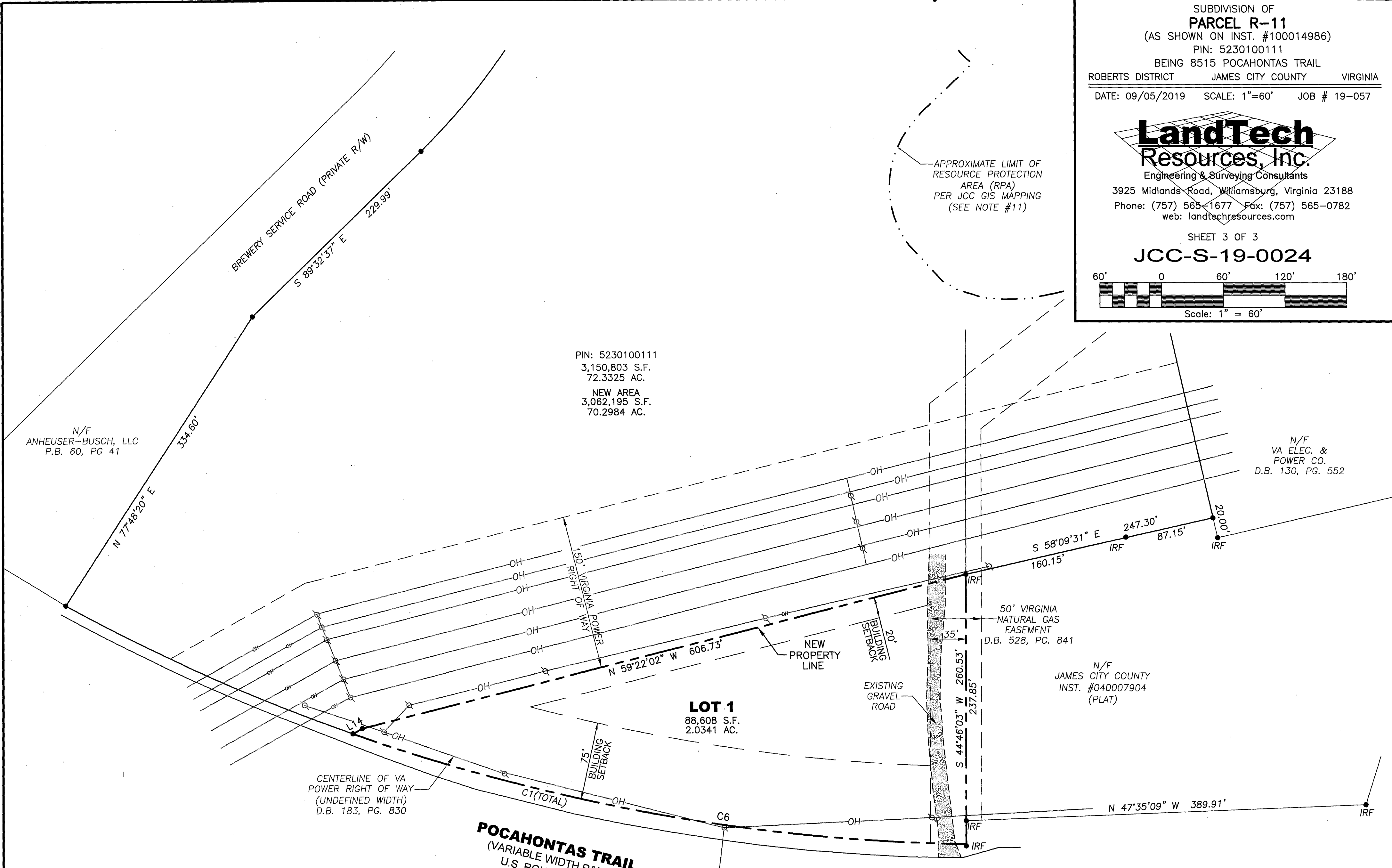


20009019

SUBDIVISION OF
PARCEL R-11
 (AS SHOWN ON INST. #100014986)
 PIN: 5230100111
 BEING 8515 POCAHONTAS TRAIL
 ROBERTS DISTRICT JAMES CITY COUNTY VIRGINIA
 DATE: 09/05/2019 SCALE: 1"=60' JOB # 19-057

LandTech
Resources, Inc.
 Engineering & Surveying Consultants
 3925 Midlands Road, Williamsburg, Virginia 23188
 Phone: (757) 565-1677 Fax: (757) 565-0782
 web: landtechresources.com

SHEET 3 OF 3
JCC-S-19-0024

 Scale: 1" = 60'



PIN: 5230100111
 3,150,803 S.F.
 72.3325 AC.
 NEW AREA
 3,062,195 S.F.
 70.2984 AC.

N/F
 ANHEUSER-BUSCH, LLC
 P.B. 60, PG. 41

N/F
 VA ELEC. &
 POWER CO.
 D.B. 130, PG. 552

N/F
 JAMES CITY COUNTY
 INST. #040007904
 (PLAT)

CENTERLINE OF VA
 POWER RIGHT OF WAY
 (UNDEFINED WIDTH)
 D.B. 183, PG. 830

NOTE:
 PER STATE HIGHWAY COMMISSION PLANS APPROVED 12/19/1921
 THE DESIGN WIDTH OF THE U.S. ROUTE 60 R/W ADJACENT TO
 THIS PROPERTY WAS 50'. ROUTE 60 IS SHOWN AS A 50' R/W ON
 P.B. 33, PG. 35 & AS A 50' MINIMUM R/W ON P.B. 81, PG. 85.

LINE	BEARING	DISTANCE
L14	N 74°06'40" W	10.44'

CURVE	RADIUS	ARC	CHORD	CHORD BEARING	DELTA
C6	1,884.86'	609.71'	607.06'	N 35°02'57" W	18°32'02"



City of Williamsburg & County of James City
 Circuit Court: This PLAT was recorded on
 June 23, 2020
 at 12:16 AM/PM, PG. —
 Document # 20009019
 MONA A. FOLEY, CLERK
 Clerk

SUBDIVISION DETAIL
 (SEE OVERALL PARCEL SHEET 1)

3 Large/Small Plats recorded
 herewith as 20009019

AREA TABULATION

PARCEL	OLD AREA	NEW AREA
PIN: 5230100111	3,150,803 S.F. / 72.3325 AC.	3,062,195 S.F. / 70.2984 AC.
LOT 1		88,608 S.F. / 2.0341 AC.

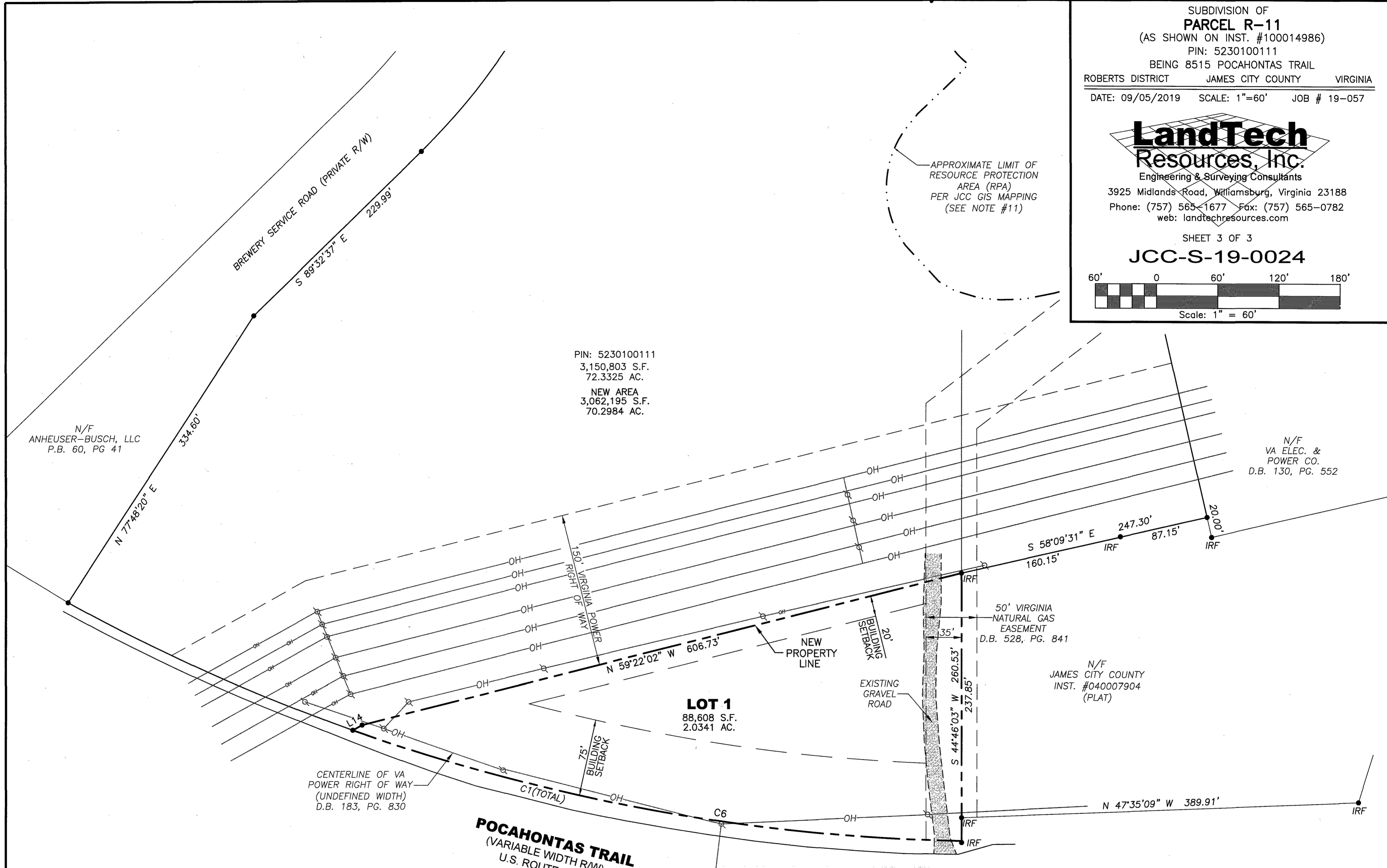
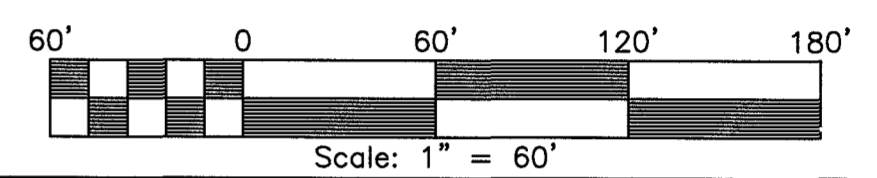
TOTAL AREA = 3,150,803 S.F. / 72.3325 AC.

200009019

SUBDIVISION OF
PARCEL R-11
 (AS SHOWN ON INST. #100014986)
 PIN: 5230100111
 BEING 8515 POCAHONTAS TRAIL
 ROBERTS DISTRICT JAMES CITY COUNTY VIRGINIA
 DATE: 09/05/2019 SCALE: 1"=60' JOB # 19-057

LandTech
Resources, Inc.
 Engineering & Surveying Consultants
 3925 Midlands Road, Williamsburg, Virginia 23188
 Phone: (757) 565-1677 Fax: (757) 565-0782
 web: landtechresources.com

SHEET 3 OF 3
JCC-S-19-0024



PIN: 5230100111
 3,150,803 S.F.
 72.3325 AC.
 NEW AREA
 3,062,195 S.F.
 70.2984 AC.

N/F
 ANHEUSER-BUSCH, LLC
 P.B. 60, PG 41

N/F
 VA ELEC. &
 POWER CO.
 D.B. 130, PG. 552

50' VIRGINIA
 NATURAL GAS
 EASEMENT
 D.B. 528, PG. 841

N/F
 JAMES CITY COUNTY
 INST. #040007904
 (PLAT)

LOT 1
 88,608 S.F.
 2.0341 AC.

CENTERLINE OF VA
 POWER RIGHT OF WAY
 (UNDEFINED WIDTH)
 D.B. 183, PG. 830

POCAHONTAS TRAIL
 (VARIABLE WIDTH R/W)
 U.S. ROUTE 60

NOTE:
 PER STATE HIGHWAY COMMISSION PLANS APPROVED 12/19/1921
 THE DESIGN WIDTH OF THE U.S. ROUTE 60 R/W ADJACENT TO
 THIS PROPERTY WAS 50'. ROUTE 60 IS SHOWN AS A 50' R/W ON
 P.B. 33, PG. 35 & AS A 50' MINIMUM R/W ON P.B. 81, PG. 85.

LINE	BEARING	DISTANCE
L14	N 74°06'40" W	10.44'

CURVE	RADIUS	ARC	CHORD	CHORD BEARING	DELTA
C6	1,884.86'	609.71'	607.06'	N 35°02'57" W	18°32'02"

SUBDIVISION DETAIL
 (SEE OVERALL PARCEL SHEET 1)

City of Williamsburg & County of James City
 Circuit Court: This PLAT was recorded on
June 23, 2020
 at 12:16 AM/PM, PB PG
 Document # 200009019
 MONA A. FOLEY, CLERK
Mon A Foley, Clerk

AREA TABULATION

PARCEL	OLD AREA	NEW AREA
PIN: 5230100111	3,150,803 S.F. / 72.3325 AC.	3,062,195 S.F. / 70.2984 AC.
LOT 1		88,608 S.F. / 2.0341 AC.

TOTAL AREA = 3,150,803 S.F. / 72.3325 AC.

3 Large/Small Plats Recorded
 herewith as 200009019

