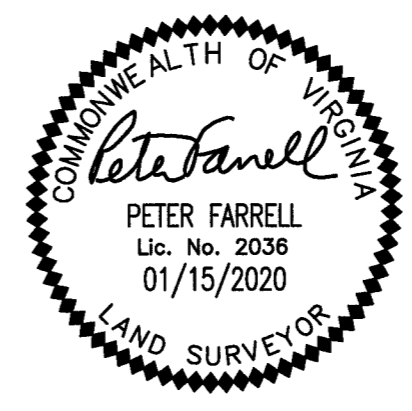


20008424

BOUNDARY LINE EXTINGUISHMENT
 BETWEEN
 LOT 4, LOT 5 AND LOT 7
KNEMEYER-POTTER SUBDIVISION
 STONEHOUSE DISTRICT JAMES CITY COUNTY VIRGINIA
 DATE: 01/15/2020 SCALE: 1"=100' JOB # 17-577

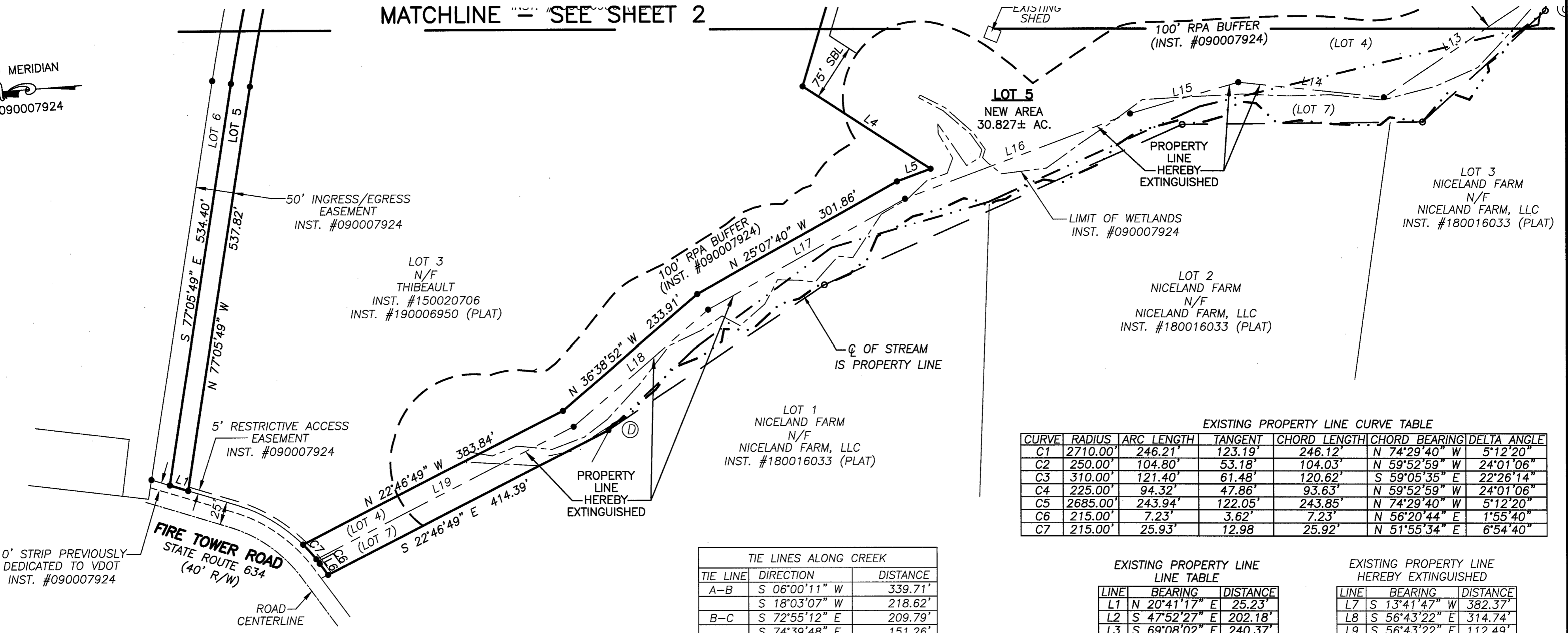


LandTech Resources, Inc.
 Engineering & Surveying Consultants
 205 Bulifants Blvd., Suite E, Williamsburg, Virginia 23188
 Phone: (757) 565-1677 Fax: (757) 565-0782
 web: landtechresources.com

SHEET 3 OF 3
JCC-S-19-0116

MATCHLINE - SEE SHEET 2

RECORD MERIDIAN
 INST. #090007924



EXISTING PROPERTY LINE CURVE TABLE

CURVE	RADIUS	ARC LENGTH	TANGENT	CHORD LENGTH	CHORD BEARING	DELTA ANGLE
C1	2710.00'	246.21'	123.19'	246.12'	N 74°29'40" W	5°12'20"
C2	250.00'	104.80'	53.18'	104.03'	N 59°52'59" W	24°01'06"
C3	310.00'	121.40'	61.48'	120.62'	S 59°05'35" E	22°26'14"
C4	225.00'	94.32'	47.86'	93.63'	N 59°52'59" W	24°01'06"
C5	2685.00'	243.94'	122.05'	243.85'	N 74°29'40" W	5°12'20"
C6	215.00'	7.23'	3.62'	7.23'	N 56°20'44" E	1°55'40"
C7	215.00'	25.93'	12.98'	25.92'	N 51°55'34" E	6°54'40"

TIE LINES ALONG CREEK

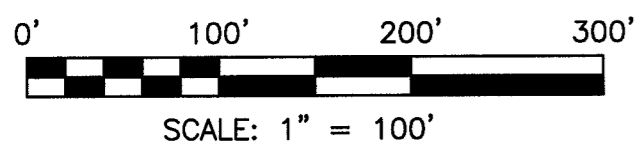
TIE LINE	DIRECTION	DISTANCE
A-B	S 06°00'11" W	339.71'
	S 18°03'07" W	218.62'
B-C	S 72°55'12" E	209.79'
	S 74°39'48" E	151.26'
	S 46°23'05" E	293.88'
	S 78°52'44" E	284.46'
C-D	S 37°55'14" E	218.49'
	S 03°32'57" W	316.54'
	S 19°58'15" E	516.72'
	S 29°36'37" E	342.49'

EXISTING PROPERTY LINE LINE TABLE

LINE	BEARING	DISTANCE
L1	N 20°41'17" E	25.23'
L2	S 47°52'27" E	202.18'
L3	S 69°08'02" E	240.37'
L4	N 37°04'03" E	200.69'
L5	S 16°35'31" E	47.56'
L6	N 57°18'34" E	18.17'

EXISTING PROPERTY LINE HEREBY EXTINGUISHED

LINE	BEARING	DISTANCE
L7	S 13°41'47" W	382.37'
L8	S 56°43'22" E	314.74'
L9	S 56°43'22" E	112.49'
L10	S 77°35'35" E	489.93'
L11	S 39°12'36" W	445.11'
L12	N 79°52'36" W	73.17'
L13	N 29°46'15" W	229.50'
L14	N 10°05'02" E	192.80'
L15	N 12°01'52" W	148.49'
L16	S 16°35'31" W	317.30'
L17	N 25°07'40" W	297.47'
L18	N 36°38'52" W	234.42'
L19	N 22°46'49" W	380.04'



City of Williamsburg & County of James City
 Circuit Court: This PLAT was recorded on
 June 12, 2020
 at 2:29 AM/PM PG
 Document # 20008424
 MONA A. FOLEY, CLERK
 Mona A. Foley, Clerk

3 Large/Small Plat(s) Recorded
 herewith as # 20008424