

CURVE TABLE						
CURVE #	DELTA	RADIUS	LENGTH	TANGENT	CHORD	CHORD BEARING
C1	36°30'24"	132.50'	84.42'	43.70'	83.00'	N83°05'11"E
C2	68°46'14"	63.50'	76.22'	43.46'	71.72'	S80°46'54"E
C3	6°27'53"	500.00'	56.42'	28.24'	56.39'	S43°09'50"E
C4	85°59'35"	50.00'	75.04'	46.62'	68.20'	N20°22'41"W
C5	36°52'12"	50.00'	32.18'	16.67'	31.62'	N44°56'23"W
C6	90°00'00"	25.00'	39.27'	25.00'	35.36'	N18°29'43"E
C7	22°16'59"	208.50'	81.09'	41.06'	80.58'	N74°38'12"E
C8	37°30'23"	243.50'	159.40'	82.67'	156.57'	N67°01'30"E
C9	53°04'04"	63.50'	58.81'	31.71'	56.73'	N74°48'21"E
C10	13°51'06"	243.50'	58.87'	29.58'	58.72'	N78°51'09"E
C11	23°39'17"	243.50'	100.53'	50.99'	99.82'	N60°05'57"E

AREA TABULATION		
	S.F.	AC.
ORIGINAL AREA OF PARCEL A	291,474±	6.691±
TOTAL AREA OF PARCEL B	61,227±	1.405±
TOTAL AREA OF PARCEL A	230,247±	5.286±
TOTAL AREA OF SUBDIVISION	291,474±	6.691±

N/F
REALTEC, INC.
NEW PARCEL A-2
242 FORDS COLONY DRIVE
DOC. #050008866
DOC. #050009649
PID 3130100060

FORD'S COLONY DRIVE
EX. VARIABLE PRIVATE R/W

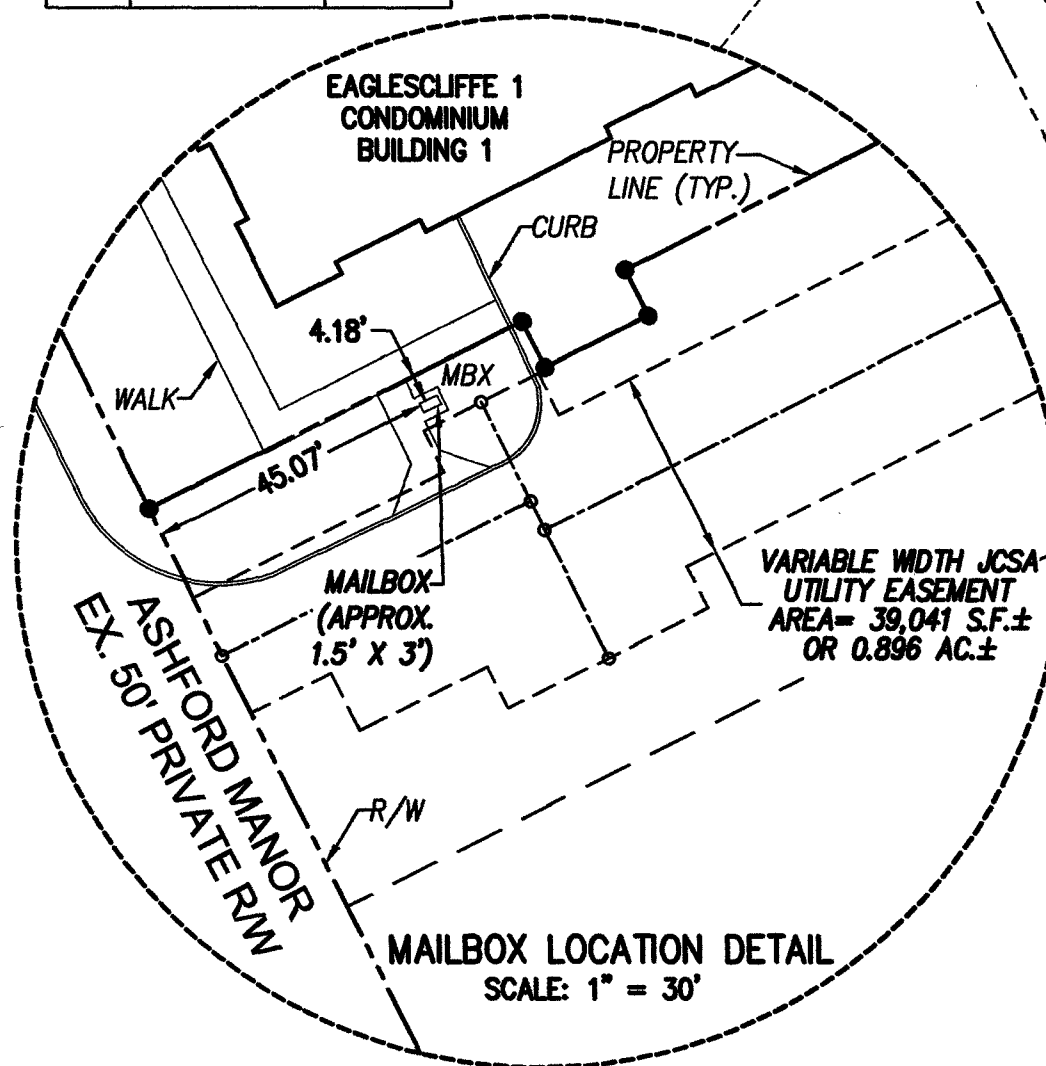
LINE TABLE		
LINE	BEARING	LENGTH
L1	S62°01'00"W	14.53'
L2	S17°01'00"W	21.02'
L3	S62°01'00"W	10.06'
L4	S27°59'00"E	36.64'
L5	N27°59'00"W	14.00'
L6	S62°01'00"W	25.00'
L7	S27°59'00"E	24.00'
L8	S62°01'00"W	26.54'
L9	N27°59'00"W	6.66'
L10	S62°01'00"W	11.00'
L11	S27°59'00"E	6.66'
L12	S62°01'00"W	13.24'
L13	S27°59'00"E	36.44'
L14	S62°01'00"W	22.18'
L15	S63°29'43"W	53.76'
L16	S26°30'17"E	22.20'
L17	S26°30'17"E	5.00'
L18	S26°30'17"E	17.21'
L19	S63°29'39"W	161.28'
L20	S63°30'33"W	13.59'

LINE TABLE		
LINE	BEARING	LENGTH
L21	S26°30'17"E	20.91'
L22	N26°30'17"W	22.20'
L23	S63°29'43"W	101.37'
L24	S63°29'43"W	51.17'
L25	S13°41'57"W	5.85'
L26	S13°41'57"W	10.93'
L27	S76°18'03"E	45.48'
L28	S73°06'16"E	58.08'
L29	S73°06'16"E	2.27'
L30	S73°06'16"E	8.89'
L31	S16°53'44"W	32.36'
L32	N62°01'00"E	39.66'
L33	S27°59'00"E	18.62'
L34	S27°59'00"E	14.00'
L35	N62°01'00"E	73.74'
L36	S18°29'43"W	106.27'
L37	S13°55'41"E	12.16'
L38	S26°30'17"E	76.94'
L39	N62°01'00"E	124.37'
L40	S26°30'17"E	134.95'

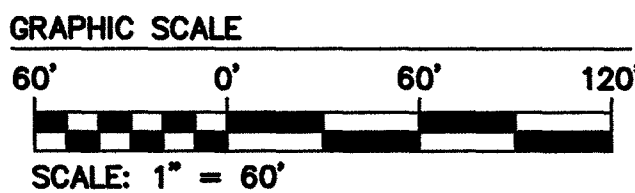
LINE TABLE		
LINE	BEARING	LENGTH
L41	S63°29'43"W	75.00'
L42	S26°30'17"E	29.61'
L43	N63°29'43"E	5.00'
L44	N63°29'43"E	16.25'
L45	S26°30'17"E	99.70'
L46	S49°03'07"W	95.46'
L47	N36°07'20"W	39.28'
L48	S63°29'43"W	78.27'
L49	S26°30'17"E	13.46'
L50	S63°29'43"W	18.00'
L51	N26°30'17"W	13.46'
L52	S63°29'43"W	142.00'
L53	S26°30'17"E	7.96'
L54	S63°29'43"W	18.00'
L55	N26°30'17"W	7.96'
L56	S63°29'43"W	65.04'

EX. 20' JCSA
UTILITY EASEMENT
(DOC. #050009649)
TO BE ABANDONED
IN WHOLE OR IN PART
(UNDER REVIEW)

FORD'S COLONY
SECTION XXXIII
DOC. #050008868
DOC. #050009649



LEGEND
MBX = MAILBOX LOCATION



N/F
RICHARD A. AND LINDA A.
ANDERS (TRUSTEES)
224 ASHFORD MANOR
LOT 1, FORD'S COLONY
SECTION XXXIII
DOC. #160021375

N/F
CLUBCORP NV XY LLC
BLUE HERON COURSE
FAIRWAY #9
PID 372020001B

N/F
MANOR CLUB AT FORDS COLONY
CONDOMINIUM ASSOCIATION
2100 ST. ANDREWS DRIVE
PID 3131100001
DOC. #000003536

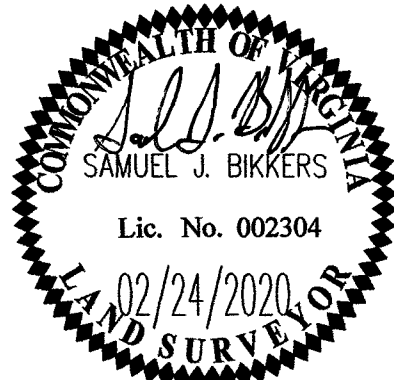
STATE OF VIRGINIA
CITY OF WILLIAMSBURG & COUNTY OF JAMES CITY CIRCUIT COURT.
THIS 4TH DAY OF JUNE, 2020
THE PLAT SHOWN HEREON WAS PRESENTED AND ADMITTED TO
THE RECORD AS THE LAW DIRECTS. 03:36 AM/PM
INSTRUMENT # 20008002

TESTE: MONA A. FOLEY, CLERK
MONA A. FOLEY, CLERK

2 Large/Small Plat(s) Recorded
herewith as # 20008002

S-0003-2018

Rev.	Date	Description	Revised By
3	02/24/20	UPDATED PARCELS	JFS
2	11/21/19	UPDATED PARCEL AREAS	JAG
1	12/21/18	REVISED PER COUNTY COMMENTS	JAG



5248 Olde Towne Road, Suite 1
Williamsburg, Virginia 23188
Phone: (757) 253-0040
Fax: (757) 220-8994
www.aesva.com

Hampton Roads | Central Virginia | Middle Peninsula

PLAT OF SUBDIVISION
PARCEL A
FORD'S COLONY
@ WILLIAMSBURG
OWNED BY REDUS VA HOUSING LLC
POWHATAN DISTRICT JAMES CITY COUNTY VIRGINIA

Project Contacts: SJB/JFS
Project Number: 5652-33C1
Scale: 1"=60'
Date: 12/21/2018
Sheet Number
2 OF 2