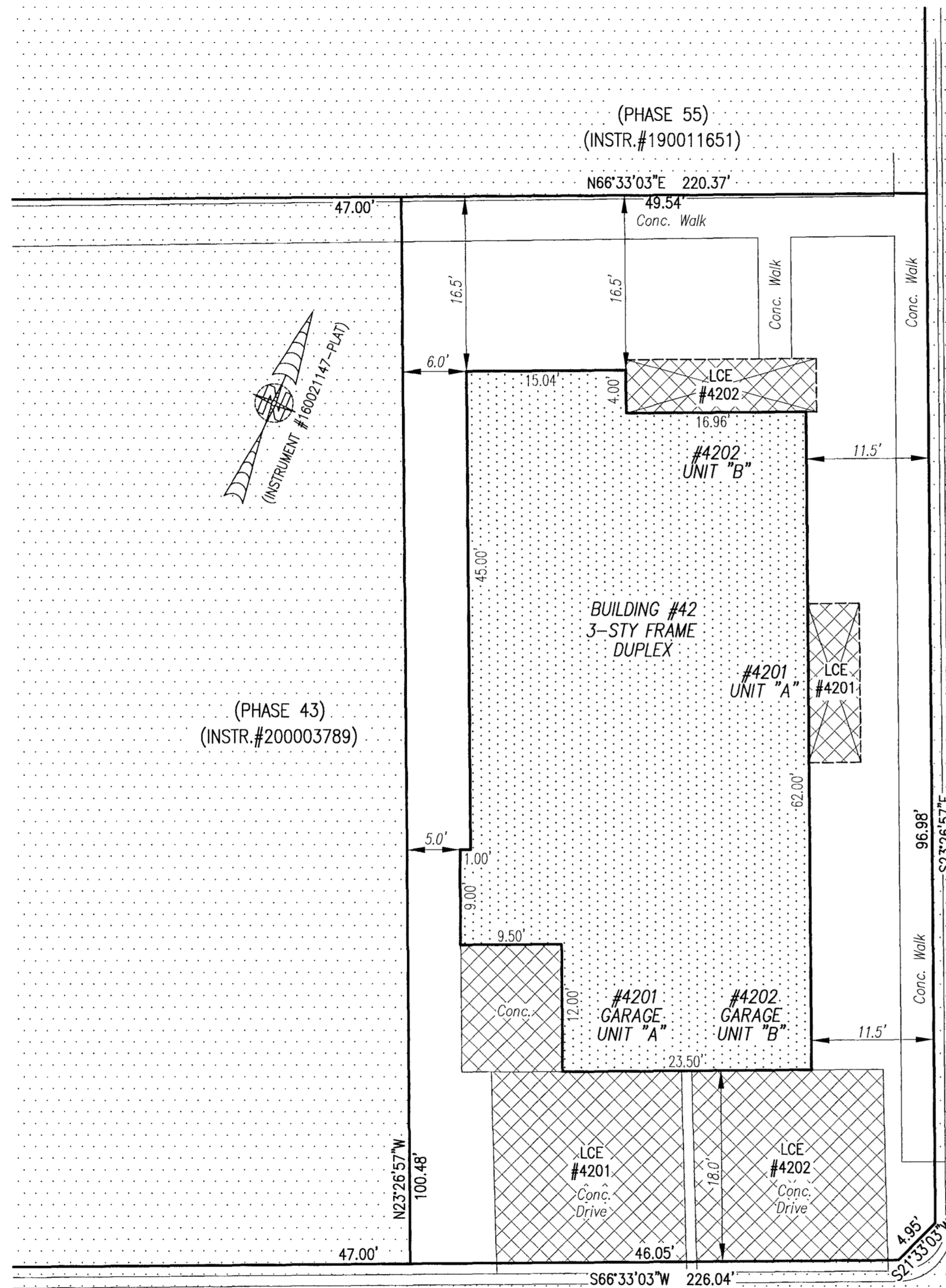
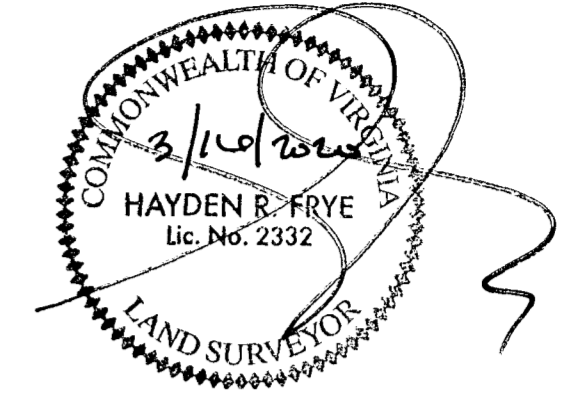


20000489

I HEREBY CERTIFY THAT THIS PLAT IS ACCURATE AND THAT IT COMPLIES WITH THE PROVISIONS OF THE CODE OF VIRGINIA OF 1950 AS AMENDED, § 55.1-1920A & B AND I FURTHER CERTIFY THAT ALL IMPROVEMENTS THEREOF DEPICTED HEREON, PURSUANT TO THE CODE OF VIRGINIA § 55.1-1920A, ARE SUBSTANTIALLY COMPLETE.



- INDICATES PREVIOUSLY SUBMITTED LAND
- INDICATES BUILDING AREA (SEE PLANS FOR UNIT DIMENSIONS)
- INDICATES LIMITED COMMON ELEMENT (LCE) ASSIGNED TO A UNIT # UNIT ASSIGNED
- INDICATES COMMON ELEMENT (EXCLUDING AREAS OUTSIDE SUBMITTED LAND)
- INDICATES ADDITIONAL LAND

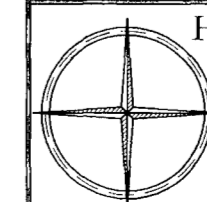
City of Williamsburg & County of James City
 Circuit Court: This PLAT was recorded on
3-27-2020
 at 10:37 AM/PM, PB - PG -
 Document # 20000489
 MONA A. FOLEY, CLERK
Mona A. Foley, Clerk

5 Large/Small Plat(s) Recorded
 herewith as # 20000489

THIS SHEET: BUILDING DETAIL

PHASE 42
CONDOMINIUM PLAT AND PLAN
 OF
THE PROMENADE
 AT
JOHN TYLER
 A CONDOMINIUM
 JAMES CITY COUNTY, VIRGINIA

Jo# 160921



Hayden Frye and Associates, Inc.
Land Surveyors

333 KELLAM ROAD, SUITE 200
 VIRGINIA BEACH, VA, 23462
 PH: (757) 491-7228 FX: (757) 491-7229

DATE: MARCH 7, 2020

SCALE: 1"=10'

SHEET 3 OF 5 THIS PHASE

JCC Subdivision Agent *EF*
 Approval Not Required

