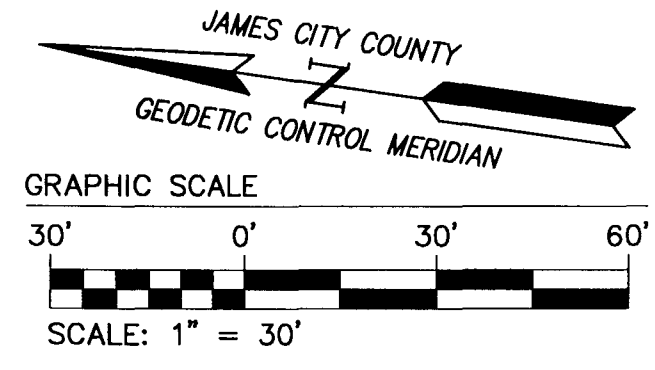
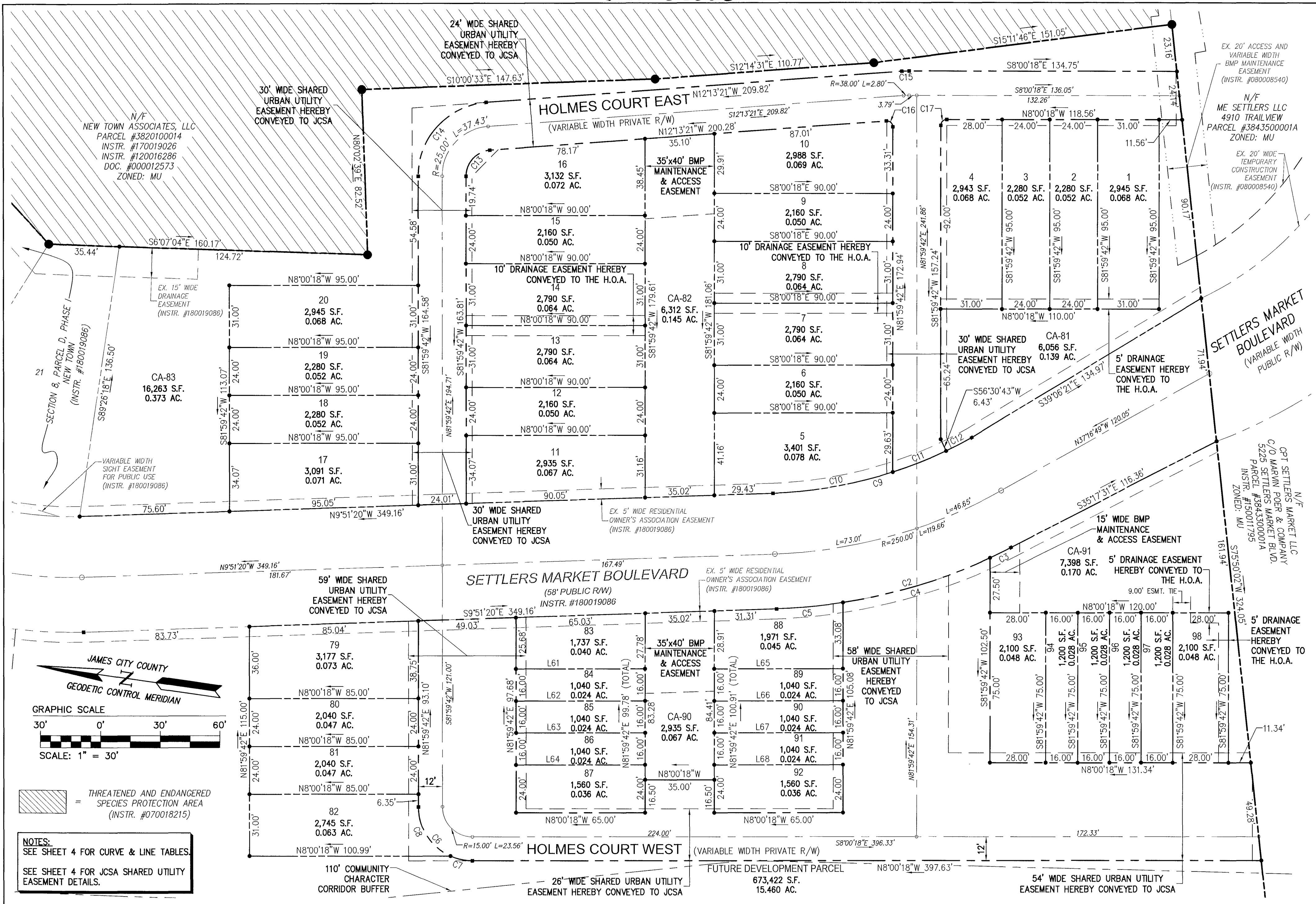


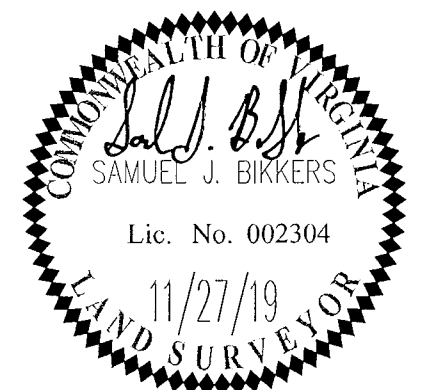
200003850



**NOTES:**  
 SEE SHEET 4 FOR CURVE & LINE TABLES.  
 SEE SHEET 4 FOR JCSA SHARED UTILITY EASEMENT DETAILS.

City of Williamsburg & County of James City  
 Circuit Court: This PLAT was recorded on  
 March 13, 2020  
 at 11:01 AM/PM, PB PG  
 Document # 200003850  
 MONA A. FOLEY, CLERK

4 Large/Small Plat(s) Recorded  
 herewith as # 200003850



5248 Olde Towne Road, Suite 1  
 Williamsburg, Virginia 23188  
 Phone: (757) 253-0040  
 Fax: (757) 220-8994  
 www.aesva.com

PLAT OF SUBDIVISION  
**SECTION 8, PARCEL D, PHASE II**  
**NEW TOWN**  
 LOTS 1-20 AND 79-98, CA-81, CA-82, CA-83,  
 CA-90 AND CA-91  
 OWNED BY ABVA DEVELOPMENT, LP  
 JAMESTOWN DISTRICT JAMES CITY COUNTY VIRGINIA

Project Contacts:	SJB/JAG
Project Number:	6832-08-01
Scale:	1"=30'
Date:	06/17/2019
Sheet Number	3 OF 4