

20003800

City of Williamsburg & County of James City
Circuit Court: This PLAT was recorded on
March 12 2020
at 1:50 PM, PG. 1
Document # 20003800
MONA A. FOLEY, CLERK
Mona A. Foley, Clerk

SUBDIVISION OF
STONEHOUSE TRACT 3
CREATING
**PARCEL "C" &
PARCEL "C" SECTION 1**
LOTS 1 THROUGH 4 & LOTS 10 THROUGH 29
STONEHOUSE DISTRICT JAMES CITY COUNTY VIRGINIA
DATE: 02/05/2020 JOB # 17-378

Large/Small Plat(s) Recorded
herewith as # 20003800

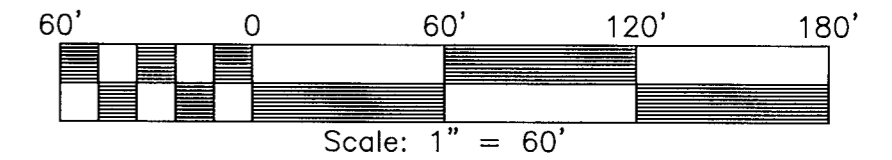
NOTE:
THIS PLAT CREATES 50.840 ACRES OF
OPEN SPACE. ADDITIONAL AREAS OF OPEN
SPACE FALL WITHIN PARCEL "C" FUTURE
DEVELOPMENT AREA AND WILL BE
CREATED BY PLATTING OF FUTURE
SUBDIVISION SECTIONS OF PARCEL "C".

EXISTING ACCESS
& UTILITY EASEMENT
INST. #180020132

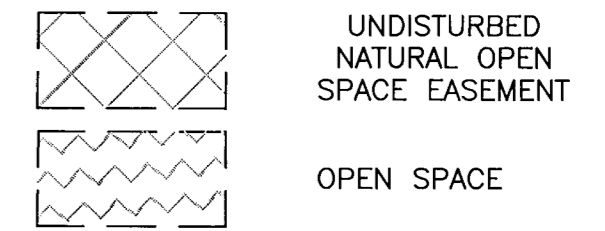
10' X 15'
DRAINAGE EASEMENT

LandTech
Resources, Inc.
Engineering & Surveying Consultants
205 Bulifants Blvd., Suite E, Williamsburg, Virginia 23188
Phone: (757) 565-1677 Fax: (757) 565-0782
web: landtechresources.com
SHEET 5 OF 7

JCC-S-0009-2017

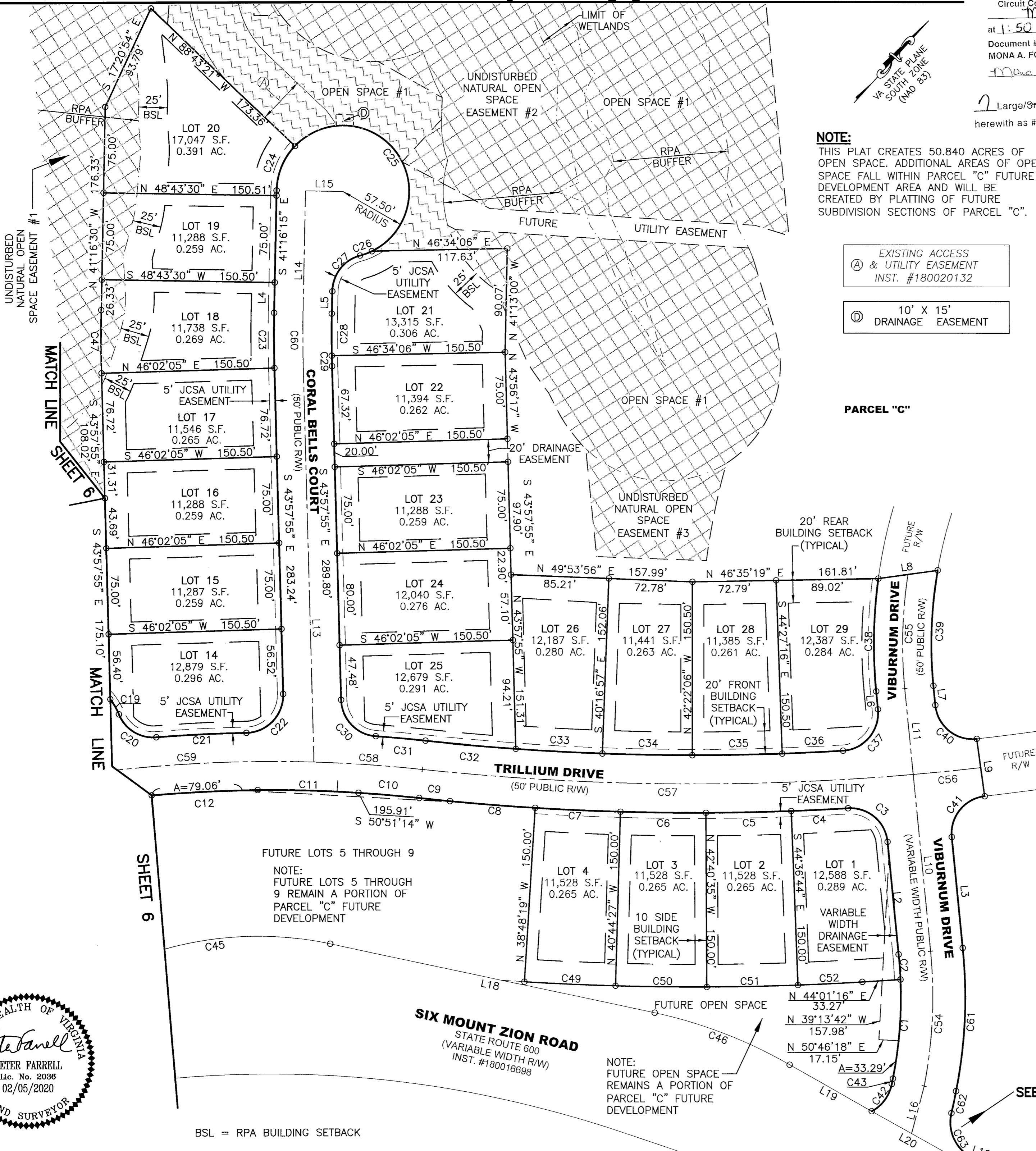
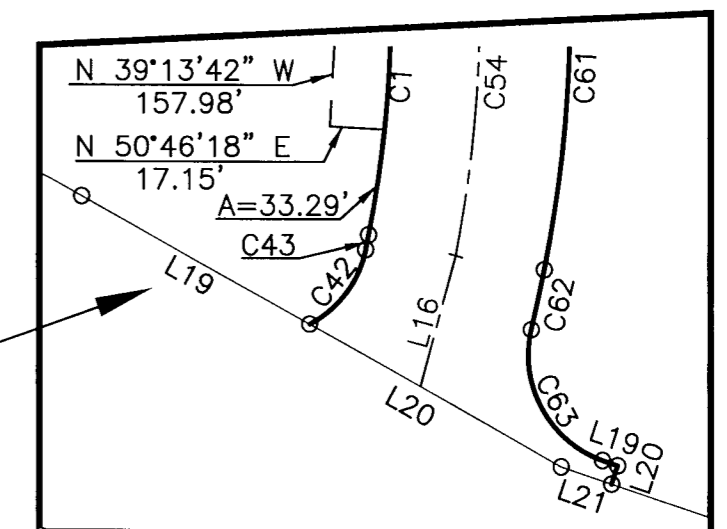


SEE SHEET 6 FOR
SECTION 1
LINE & CURVE TABLES



**PARCEL "C"
SECTION 1
LOT & R/W DETAIL**

NOTE:
THIS PLAT CREATES 48.605 ACRES OF OPEN SPACE. ADDITIONAL
AREAS OF OPEN SPACE FALL WITHIN PARCEL "C" FUTURE
DEVELOPMENT AREA AND WILL BE CREATED BY PLATTING OF
FUTURE SUBDIVISION SECTIONS OF PARCEL "C".



BSL = RPA BUILDING SETBACK

NOTE:
FUTURE OPEN SPACE
REMAINS A PORTION OF
PARCEL "C" FUTURE
DEVELOPMENT

FUTURE LOTS 5 THROUGH 9
NOTE:
FUTURE LOTS 5 THROUGH
9 REMAIN A PORTION OF
PARCEL "C" FUTURE
DEVELOPMENT

SIX MOUNT ZION ROAD
STATE ROUTE 600
(VARIABLE WIDTH R/W)
INST. #180016698