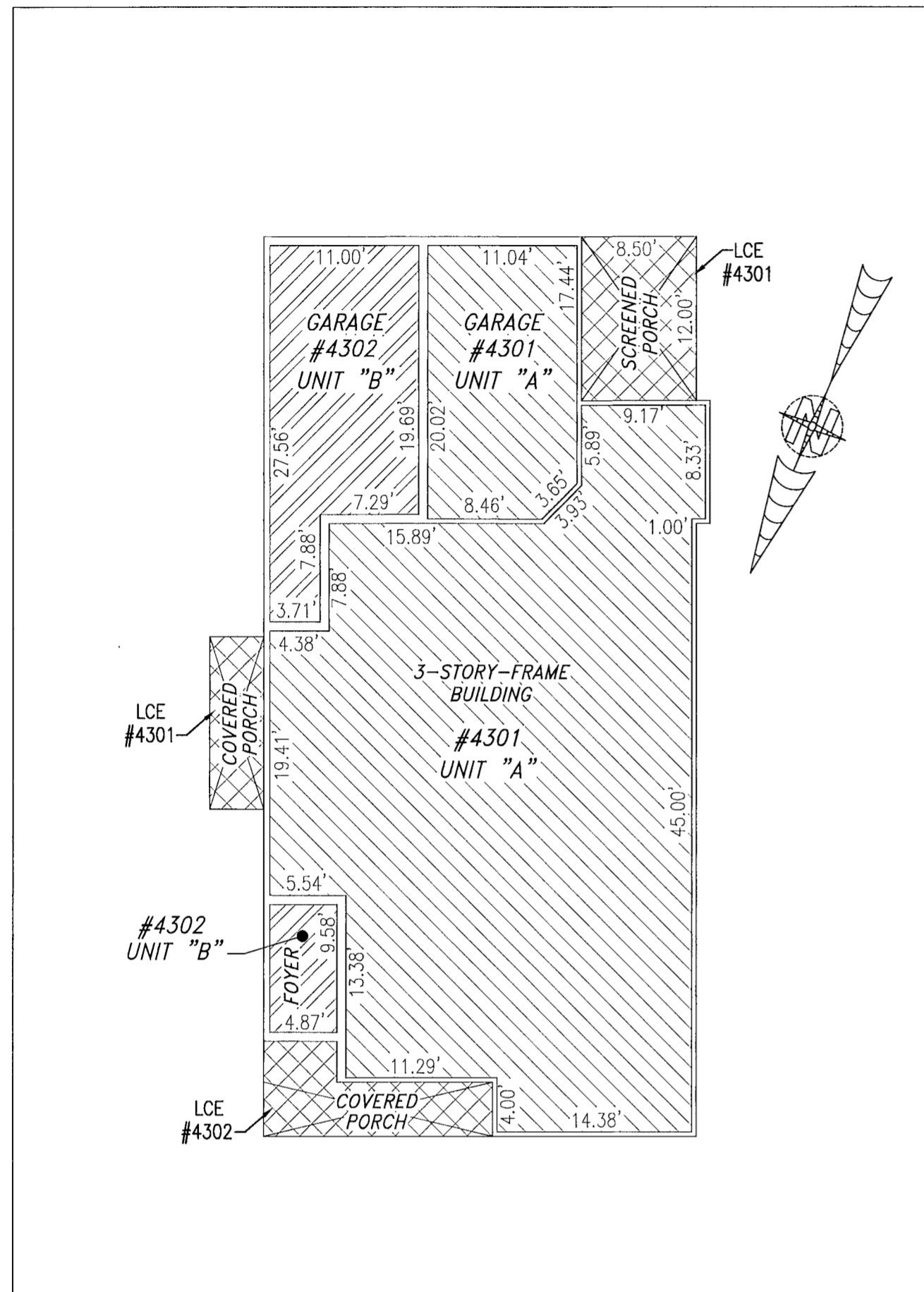
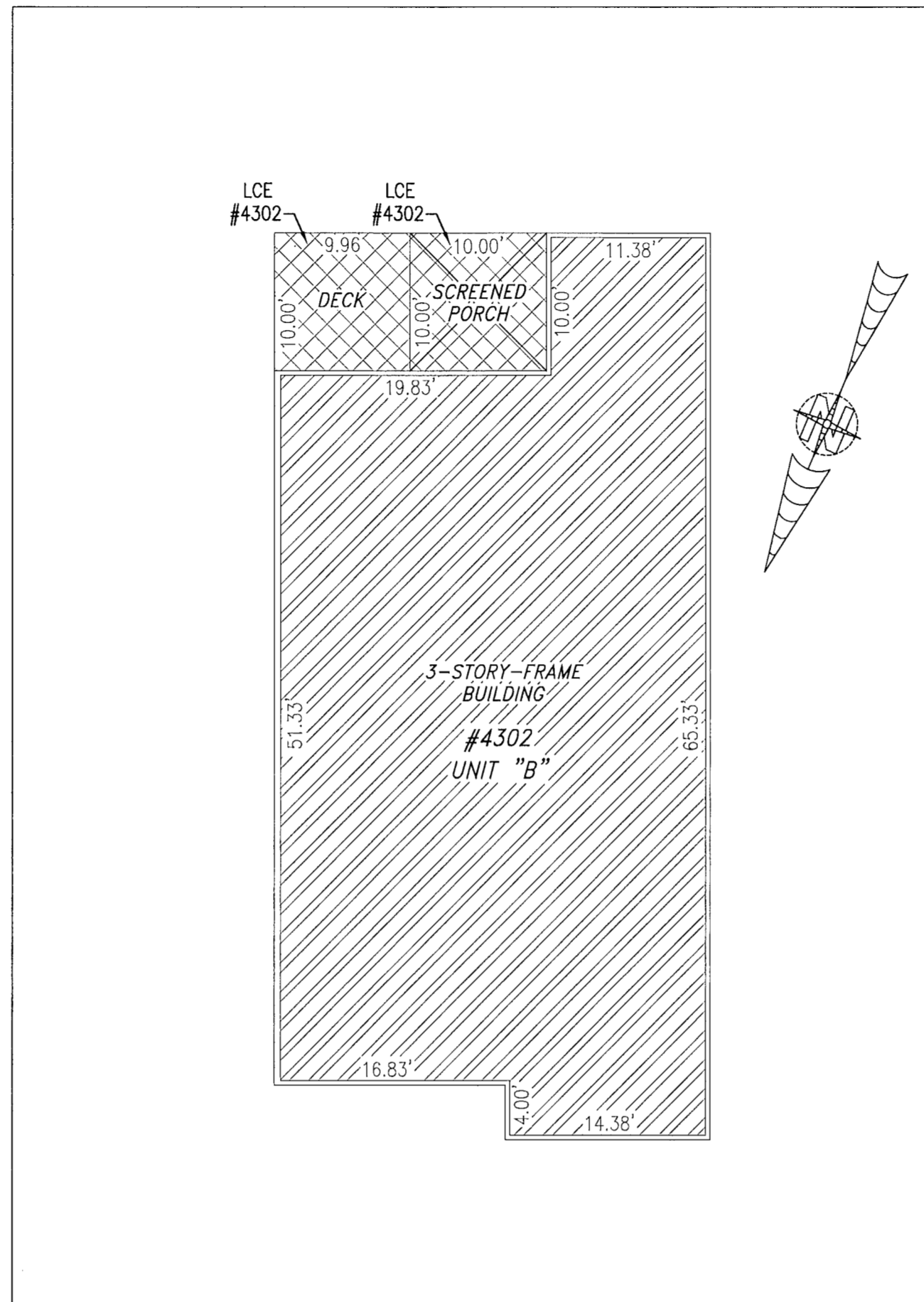


200003789

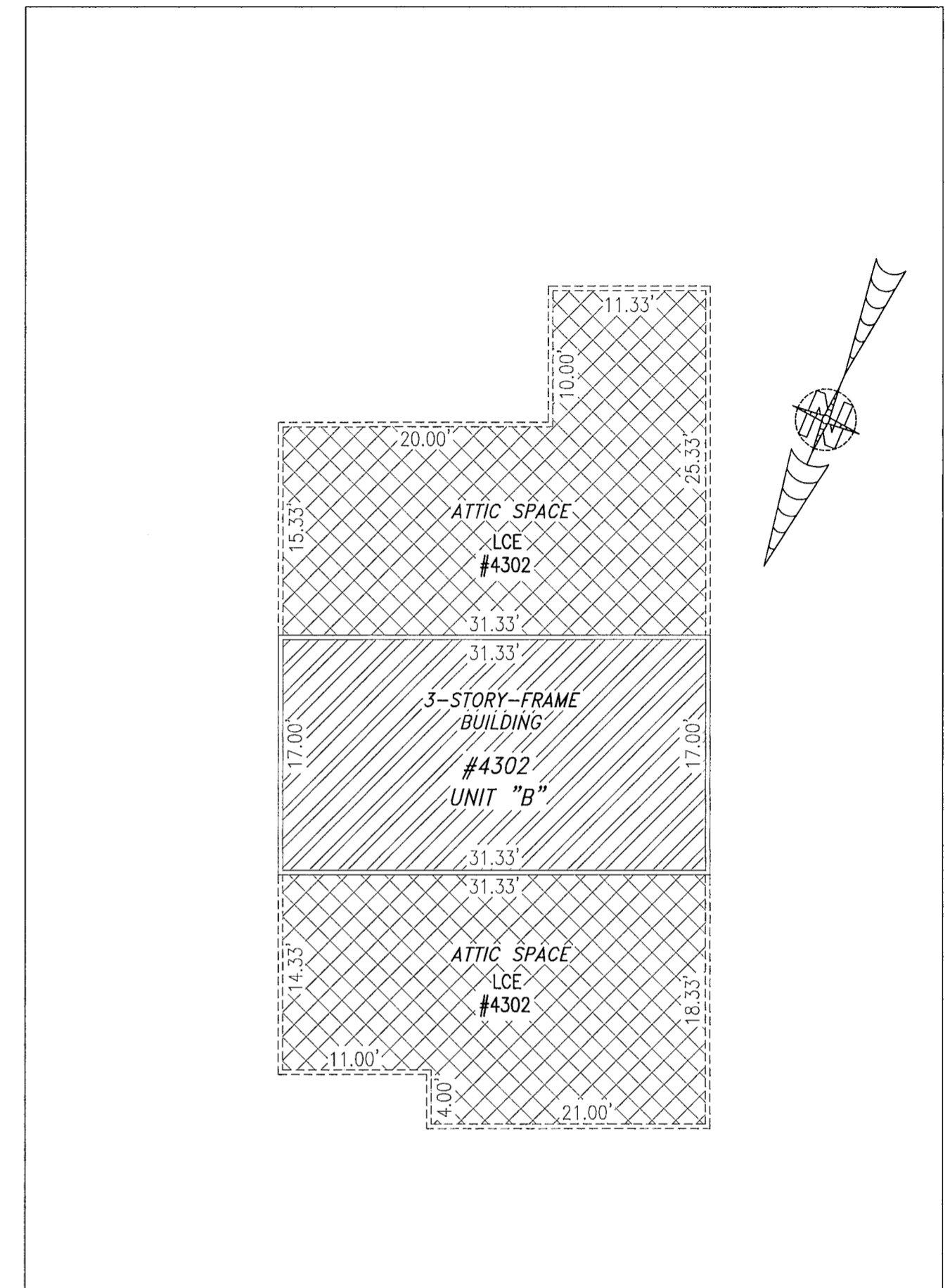
BUILDING 43 (DUPLEX)



FIRST FLOOR



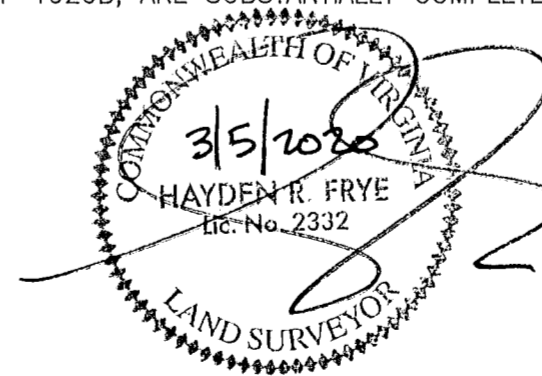
SECOND FLOOR



THIRD FLOOR

UNIT ID	UNIT DESCRIPTION	UNIT ADDRESS
A	-INDICATES AREA OF UNIT 4301	#4301 BALLATA ROAD
B	-INDICATES AREA OF UNIT 4302	#4302 BALLATA ROAD
	-INDICATES COMMON ELEMENT	
	-INDICATES LIMITED COMMON ELEMENT	

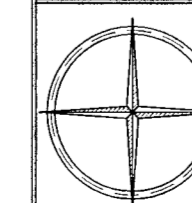
I HEREBY CERTIFY THAT THIS PLAT IS ACCURATE AND THAT IT COMPLIES WITH THE PROVISIONS OF THE CODE OF VIRGINIA OF 1950 AS AMENDED, § 55.1-1920A & B AND I FURTHER CERTIFY THAT ALL IMPROVEMENTS THEREOF DEPICTED HEREON, PURSUANT TO THE CODE OF VIRGINIA § 55.1-1920B, ARE SUBSTANTIALLY COMPLETE.



THIS SHEET: FLOOR PLANS

PHASE 43
 CONDOMINIUM PLAT AND PLAN
 OF
THE PROMENADE
 AT
JOHN TYLER
 A CONDOMINIUM
 JAMES CITY COUNTY, VIRGINIA

Jo# 160921



Hayden Frye and Associates, Inc.
Land Surveyors

333 KELLAM ROAD, SUITE 200
 VIRGINIA BEACH, VA., 23462
 PH: (757) 491-7228 FX: (757) 491-7229

DATE: MARCH 2, 2020

SCALE: 1"=10'

SHEET 5 OF 5 THIS PHASE

City of Williamsburg & County of James City
 Circuit Court: This PLAT was recorded on

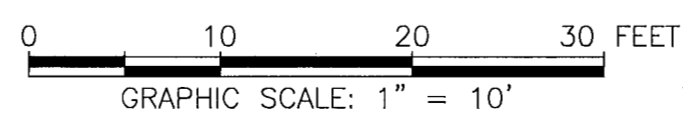
Mar. 12, 2020

at 10:15 AM, PG

Document # 200003789

MONA A. FOLEY, CLERK

Mona A. Foley, Clerk



JCC Subdivision Agent
 Approval Not Required Ebc

5 Large/Small Plat(s) Recorded
 herewith as # 200003789